



ALAMEDA COUNTY  
**COMMUNITY  
FOOD BANK**

P.O. Box 2599, Oakland, CA 94614  
(510) 635-3663 (510) 635-3773 fax  
www.accfb.org info@accfb.org

# Food Drive Resource Guide

## **Alameda County Community Food Bank**

Mailing Address: P.O. Box 2599, Oakland, CA 94614

Street Address: 7900 Edgewater Drive, Oakland, CA 94621

(510) 635-3663  
(510) 635-37739 fax

www.accfb.org info@accfb.org

### **Barrel Pick-up and Delivery Schedule**

**Delivery:** During the week of \_\_\_\_\_ to \_\_\_\_\_  
Please make sure drop-off areas are accessible to our drivers.

**Pick-up:** During the week of \_\_\_\_\_ to \_\_\_\_\_

Please make sure pick-up areas are accessible to our drivers. Consolidate the barrels and have them ready for our drivers on the **first date** of the pick-up range.

**Contact** the Food Drive Coordinator at (510) 635-3663, ext 318 regarding barrel schedule or send an email to [fooddrive@accfb.org](mailto:fooddrive@accfb.org).



ALAMEDA COUNTY  
**COMMUNITY  
FOOD BANK**

P.O. Box 2599, Oakland, CA 94614  
(510) 635-3663 (510) 635-3773 fax  
www.accfb.org info@accfb.org

## Help Make a Difference

Help people in need by hosting a food drive and make a difference in your community. Our Food Drive Program helps individuals, businesses and organizations run successful food drives, while raising awareness about the root causes of poverty and hunger.

## Getting Started

1. **Planning:** Select a coordinator to lead the drive, and appoint team captains to take charge of promotion, kick-off events, and competitions.
2. **Set a Goal:** Aim high! Set a pounds per person goal or fill a certain number of barrels.
3. **Schedule Barrel Deliveries and Pickups:** Call (510) 635-3663, ext. 318 to arrange barrel deliveries and pickups at your location, as needed.

If your barrel(s) become three-quarters full before your scheduled pickup date, call (510) 635-3663, ext. 318.

4. **Volunteer at the Food Bank:** See the results of your food drive, bring a group to work at the Food Bank.

## Double Your Financial Gift to the Food Bank

Participate in your employer's matching gifts program. Contact your human resources department or the Food Bank for more information.

## Promote Your Drive

### Get the Word Out

- Display posters in high traffic areas.
- Publicize the drive in your publications and bulletins.
- Send email messages and make announcements at meetings.
- Have a Food Bank representative make a presentation.
- Distribute food collection bags, flyers and donation envelopes.

### Make it Fun

- Bring a group to volunteer at the Food Bank!
- Build momentum with daily updates on your progress!
- Challenge other departments or competing corporations!
- Hold a kick-off event: Make the admission price a bag of food!

### Create Incentives

- Give prizes or sponsor a party to the department that raises the most food.
- Add fun categories: the most tuna or peanut butter, the most enthusiastic collectors.

**Celebrate Success:** Have a post food drive party and congratulate yourselves on a job well done!

### For more information . . .

Call the Food Drive Program at  
(510) 635-3663, ext. 318  
or email [fooddrive@accfb.org](mailto:fooddrive@accfb.org)

### Office Hours

Monday-Friday, 8:30 am - 5:00 pm



ALAMEDA COUNTY  
**COMMUNITY  
FOOD BANK**

P.O. Box 2599, Oakland, CA 94614  
(510) 635-3663 (510) 635-3773 fax  
www.accfb.org info@accfb.org



## Shopping List

The following is a list of our  
most needed food drive items:

- Canned Fruit & Vegetables
- Canned Meats and Fish
- Peanut Butter
- Pasta
- Beans
- Rice
- Canned Soup
- Dry Cereal and Oatmeal
- Tomato Sauce
- Powdered Milk



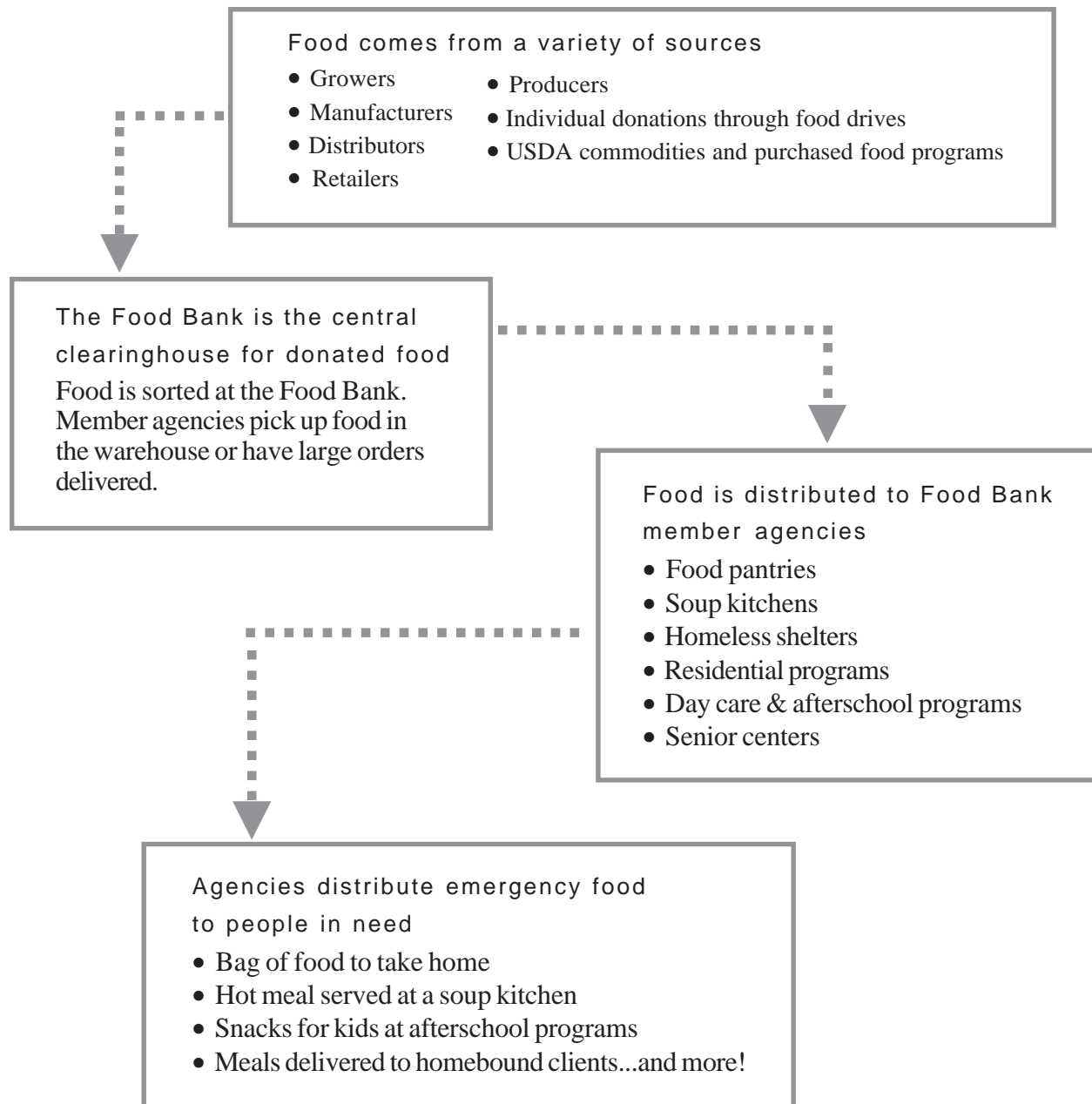
ALAMEDA COUNTY  
**COMMUNITY  
FOOD BANK**



ALAMEDA COUNTY  
**COMMUNITY  
FOOD BANK**

P.O. Box 2599, Oakland, CA 94614  
(510) 635-3663 (510) 635-3773 fax  
www.accfb.org info@accfb.org

## The Flow of Food to People in Need



### Who receives emergency food?

- Working poor families
- Children
- Seniors
- Homeless people
- Survivors of abuse
- People living with life threatening illnesses