



# Annual Report 2009

their story is our story



ALAMEDA COUNTY  
COMMUNITY  
FOOD BANK

## Board of Directors

### Officers

**John Verber**, President  
*Burnham Brown*

**Mike Moye**, Vice President  
*Hanson Bridgett LLP*

**Lydia Tinajero-Deck, M.D.**, Secretary  
*Children's Hospital and Research Center Oakland*

### Members at Large

**Rev. Robert (Bob) Allen**  
*Shiloh Christian Fellowship*

**Tarang Amin**  
*The Clorox Company*

**Anthony Bettencourt**  
*Blinkx, Inc.*

**Anne Cadwell**  
*Kaiser Foundation Health Plan, Inc.*

**Matthew Davis**  
*Port of Oakland*

**Winifred Day**  
*Fine Art By Day*

**Larry P. Ginsburg**  
*Ginsburg Financial Advisors*

**Philip Lewenthal**  
*Safeway, Inc.*

**Sister Marilyn Medau**  
*St. Mary's Community Center*

**Kenneth Porter**  
*Greater New Beginnings*

**Stephen Compagni Portis**  
*Renewable and Appropriate Energy Laboratory,  
UC Berkeley*

**Beth Sawi**  
*Charles Schwab & Co, Inc. (Retired)*

**Suzan Bateson**  
*Executive Director*

*This list reflects board membership and affiliations  
as of June 30, 2009.*

# About the Food Bank

*(July 1, 2008 — June 30, 2009)*

The Alameda County Community Food Bank has been in business since 1985...with a vision toward a day when we can go out of business. As Alameda County's clearinghouse for donated, surplus and purchased food for nonprofit agencies, the Food Bank distributed 16.4 million pounds of food in the 2009 fiscal year – 47% of it (7.6 million pounds) in the form of fresh fruits and vegetables.

Through a network of 275 strategically placed member agencies – food pantries, soup kitchens, child-care centers, senior centers, after-school programs and other community-based organizations – the Food Bank distributed enough food for 246,000 meals weekly (on average) during the fiscal year.

Our systematic approach to alleviating hunger includes:

- One of California's busiest – and most efficient – emergency food helplines
- A multilingual food stamp outreach program that serves as the blueprint for programs across the nation
- Dynamic hunger and nutrition education programs
- An innovative advocacy program that promotes policies to benefit low-income residents

A 501(c)(3) nonprofit organization, the Alameda County Community Food Bank affiliations include Feeding America (formerly America's Second Harvest), California Association of Food Banks and the California Hunger Action Coalition.



**Suzan Bateson**  
Executive Director since 2001



**John Verber**  
President, Board of Directors

*The mission of the Alameda County Community Food Bank is to alleviate hunger by providing nutritious food and nutrition education to people in need, educating the public and promoting public policies that address hunger and its root causes.*

# Distributing Food

**Total: 16,381,599 pounds**  
13% increase



## Farm-Fresh Produce

Since moving into our permanent home in 2005, the Food Bank has ramped up annual distribution of fresh fruits and vegetables from 1,177,979 pounds to 7,633,366 pounds – a 648% increase.

## Emergency Food Box

*(funded by Alameda County)*

In the 2009 fiscal year, 339,500 low-income people received bags or boxes packed with nutritionally balanced food at 37 Food Bank member agency sites – a 16% increase over the previous fiscal year.



## Children's Backpack Program

Curbing weekend hunger among low-income schoolchildren and their families is the aim of this program that doubled (to 16) the number of schools served and increased the amount of food delivered (172,175 pounds) by 80% in the 2009 fiscal year. The Children's Backpack Program serves elementary and middle schools in Oakland, Berkeley and Livermore.



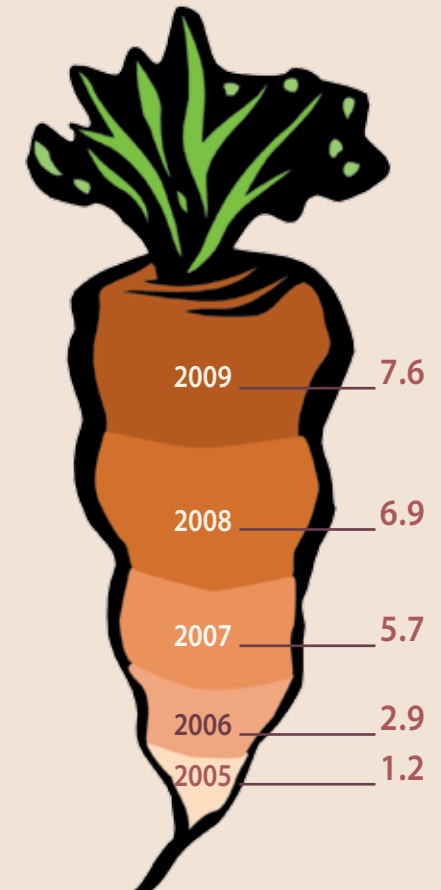
## USDA Government Commodities

After several years of trending downward, the federal government sharply increased the allotment of commodities to food banks. Through the USDA's Emergency Food Assistance Program, the Food Bank distributed 3,054,878 pounds of food – a 75% surge over the 2008 fiscal year.



For the third consecutive year, the Food Bank was awarded Charity Navigator's highest rating – Four Stars – a record of continuity matched by just 11% of nonprofits across the U.S. We achieved this standard by tapping into our vast purchasing network and stretching every \$1 donated into \$7 worth of distributed food.

## Fresh Produce Distribution (in millions of pounds)



# Volunteers: A Call to Action

*"Never doubt that a small group of thoughtful, committed citizens can change the world; indeed, it's the only thing that ever has." -- Margaret Mead*

During a feature interview for the CBS5 newscast, Elizabeth Sanderson, who donated more than 200 hours of volunteer time during the 2009 fiscal year – admitted that her thrice-weekly stints at the Food Bank weren't entirely altruistic. "It really helps me put my own situation in perspective," said Sanderson, an unemployed former marketing director for a major airline carrier. "I've used the time to network and to work through questions – like how much I really need in my life."

All told, 4,476 volunteers (an increase of 19% over the previous fiscal year) contributed 39,157 hours (a 41% increase) assisting with a wide arrange of projects at the Food Bank. Volunteers sorted food, answered calls on the Emergency Food Helpline, worked with our advocacy staff to shape laws that benefit low-income people and assisted with special events and office tasks.



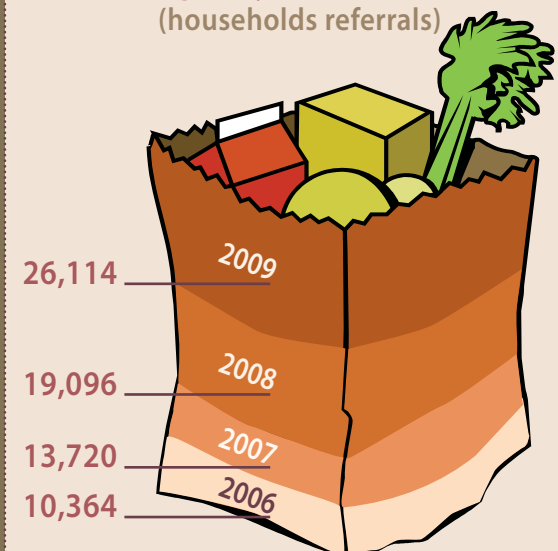
*161 volunteers (including Elizabeth Sanderson) contributed at least 50 hours of service to the Food Bank in the 2009 fiscal year.*

# Emergency Food Helpline

The Food Bank's toll-free Emergency Food Helpline (1-800-870-FOOD) is one of California's most efficient – and busiest – food-referral systems. Since 1994 (a decade after the Food Bank's inception) callers have been relying on the Helpline for a same-day bag or box of food for their entire household...at a location in or near their neighborhood.

In the 2009 fiscal year, the Helpline referred food to 26,114 households (2,177 per month) – a 37% increase over what was a record-breaking fiscal year in 2008. Referrals on the Emergency Food Helpline, which grew incrementally during its first 11 years, doubled between 2007 and 2009.

## Emergency Food Helpline (households referrals)



# Nutrition Education: Knowledge = Health For Life

A core tenet of the Food Bank's mission, nutrition education is critical to the long-term health of the population we serve. In the 2009 fiscal year, the Food Bank's nutrition education staff reached 3,240 children and adults through 156 workshops in a program that instills the value – immediate and long-term – of incorporating whole-grain breads, fruits and vegetables, lean meats, healthy snacking and physical activity into everyday life.

Representatives of the Food Bank's 275 member agencies are empowered to help our 40,000-plus weekly clients make nutritional choices that will decrease their risk of obesity, diabetes, heart disease and other diet-related maladies.

Nutrition education is so integral to the Food Bank's long-term solution to hunger that we are recruiting and training the next generation of messengers through undergraduate internships with UC Berkeley and Cal State East Bay, as well as a graduate-level internship program at UC Berkeley. Interns learn to be effective nutrition teachers/advocates by delivering compelling classroom presentations, writing curriculum and polishing their public-speaking skills.



*A student shows off a cupful of healthy food during a Food Bank nutrition education presentation at Lincoln Elementary in Oakland.*

# The Voice of Hunger is Heard

In September 2008, the Food Bank's Policy & Services team celebrated a major legislative victory as Gov. Arnold Schwarzenegger signed Assembly Bill 433, removing the \$2,000 asset limitation for food stamp recipients. That law, effective in Alameda County on January 1, 2010, eliminates a significant barrier to the Food Stamp Program for an estimated 86,000 Californians – while pumping \$130 million of federal funding into the state's economy. That, in turn, will generate \$240 million in economic activity in California, which ranks last in the nation in food stamp participation.

The Food Bank's aggressive advocacy efforts provide a voice for hundreds of thousands of Alameda County residents who face food insecurity – a voice heard in city halls, county government, Sacramento and in Washington, D.C. In the 2009 fiscal year, the Policy & Services Department organized 68 meetings with legislators, grassroots anti-hunger advocates and other advocacy partners – a 31% increase over the previous fiscal year.



*The Food Bank's anti-hunger advocates meet with California Assemblyman André Swanson at his state capitol office in Sacramento.*

# Food Drive Participants & Corporate Food Donors

## Food Drive Participants

*Due to space limitations, this list reflects the top ten food donors (listed alphabetically) for each food drive during the 2009 fiscal year.*

### Boy Scouts

Bay Area Council of Boy Scouts  
Piedmont Council of Boy Scouts

### General Food Drive

Alta Bates Comprehensive Cancer Center  
Berkeley Bowl  
Christensen Middle School  
Craftsman Home  
Curves  
Edison Elementary School  
Loaves and Fishes Newman Hall  
Oakland Lions Center for the Blind  
Parkmont Elementary School  
Weight Watchers

### High Holy Days Food Drive

Chochmat HaLev  
Congregation Beth El  
Congregation Netivot Shalom  
Congregation Shir Ami  
JCC of the East Bay  
Kehilla Community Synagogue  
Temple Beth Abraham  
Temple Beth Sholom  
Temple Beth Torah  
Temple Sinai

### Holiday Food Drive

3PAR, Inc.  
American High School  
FoodMaxx  
Foothill High School  
Lucky  
Piedmont High School  
Safeway, Inc.  
SCJ Insurance Services  
St. Mary's College High School  
Whole Foods

### Lenten Food Drive

Berkeley Chinese Community Church  
First Unitarian Church of Oakland  
Imani Community Church  
Manor Baptist Church

Our Lady of Grace Church  
Park Blvd. Presbyterian Church  
Prince of Peace Lutheran Church  
St. Christina's Orthodox Church  
St. Mark's Episcopal Church  
Unity of Berkeley

### National Association of Letter Carrier's Food Drive

Berkeley DDU Post Office  
Fremont Irvington Post Office  
Fremont Main Post Office  
Fremont Mission Peak Post Office  
Livermore Post Office  
Piedmont Post Office  
Pleasanton Post Office  
San Lorenzo Post Office  
Union City Main Post Office  
West Grand Avenue Post Office

### School Food Drive

Amador High School  
Donlon Elementary School  
Dublin Elementary  
Head Royce Upper School  
Howard School  
John Muir Middle School  
Millsmont Academy  
Redwood Christian School  
Southgate Elementary School  
Strobridge Elementary School

### Summer Food Drive

Bay Area Sikh Community  
Clif Bar  
Fremont Chamber of Commerce  
Hewlett Packard- Fremont  
Hitachi High Technologies America, Inc.  
Holy Cross Episcopal Church  
Oakland A's  
Robert Half International  
Shah Satnam Ji Green S Welfare  
Force Wing  
Whole Foods

## Corporate Food Donors

*Due to space limitations, only donations of 1,000 pounds or more are listed. However, the Food Bank appreciates all food donations.*

7-UP of San Leandro  
A. G. Ferrari Foods  
Abbott Nutrition (Ross)  
Acme Bread  
Aidell's Sausage Co.  
American Roland Food Corp.  
Anchor Distributing  
Andronico's Markets  
Annabelle Candy  
Armanino Foods  
Atalanta  
Atkins Ranch  
Barilla America Inc.  
Bay Cities Produce  
Becker Lane Organic Farm  
Berkeley Bowl  
Berkeley Farms  
Bush Bros. Co.  
California Cereal Products  
Campbell Soup Company  
Canteen Corp.  
Caravan Trading Co.  
Cargill Foods  
CAW Technology  
Cheesecake Factory  
Clarmil Mfg. Co.  
Clif Bar  
Clorox Technical Center  
Coca-Cola North American  
Columbus Distributing  
ConAgra Foods  
CSW Crandall, Settles & Wingfield  
D & A San Francisco  
Discovery Foods  
Dreisbach Inc.  
DSD Merchandise  
Eden Foods  
Edge Sales & Marketing  
Emkay Food Sales  
Facciola Foodservice Distributors  
Fairn & Swanson Inc.  
Farmland Foods  
Forrest Mushroom Inc.  
Fra' Mani Salumi

Frito-Lay  
Fuji Food Products  
Full Bloom Baking Co.  
General Mills  
Global Commodities Corp.  
Global Merchandisers  
Good Source Solutions  
Grant J. Hunt Co.  
Green Packing Inc.  
Harvest Foods  
Hawaiian Express  
Heitz Trucking  
Hormel Foods Corp.  
IHOP  
In a Nutshell  
Italian Foods Corp.  
Jetro Restaurant Depot  
John Morrell & Co.  
Keebler Co.  
Kellogg Co.  
Kraft Foods  
La Terra Fina USA  
LAD Foodservice Sales  
Leo L. Cotella Co.  
MBM Food Distributors  
Mercado Latino Inc.  
Metropolis Baking Co.  
Mi Rancho Tortilla Factory  
Mission Foods  
Mountain King Potatoes  
Naked Juice Co.  
Nasser Co.  
Native Kjalii Foods  
Natural Formula  
Naturally Fresh  
Nature's Path Foods  
Nestle USA Inc.  
Nordic House  
Numi Tea  
Nutrition Industrial Center  
Orowheat/Entemann's Bakery  
Pacific American Warehouse  
Pacific Cheese Co.

Pacific Coast Container  
Pacific West Marketing  
Paramount Export Co.  
Parker's Crazy Cookies  
Peerless Coffee & Tea  
Peet's Coffee & Tea  
Pepperidge Farm  
Pepsi Cola North  
Perricone Juice Co.  
Phoenician Foods  
Pilgrim's Pride Corp.  
Pioneer Ship Supply  
Prather Ranch Meat Co.  
Prime Time Nutrition  
Procter & Gamble  
Quaker Oats Co.  
Quality Distributing  
Quick & Easy Indian Foods  
R & L Warehouse  
Raybern Quality Foods  
Roma of Northern California  
Roxy Trading Inc.  
Safeway, Inc.  
Sara Lee/Galileo Foods  
Saroni Food Service  
Savory Creations  
Save Mart Supermarkets  
Schaefers Meat & Cold Storage  
Schwan Food Co.  
Seashare  
Seaside Refrigerated Transport  
Semifreddi's Bakery  
Skylar Haley  
Sno Pac Foods Inc.  
Stein Distributing  
Summit/Alta Bates Hospital  
Sysco Food Service of San Francisco  
Tak Yuen  
Target Stores  
Temple Beth Abraham  
Tong Enterprises  
Tropical Food Distributors  
Tropicana Products

# Financial Contributors

Due to space limitations, only donations of \$1,000 or more are listed. However, the Food Bank appreciates donations of any amount. This list does not include contributions made to the Capital Campaign.

## Corporations & Corporate Foundations

### \$100,000 and above

San Francisco Chronicle Season of Sharing Fund

### \$50,000 - \$99,999

Chevron Corporation  
Cisco Systems, Inc.  
Irwin Home Equity Foundation  
Kaiser Permanente NCR  
Community Benefit Programs  
KFOG 104.5 FM

### \$25,000 - \$49,999

FedEx Services  
Goldman Sachs & Co.  
Kraft Foods, Inc.  
Macy's, Inc.  
OSISOFT, LLC

### \$10,000 - \$24,999

AMEC Geomatrix  
Anchin, Block & Anchin LLP  
AT&T  
The Clorox Company Foundation  
Dewey & LeBoeuf LLP  
The GRUBB Company  
Keker & Van Nest LLP  
Novartis Vaccines and Diagnostics, Inc.  
Oracle Corporation  
Pacific Gas and Electric Company  
Royal Coffee, Inc.  
Safeway, Inc.  
Triton Container International Inc.  
Union Bank Foundation  
Union Pacific Foundation  
Wells Fargo

### \$5,000 - \$9,999

California HealthCare Foundation  
Cargill Salt  
Children's Support League of the East Bay  
Clif Bar Family Foundation  
Computers & Structures, Inc.  
Dealey, Renton & Associates Insurance Brokers  
Frantic, Inc.  
Give Something Back Business Products  
Google Matching Gift Program  
Hanson Bridgett LLP  
Insurance Industry Charitable Foundation  
Kazan, McClain, Abrams, Fernandez, Lyons, Greenwood, Harley & Oberman Foundation  
Lam Research Foundation Fund  
Pacific Union GMAC Real Estate  
PricewaterhouseCoopers  
Save Mart Supermarkets  
Sybase, Inc.  
Target  
Taste of the NFL/Hunger Related Events  
UPS  
Wachovia  
Whole Foods Market

### \$2,500 - \$4,999

1st United Services Credit Union  
Adelante Capital Management  
Adobe Systems Inc.  
Alta Bates Medical Group  
Amgen Foundation, Inc.  
Aramark Uniform Services  
Bank of America Charitable Foundation Matching Gifts Program  
Barclays Global Investors Matching Gift Center  
Bio Fuel Systems, Inc.  
Diablo Publications  
Electrical Contractors Trust of

Alameda County  
Fitzgerald Abbott & Beardsley LLP  
Genentech, Inc.  
JPA Landscape & Construction, Inc.  
Kerr & Wagstaffe LLP  
The KPA Group  
Matson Navigation Company, Inc.  
MCC Realty Group, Inc.  
Perforce Software, Inc.  
Powermatic Associates  
Principal Financial Group Foundation, Inc.  
RealNetworks Foundation c/o RealNetworks, Inc.  
Serpico Landscaping Inc.  
Silverman & Light, Inc.  
The Swinerton Foundation  
United Labor Bank  
Urban Village Farmers Market Association  
US Foodservice  
VISA GivingStation

### \$1,000 - \$2,499

Acrylic Art, Inc.  
Alameda County Fair Association  
Alibris, Inc.  
Applied Materials Foundation  
Bank of the West  
Berry & Berry - A Professional Law Corporation  
Boornazian, Jensen & Garthe  
Boyd Brokerage  
CH2M Hill, Inc.  
Chambers and Chambers Wine Merchants  
The Charles Schwab Corporation Employee Matching Gifts Program  
Chevron Lubricants Plant  
Chong Entertainment LLC  
Classic Graphics  
Colliers International  
COMCAST  
The Commerce Group, Inc.  
Commercial Casework Inc.  
Community Economics Inc.  
Cost Plus World Market  
D.W. Nicholson Corp.  
Dublin San Ramon Services District  
eBay Foundation Matching Gifts Program  
Facciola Foodservice Distributors  
Fortifire, Inc.  
Frank Bonetti Plumbing, Inc.  
Furtado, Jaspovice & Simons  
Gebhardt Group  
Great Flag Investment Corporation  
Greater Horizons  
Grosvenor  
Hayward Pipe & Supply  
Internet-Journals, Inc.  
JT2 Integrated Resources  
LeadQual, LLC  
Marchelle Chow King, D.D.S. Inc.  
Mean Well USA, Inc.  
Metaswitch Networks  
The Moody's Foundation Matching Gifts Program  
New Frontiers Software, Inc.  
NORCAL Mutual Insurance Company  
Offhand Designs  
Palo Alto Medical Foundation  
The Pampered Chef, Inc.  
Performance Group of Northern CA  
Polycom, Inc.  
Righellis & Associates  
Robert Half International  
Ross Dress for Less  
The Saul Zaentz Company  
Shartsis Friesse LLP  
StreamlinEvents  
Sun Microsystems Matching Gifts  
Tannahill Realty  
Torone Consulting  
Volterra Semiconductor Corporation  
VRT Insurance Services, Inc.  
Whatever Publishing Inc.  
Yahoo Giving Program

Tyson Foods  
U. S. Cold Storage  
U. S. Foodservice  
U. S. Nutrition Inc.  
Unibic North America  
Unicold Inc.  
Unilever/Best Foods  
Vend Mart  
Vicolo Wholesale  
Vital Vittles Bakery  
Wagner Dist/Golden Empire  
White Toque Inc. West Coast  
White Wave Foods  
Will's Family Favorites  
Wine.com  
Wing Nien Foods  
Ya Ya Imports

# Financial Contributors

## Foundations

### \$100,000 and above

Anonymous  
Walter & Elise Haas Fund  
Charles and Helen Schwab Foundation

### \$50,000 - \$99,999

S. D. Bechtel Jr. Foundation  
The San Francisco Foundation

### \$25,000 - \$49,999

The Annie E. Casey Foundation  
Evelyn & Walter Haas, Jr. Fund  
Koret Foundation  
MAZON: A Jewish Response to Hunger  
The Partnership Foundation  
The Thomas J. Long Foundation  
TOSA Foundation  
Wayne and Gladys Valley Foundation

### \$10,000 - \$24,999

Robert & Lois C. Braddock  
Charitable Foundation  
S.H. Cowell Foundation  
Dreyer's Grand Ice Cream  
Charitable Foundation  
Firedoll Foundation  
The La Fetra Foundation  
Michael E. and Carol S. Levine  
Foundation  
Share Our Strength  
Irene S. Scully Family Foundation  
Tides Foundation

### \$5,000 - \$9,999

Anonymous  
Clarence B. and Joan F. Coleman  
Charitable Foundation  
The Elder Family Foundation  
Hilltop Foundation  
Linnaeus Thomson Fund  
Macy's Foundation  
Martin Family Foundation  
The Morrison & Foerster Foundation  
The Uplands Foundation

### \$2,500 - \$4,999

Banks Family Foundation  
The Danem Foundation  
The Fund  
Hellman Family Foundation  
Thunen Family Foundation  
Jerry J. Wilson Memorial  
Foundation, Inc.

### \$1,000 - \$2,499

Anonymous  
Deupree Family Foundation  
GE Foundation Matching Gifts Program  
Gordon and Betty Moore Foundation  
GRAMP Foundation  
The James Irvine Foundation  
Jiji Foundation  
Macquarie Group Foundation  
McGuire & Hester Foundation  
Mesnikoff Foundation  
Mills Family Foundation  
Nepheli Foundation  
The Smith Foundation  
Sidney Stern Memorial Trust  
Tri-Valley Community Foundation  
Van Loben Sels/RembeRock Foundation  
Y & H Soda Foundation

## Individuals & Family Funds

### \$50,000 - \$99,999

Pete and Amanda Docter  
Beth and David Sawi

### \$25,000 - \$49,999

Anonymous Fund at the East Bay  
Community Foundation  
William Falik and Diana Cohen  
David & Fela Shapell Family Foundation

### \$10,000 - \$24,999

Anonymous  
Anthony Bettencourt and Karin Bunnell  
Cisco Systems, Inc. Employees  
M. Quinn Delaney and Wayne Jordan  
IBM Employee Services Center  
Lon O'Neil and Suzanne Mellard

Contee and Margaret Seely  
Nat Simons and Laura Baxter-Simons

### \$5,000 - \$9,999

Adam and Deidre Abrons  
Henry Abrons and Li-hsia Wang  
Anonymous  
Nancy Barrett  
Bonderson Family Foundation  
John W. Buxton Estate Trust  
Leslie Cahoon  
Charles and Rebecca Conradi  
Creed Erickson III and Mary Erickson  
Paul Erle  
Joel Fajans  
Peter and Elaine Geffen  
Karen Hunt and Phillip Rayher  
Kristina Inman  
Adam and Lisa Klyce  
Leila Lance and L. Sterling Hedgpeth Jr.  
Janet Lord, M.D.  
Dianna Lyons Fund  
John and Janice Markwart  
Masi-Hancock Fund  
Sharie Mendrey  
Mitchell and Lai-Ming Chan Meyer  
Lisa Oberg and Scott Cohen  
John and Beverly Polt  
Krish and Padma Ramakrishnan  
James and Ruth Reynolds  
Kennedy and Kathleen Richardson  
Matthew and Yvonne Rogers  
Matthew and Rachel Scholl  
Howard and Joyce Shao  
Leonard and Sargina Silvani  
Dorothy Simonetti-Guhl  
Jacqueline and Chris Sommers  
Dan Stefek and Amy Stoloff  
Nancy Sweetland  
Jeffrey Sykes and Denise Martini  
Jean-Luc Szpakowski, M.D.  
and Gloria Polanski  
Kong-Meng Tan and May Chen  
Jon Tigar and Carrie Avery  
John and Martha Tuma  
Jennifer Vetter  
Robert and Kathryn Vizas  
Michael Walsh  
William and Denise Watkins

### \$2,500 - \$4,999

Denise Abrams and David  
Harrington Fund  
Barry Adler and Betsy Buchalter Adler  
Anonymous  
AT&T Pioneers Alameda County Council  
Lee Aurich and Helen Hutchison  
Jodie Berger  
David Bickham  
William Butcher and Veronica Roa  
Charles Campe  
The Cavalieri Family  
Richard and Judy Chagnon  
Paul Chernoff  
Brian and Martha Cornell  
Francesca Cunningham and Ann Harvey  
Barbara Dittmann  
Sheila Duignan and Michael Wilkins  
Richard and Sandra Gilbert Family Fund  
Bonnie Goldsmith  
Jeffrey and Allison Gorelick  
The Greenwood Family  
Foundation Fund  
William and Loretta Groth  
Robert Hagerty  
Timothy Ham  
Jeannine Hansen  
Rosemary Henze and Joseph Grieco  
Curtis and Katie Hoffman  
Jennifer Kavar and Marc Derewetzky  
The Kenneth Rebecca Fund  
Michael and Michelle Kourey  
Martin Kupferman  
Germaine LaBerge  
Jacques and Marie Lagarde  
Stephanie Lee  
John Lewis and Marion Murphy-Lewis  
Bonnie Lewkowicz and Paul Church  
Carol Light and Chuck Silverman  
James Livingston  
Barbara MacAuliffe  
Ingrid Maltrud  
Dennis Marino  
Victor and Katalin Markowitz  
David McClain and Marilyn Wong Fund  
Mendelson Family Fund  
Cynthia and David Miller

Marsha Weintraub and Stuart Hellman

Todd Mills and Dung Kim Nguyen  
Barbara Morita-Wake  
Priscilla Myrick and Thomas Cuttillo  
George and Stephanie Ogden  
Timothy Quirk and Donna Peterson  
Elizabeth K. Raymond  
Charles Rice  
Christina Robinson  
George Rochlin  
Martin and Patricia Rosenthal  
Robert and Eileen Ruby  
Raghu Santhanam and Chand Gidwani  
Mark and Kim Serpa  
Rochelle Shapell and Lorne Buchman  
Morgan and Sarah Smith  
Shelby and Vicki Solomon  
Alan and Dolores Steuer  
Stollmeyer Family Fund  
Mark Stump  
Mark and Susan Stutzman  
John and Elouise Sutter  
Jill Suttie and Donald Arbitblit  
Inge Svoboda  
Miye Takagi  
Helga Tarver  
T. S. and Lauren Tate  
Julie Waldman and Alan Germain  
Bruce and Susan Wasserman  
Judith Wofsy, M.D.  
Eric Wogsberg  
Stanley Wulf and Linda Press Wulf  
Saul Zaentz  
Gary Zieses

### \$1,000 - \$2,499

Denny Abrams  
Shoshana Abrass and Douglas Nichols  
Susan Adams  
Wayne Ainsworth and Elizabeth Yagle  
Alice Akawie and Stuart Pivnick  
Dennis and Tracy Albers  
Susan Albert and Bruce Maximov  
The Alfred and Alice Memorial Trust  
Patricia Aljoe  
Jim and Jo Betty Allen  
Jasper Alt  
Lisa Alumkal and Paul Markovitch  
James Anderson, D.D.S. and  
Carol Grimm

# Financial Contributors

Bret Andrews and Nancy Ragle  
Jeffrey Angell and Joan King-Angell  
Anonymous  
Applied Materials Employees  
Mary Arnett  
Catherine Astle  
AT&T Employees  
Raghubir and Kamaljit Atwal  
Matthew and Deborah Au  
Barbara Aumer-Vail and Steve Vail  
Cheryl and Sherman Balch  
John and Denise Barbano  
John and Pamela Bartko  
Suzan and John Bateson  
Charles Baumann  
Suzanne Beahrs  
Behzad and Anita Behtash  
Helen Bell  
Alex and Alice Benedict  
Steven Berger and Paula Hughmanick  
Betsy and Christopher Beros  
Josh and Heidi Bersin  
Paul Bixby and Karen Smalley Bixby  
Gregory Bobrowicz  
John Bongiovanni and Susan Miller  
Hiltrud Booth  
Caroline Booth  
Lisa Borden and Karl Haas  
Severin Borenstein and  
Margaret Stewart  
John and Lynn Bosche  
Lloyd and Patricia Bracewell  
C. Michael and Gerri Bradley  
Linda Braly  
John and Jean Brennan  
Gretchen Brosius  
Kathryn Broughton and Mark Martin  
Gregory and Teryl Brown  
Mildred Brown and Robert Salmons  
Thomas Brumfield and Carole Herman  
Paul and Jeanette Brunet  
Sandra Bugna and Paul Erle  
Christa Burgoyne  
Richard and Jackie Joy Burke  
Neil and Mary Burmester  
Tobe Burnstein and Shelley  
Burnstein Peck  
Fredrick and Drusilla Burrell  
Anne and James Cadwell

John and Nancy Callahan  
Kevin and Natalie Campbell  
Lisa Carlin  
Charles and Gretchen Carlson  
S. Davis Carniglia and Mary Claire Baker  
Terry Carroll and Linda Dardarian  
Tim and Sylvia Carter  
Cecil Carthen  
Toni and Santiago Casal  
Craig and Letitia Casebeer  
Adam Cash and Erica Cleary  
Mary Castagnozzi and Philip Bush  
Katherine Chaitin  
Sheung Chan  
Alfonso and Lydia Chan  
Lionel and Lorraine Chan  
Terisa Chaw and James Hendriksen  
Ann Chihak Poff and Curt Poff  
Mary Chin  
Michael Choy and Shannon Moffett  
Susan and Ronald Choy  
Laura Clark  
R. C. and Julia Clements  
Alisa Clemmons  
Tom and Joyce Coffland  
Robert and Ingrid Cole  
Robert Cole  
Keith Collins  
Sachu Constantine and  
Suzanne Delbanco  
Julian Cortella  
Daniel Corvello  
Scott Corvin  
Harold Cottman III  
County of Alameda Employees  
Lance Crain  
Kimball and Kazumi Cranney  
Peter and Diana Crook  
James Crook and David Harbison  
Melanie Crotty  
Molly Crowley  
Ericka Curls-Bartling and  
Aron D. Bartling  
Deborah Dagang and Terry and  
Brendan Klim  
Sayed and Elise Darwish  
Gerald and Rosalind Davenport  
Elizabeth and William Davis  
Thomas Davis

Lois Dawers  
Christine Dawson  
Leonard De Somma and Family  
Gail Fuller  
Marvin and Kelly Deal  
Mary Jane Dean  
Kay Debs, Ph.D.  
Edward and Kathy Deenihan  
Cornelia Dekker  
Kyn Dellinger Paganello  
William E. Delphey  
Emily and Jamel Demir  
Barbara Dengler  
Deupree Family Foundation  
Jenifer Dever  
Nicholas deVries  
Connie Dias and Donald Parkin  
Debora Dittmar  
Kurt Doelling  
Rick and Kathy Doering  
Kathleen and Eamonn Dolan  
Robert and Maureen Dompe  
Martin Dreyfuss  
Robert Driver  
Richard Duran Jr. and Roberta Duran  
Teresa Eade and Steve Lautze  
Jeffrey and Cynthia Earl  
eBay Employees  
Janine Egert  
David and Karen Eichler  
Robin Einhorn  
Gerald and Gail Eiselman  
Steven Ellson and Susan Maruccci  
Paula and Steve Evangelou  
Jeff and Katherine Everett  
Benedict and Mary Feinberg  
Lester and Andrea Feldman  
Frank Fernandez and Carmen  
Flores Fund  
Linda Fiedler  
Christine Fierro  
Keith Fitzgerald  
Michael and Sally Fitzhugh  
Larisa Flint Snyder  
Jean Follette and Adam Olivieri  
Colleen Fong and Carl Stempel  
Marilyn Ford  
Sean and Penny Fottrell  
Alan and Patricia Francis-Lyon  
Kathryn Frank and James Blume

Fratellanza Men's Social Club  
Abe and Jennifer Friedman  
Gail Fuller  
Aaron Garnett  
Stephen Garry  
Kenneth and Roxanne Gault  
Jennifer Gautier and Neil Bason  
Nan Gefen  
Judy Geiselman  
Genentech Employees  
Mimi Gersten Gohlke  
James Geselbracht and  
Jeanne Dunn Geselbracht  
Eric and Emma Gimon  
Larry Ginsburg and Hanna Levenson  
Stephen and Marian Gold  
Beth Goldberg and J. Cogan  
Susan Goltsman and Daniel Iacofono  
Jan Goodman  
Michael Gordon  
Kimberly and Kenneth Gott  
Jane Gottesman and Geoffrey Biddle  
Ellen Greenberg  
Leisl Griffith Redmond  
Richard and Janet Grossman  
Elmer and Pam Grossman  
Natalie Gubb and David Arpi  
Basil Guy  
Jennifer and Nikhil Haas-Dehejia Fund  
Marvin and Birgit Hahn  
Patricia and Jerry Hamilton  
Heather Hanly and Daniel Purcell  
Bernice Hansen  
Thomas Hargrave  
Matthew Harren  
Mark and Melony Harris  
Beverly Harris  
Douglas and Eugenie Hawkins  
Terri Hearsh  
Daniel Heinrich  
Jeffrey Heller and Debra Stein  
Kristi Helmecke and Philip Hunsucker  
Mary Henderson  
Robert and Alva Herr  
Cheree Hethershaw  
Bruce D. Hill  
Barry Himmelstein  
The Peter and Mary Hinton Family Trust  
Lawrence Hobel and Diana Staring

Neal Hoellwarth  
Hoshang Hormasji  
Joseph Houser  
Tiffany Howell  
Huey-Ming and Susan Hsu  
Gayl Huston and Ralph Pais  
Thomas Jacobs and  
Connie Hartquist Jacobs  
Sarah Jaffe  
Naveen and Erin Jain  
Karen Jandorf  
George W. Jaquette  
Jing Family Fund  
Dwight Johnson and Catherine Sylvia  
Russell Johnson  
Alex Johnston  
Lynne Jones and Roger Baxter  
Thomas Jones III and Elisabeth Jones  
Jeffrey Greeve and Janis Kahn  
Kristine Kaiser and Steven Schiller  
Meredith Kaplan  
The Kaplan Family  
Joanne and Scott Karchmer  
Susan Kegeles and Jeffrey Lazarus, III  
Christopher Kelley and Liane Randolph  
John and Elizabeth Kendall  
Maureen Kennedy and Konrad Alt  
J. Patrick and Patricia Kennedy  
Gurubhai and Guru Khalsa  
Kiang Family Fund  
Timothy and Elizabeth Kientzle  
Henry and Jodi Kingdon  
James Kloetzly and Sonia  
Zulpo-Kloetzly  
Theo and Lucienne Klopfer  
Greg and Starla Knapp  
Todd Kummer  
Susan Kupfer  
Lorene Lamb  
Marianne Laouri  
Lauren LaPietra and Matthew Williams  
Glenn and Elaine LaPlante  
Corey and Rita Largman  
Karen Larsen  
Patricia Lau  
Blake Lawit  
James and Mary LeBlanc  
Anne LeBlanc  
Caron Lee

# Financial Contributors

Erik Lee and Kristen Cashmore  
Theresa Lee and Frederick Lass  
Eric Leenson and Monica  
Marini-Leenson  
Arthur Leffel  
John and Lois Lemire  
Thomas and Yen Lenk  
Daniel and Victoria Leonardi  
Peter E. Lester and Ann Ludwig  
Mark and Lisa Levine  
Ronnen and Lionel Levinson  
Harold and Joan Lewis  
Darrell Smith and Elaine Lew-Smith  
Martin and Charlotte Lichterman  
Lockheed Martin Employees  
Michael and Mary Lubin  
Sean Lydon  
Paul S. Mackey and  
Linda Webster-Mackey  
Macy's West Employees  
Barbara Madley  
Daniel and Robinn Magid  
Laurence Malone  
Roger and Joan Mann  
Thomas Mann  
Peter G. Manoleas  
Mary Mara  
Cheech Marin  
Saul and Julia Marquez  
Benjamin and Mary Martinez  
Doris Marx  
Lucy Marx  
Richard Masterson and Debra Dove  
Robert Mathews  
Margaret Mathias  
Laura D. Mattos  
Peggy Maurer  
Michael May  
Michael and Carol Mayer  
Thomas and Dorothy Mayer  
Lucy McCoy and Larry Riley  
Michael McGuire and Cynthia Morton  
Donald and Judith Ann McMorrow  
Karen McNamara  
Malcolm and Sandra McNeil  
Kathleen Meagher  
Daniel Melvin  
Jeffrey Merrill  
Robert Michna and Jodi Smith

Richard and Marlene Millikan  
Kenneth and Janice Milnes  
Mark Mitchell  
Marianne Mitosinka and George Wick  
Stephen Moehle  
William P. and Maureen L. Molmen  
Lewis Moore  
Rand Morimoto  
Kris L. Morrow  
Thomas and Jo Ann Moseley  
William and Martha Moses  
Myron Moyer  
Ellen Moyer  
Leon Muraro and  
Martha Webber Muraro  
Emmett Murphy  
Carolyn Murphy  
William Murphy  
James and Lindsey Murray  
Sylvia Murray  
Narendran Nachiappan  
John and Barbara Nagle  
Todd and Yoko Narter  
Joe and Carol Neil  
Peter Newman  
Shaquana Newsom  
Mark and Carol Norberg  
Christopher Nuuja and Jodene Isaacs  
John Oldham  
Peter Ormond  
Kathy O'Sullivan and Maurice Krumrey  
Pacific Union Real Estate Agents  
Robin Packer and Shelley Klop  
Allan Padgett  
Kevin and Nancy Padian  
Steven and Cherie Jo Patenaude  
Jason Pederson  
Lorraine Pehoushek  
Edward Penhoet and Camille  
Stahl-Penhoet  
Harlan Penn  
Peter F. Pervere and Georgia Cassel  
Craig and Caroline Peterson  
Pacific Gas & Electric Employees  
Leo Pigozzi, Jr.  
Morgan Pike and Lori Ann Pettegrew  
Karen Plessinger  
Cheryl and Lee Pochapin  
Christopher and Karen Pohl

Michael Pollan and Judith Belzer  
Eric and Susan Poncelet  
Kristine Poplawski  
Scipio and Barbara Porter  
Warren and Jane Pottebaum  
Kenneth Preston  
Balaram Puligandla and Linda Okahara  
Charles Ramsden  
Cheryl Randolph  
Will and Marilyn Rayment  
Kathleen Reeves  
Kenneth and Frances Reid  
The Robert Rendon Anthony  
Memorial Fund  
Scott and Kathleen Revak  
Jason and Melissa Richardson  
Mary Ellen Richey  
Rachel Richman and Jim Chanin  
Elizabeth Riehle and Shannon Gray  
Marie Riehle and Daniel Altemus  
David and Carla Riemer  
George and JoAnne Robb  
Paul Robinson  
Gregory J. Rockwell Trust  
Meg-Monique Roe and Thomas Gregory  
S. E. Rogers  
Ursula Rolfe and Monroe Strickberger  
Anne Ronan  
Gary Roof and Douglas Light  
Seth and Margaret Rosen  
The Rosengarten-Horowitz Fund  
Marcie Rubel and Michael Rufo  
Elizabeth Ruhland  
Peter Rukin and Sharon Djemal  
Douglas and Julie Rusch  
Kenneth Russett  
Francis Ryan and Judith Levitan  
Thomas Sager and Eugenie Scott  
Paul and Linda Salsgiver, Jr.  
Jonathan and Kristine Sandoe  
Joan Sarnat and David Hoffman  
Craig Sato  
Kenneth and Marjorie Sauer  
John Scerbak and Deborah Maxwell  
Holly Scheider and Daniel Feinberg  
Ed and Mary Ann Scheuer  
Philip and Shirley Schild  
Mary Schoen and Carlos Perez  
Anita Schriver

Andrew Schwarz  
Mark and Susan Schynert  
Louise Sefton and Arlyn Johns  
Gordon Seligson and David White  
Martha Sellers and Luigi Semenzato  
Dagmar and Gilbert Serota  
J. Merrill and Patricia Shanks  
Arthur and Mary Shartsis  
Chi-Kwan Shea  
William and Solveig Shearer  
Ann Shenkin  
Yaniv and Shawna Sherman  
Katie Sidney-Sanchez  
Jon and Margaret Sigurdson  
Franklin and Elizabeth Silver  
Helene Silverberg and Victoria Kahn  
Richard Simons and  
Cynthia Vrilakas Simons  
M. Lynn Simonson  
Gail Simpson and David Roberts  
Keith Skinner and Christine Williams  
Cherida Smith  
Steven and Sandra Smith  
Lawrence Smyth, Jr. and  
Phillippa Smyth  
Pamela Sogge and Richard Jonasses  
Doug Byles and Meri Soll  
Mark Sommers  
Robert and Ann Spears  
Mary Stephens  
John and Romer Stevenson  
Nancy Storch  
David Stranz and Lina Au  
Silvia Stress  
Susan Stull and John Houghton  
Michael and Sylvie Sullivan  
Claudette Surma  
Anna Sussman and Jonathan Jones  
Thomas and Ines Swaney  
Eugene and Ellen Switkes  
Gina Tega and Ali Partovi  
Jay and Helen Tepperman  
Samuel Test  
James and Elizabeth Thomas  
Barrie Thorne  
Michael and Jeanne Tierney  
Matilda and Neil Toda  
Denny and Maria Tompkins  
Rebecca Toporek

Brian Torone  
Ama Torrance  
Ram and Vara Trikutam  
Herman Trutner  
James Tyler  
Michael Ubell and Paula Hawthorn  
Carole Ungvarsky and  
Christopher Killian  
Marilyn Vaught  
Tod and Jennifer Vedock  
John and Delia Verber  
Cecilia Vitug  
Julia Voorhies  
Yvonne Wade  
Jonathan Walker  
Michael and Marsha Walsh  
Susan Ward  
Zack Wasserman and Meg Zweiback  
Anne Waters and Stephen Buffi  
Arloine N. Webber  
Christopher Wee and Pohfoong Ngau  
Leonard Weiler and Alice Collins  
Anne Weills and Daniel Siegel  
Jed Weissberg and Shelley Roth  
Brian Welsch  
Charles and Annelle Westbrook  
Searle Whitney  
Erik Wiener  
Andrew and Billie Wiesenthal  
Joel and Elizabeth Willard  
Craig Williams and Eileen Keller, Ph.D.  
L. David Williams  
Andrew and Janet Wilson  
Nance Wilson and Clifton Schor  
Martha Winnacker  
The Winokur Family  
Priscilla Sue Winslow  
Jeff Witt  
Charles and Nancy Wolfram  
Franklin and Catherine Yap  
Derek and Jill Yegian  
Tony Yeh  
Robert Youngs and Susan Cohen  
Lily Yu and Kian-Huat Lim  
Erick Yu  
Ari and Rochelle Zak  
Erin and Mavrik Zavarin  
Janet Ziegler  
Olivier Zyngier

# Financial Statements

## Statement of Financial Position

June 30, 2009

### Assets

Cash and marketable securities	\$4,567,037
Grants receivable	62,928
Shared maintenance & other receivables	298,079
Pledges receivable	354,847
Inventory (Note 1)	832,727
Prepaid expenses and deposits	104,538
Property and equipment, net	7,958,124
<b>Total Assets</b>	<b>\$14,178,280</b>

### Liabilities and Net Assets

#### Liabilities

Accounts payable	\$152,734
Accrued wages and payroll taxes	95,251
Accrued compensated absences	142,549
Deferred revenue	236,139
<b>Total Liabilities</b>	<b>\$626,673</b>

#### Net Assets

Unrestricted	\$13,433,622
Temporarily restricted	117,985
<b>Total Net Assets</b>	<b>\$13,551,607</b>
<b>Total Liabilities and Net Assets</b>	<b>\$14,178,280</b>

#### Change in Net Assets

Change in net assets operating	\$1,374,667
Capital Campaign, net	354,350
Unrealized loss on investments	(70,083)
Net temporarily restricted revenue	(54,601)
Net assets, beginning of year	11,947,274
Net assets, end of year	\$13,551,607

**Note 1:** Feeding America, the national food bank network, valued donated food commodities at \$1.58 per pound for 2009.

## Statement of Operating Activities

For the year ended June 30, 2009

### Annual Support and Revenue

Federal Emergency Management Agency	\$101,967
State of California	467,431
County of Alameda	1,055,172
Cities of Oakland, Hayward and other	126,980
Foundation and corporate giving	2,812,566
Individual contributions	3,693,785
Food handling charges	183,011
Food purchase revenue	224,227
Interest and other	301,537
Donated commodities (Note 2)	17,206,492
<b>Total Support and Revenue</b>	<b>\$26,173,168</b>

### Annual Operating Expenses

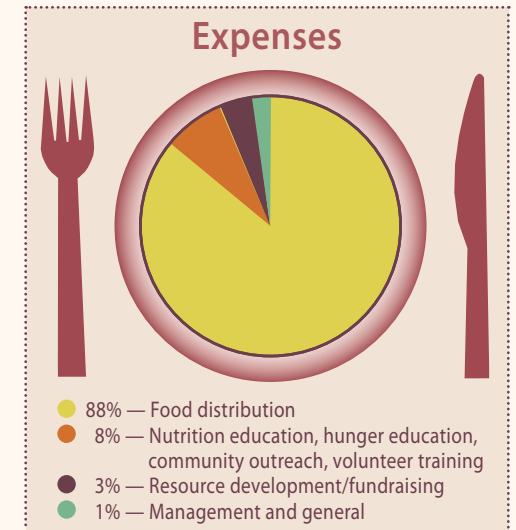
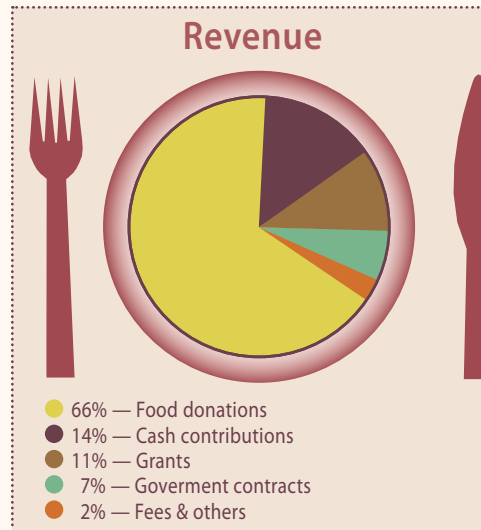
#### Program Services

Food distribution (Note 2)	\$21,749,048
Nutrition education, hunger education, community outreach, volunteer training	1,903,033

#### Supporting Services

Resource development/fundraising	\$803,529
Management and general	342,891

<b>Total Expenses</b>	<b>\$24,798,501</b>
-----------------------	---------------------



**Note 2:** The Food Bank recognizes donated commodities as a contribution (see Note 1) and counts them as inventory. Inventory is expensed when food is distributed.

Hard copies of the annual audit are available upon request; digital copies can be accessed on the About Us section of our website, [www.acfb.org](http://www.acfb.org). Every effort has been made to ensure the completeness and accuracy of the information contained in this report. Please contact the development department at (510) 635-3663 ext. 337 with any corrections.



ALAMEDA COUNTY  
COMMUNITY  
FOOD BANK

7900 Edgewater Drive, Oakland, CA 94621

Tel: (510) 635-3663 | Fax: (510) 635-3773

[www.accfb.org](http://www.accfb.org)

Brian Higgins • editor  
Antonio Mena • designer & illustrator  
Feeding America, Antonio Mena • photos

A Member of  
**FEEDING  
AMERICA**