

FOOD MATTERS

A publication of Alameda County Community Food Bank to celebrate the CalFresh Program and your good work

WINTER 2017



ALAMEDA COUNTY
COMMUNITY
FOOD BANK



Alameda County
Social Services
Agency

STORIES OF CALFRESH



Mariana (center)
with her children
at the Food Bank

Like most families in Alameda County, Mariana's family tries to stretch their income as much as possible. Mariana's husband works in construction, but his job is seasonal and hours aren't always steady. Plus, with the rising cost of living, it's getting more difficult to make ends meet.

Several months ago, Mariana's friends invited her to come to a presentation by Food Bank staff at Cherryland Elementary School in Hayward.

There, Mariana met Miguel Rosales, who explained the CalFresh program and its benefits. Previously, Mariana and her husband were hesitant to apply for CalFresh because of some misinformation they had heard. However, after understanding more about the program, she decided to submit her CalFresh application.

"It was hard to believe that there was a program that could help me get food for my family. I was so thankful when I found out I was approved for benefits," she said.

Mariana placed her trust in the Food Bank's staff. She was glad to be able to speak with someone in her own language and felt understood. She also receives food from a local food pantry.

"It has been a great help to get CalFresh," she said. "I am able to buy food for my family and save a little bit of money to buy school materials and clothes for my children."

The Food Bank's Outreach team helps families like Mariana's access enough healthy food so they can focus on securing a better future. Now, Mariana helps refer other community members to the Food Bank!

We're here to help!

The Food Bank Outreach Team is contracted by Alameda County Social Services to offer CalFresh outreach and out-of-office applications. Call (510) 635-3663 or email outreach@accfb.org.



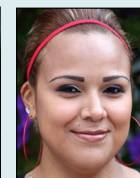
Liz Gomez
ext. 325



Anel Cruz
ext. 740



Crystina
Esparza
ext. 359



Patty
Figueroa
ext. 360



Cindy
Gonzalez
ext. 387



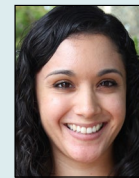
Lisa
Houston
ext. 355



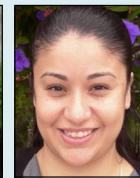
Hue Ly
ext. 356



Kim Ly
ext. 362



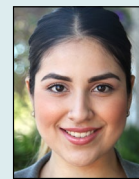
Ana
Marquez
ext. 386



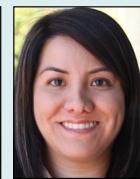
Vanessa
Ramirez
ext. 344



Miguel
Rosales
ext. 374



Leonela
Villanueva
ext. 305



Cristina
Torres
ext. 377



facebook.com/alcofoodbank

www.accfb.org

twitter.com/ACCFB





ADVOCACY UPDATE

The results of the election have left many people feeling uncertain. On behalf of our entire Alameda County Community Food Bank community—especially the 311,000 of our neighbors who use our services—we are recommitted to fight for what we believe:



- Food is a basic human right.
- Every child, adult and senior should have the opportunity to reach their full potential and live vibrant, productive lives—and good nutrition is essential to success.
- Our community and economy must be inclusive of everyone, regardless of race, gender, ability, how they worship, or who they love, and everyone should have a path to economic prosperity.

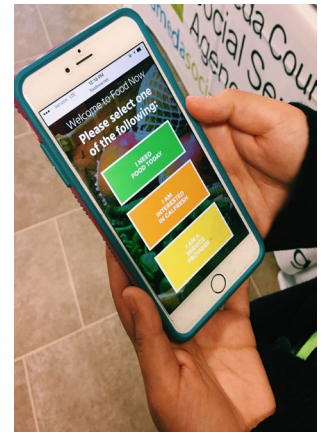
Our community is familiar with our innovative food programs. Some are surprised to learn, though, that our efforts also include tireless anti-poverty advocacy. Alongside powerful advocates, our team collaborates with elected officials at every level of government to ensure nutrition and other safety net programs are accessible and sufficient.

You may have joined us before as a contributor, a food drive participant, or a volunteer. But if you've never joined our efforts as an advocate, now's the time.

Read the Food Bank's [entire statement here](#).

LEVERAGING TECH TO END HUNGER

Last October, Alameda County Social Services Agency, Alameda County Community Food Bank, and ALL IN Alameda County launched



two ways to streamline the CalFresh application process to enroll thousands of eligible households.

The launch included a pre-filled CalFresh application mailed to households receiving Medi-Cal; and [Food Now](#), a pre-screening and eligibility website – both first time efforts in California's CalFresh enrollment process.

Potentially, these programs could result in more than 100 million meals annually for low-income residents.

[FoodNow.net](#) and [ComidaAhora.net](#) will be used by the Food Bank's outreach team, social service providers, and community-based organizations throughout the county.



The Alameda County Social Services website now offers eSAR7, an online option to fill out and submit the semi-annual report (SAR 7) at the [eSAR7 webpage](#).

Since June 2016, all CalFresh households, even those former change reporting households including homeless members, elderly people, or people with a disability must submit a SAR 7 form to continue receiving benefits.

- Homeless households should submit the SAR 7 form six months from their last interview.
- Elderly or disabled households with earnings should submit the SAR 7 form at 6, 12, and 18 months of their 24-month certification period.
- Elderly or disabled household with no earnings should submit the SAR 7 form 12 months from their last interview.

Did you miss a previous Food Matters edition? Visit the Food Bank's website: www.accfb.org/media/media_publications

Comments or suggestions? Please e-mail Alisa Loveman at aloveman@acgov.org