



ALAMEDA COUNTY  
**COMMUNITY  
FOOD BANK**

Until everyone's fed

# ANNUAL REPORT

2020

## A Tale of Two...Years

"It was the best of times, it was the worst of times..."

So goes Charles Dickens' opening to *A Tale of Two Cities*. Cliché, perhaps. But, like all the superlatives and analogies used to describe 2020, it fits.

The 2020 we set out for was not the year we ultimately experienced. Commemorating our 35<sup>th</sup> anniversary and building toward bold strategic goals were interrupted to respond to the greatest crisis our community has ever faced.

This report tells the tale of the two distinct — yet inextricable — "years" during the 12 months of our FY20. While it wasn't immediately evident, our work during the first half of the year was positioning us to respond to the second.

It was, of course, impossible to predict COVID — but its effects were predictable. We knew the hardest-impacted communities would be those we already helped — our own **research** released at the end of 2019 made that clear.

Our efforts in **racial equity** and **legislative advocacy** — acknowledging systemic causes of hunger bigger than one food bank alone can address — proved critical to our response.

And innovative programming — from **Food Recovery** to **CalFresh Outreach** — had been scaled, knowing the fragility of the government safety net and ACCFB's role when that net fails.

The tsunami-like wave of need that appeared (you may recall) *ahead* of the health crisis was unprecedented. But we were ready to respond, thanks to 35 years of partnership, preparation, and passion...mixed with a certain scrappiness for which Alameda County is known.

Ironically, it turns out, a pandemic — which could have been a detour — proved to ignite an acceleration of our operation's evolution.

Beyond "reporting" the progress of last year, this Annual Report charts the evolution.

Thank you for your amazing help in making this body of work possible.



## Board of Directors

### Officers

Beth Strachan, Chair, *Metropolitan Group*  
Robert Andersen, Vice Chair, *Xperi Corporation*  
Sayed Darwish, Secretary, *McAfee*  
Robin Nebel, Treasurer, *Drake's Brewing Company* (Retired)  
Sara Webber, Network Chairperson, *Berkeley Food Network*

### Members

Dawn Willoughby (Past Chair), *Innovation and Strategy*  
C.J. Bhalla, *Kaiser Permanente Northern Region*  
Ruben E. Canedo, *UC Berkeley*  
Ian Castille, *Capital Advantage, Inc.*  
Danielle Coleman, *VMware, Inc.*  
Shannon Datcher, *Blue Shield of California*  
Chris Gaither, *Executive Coach*  
Krista Lucchesi, *Mercy Brown Bag Program*  
Chuck Reinhard, *Ernst and Young LLP*  
Eric Reynolds, *The Clorox Company*  
Tiffany Taylor, *Genentech*

This list reflects board membership and affiliations for fiscal year ending June 30, 2020.



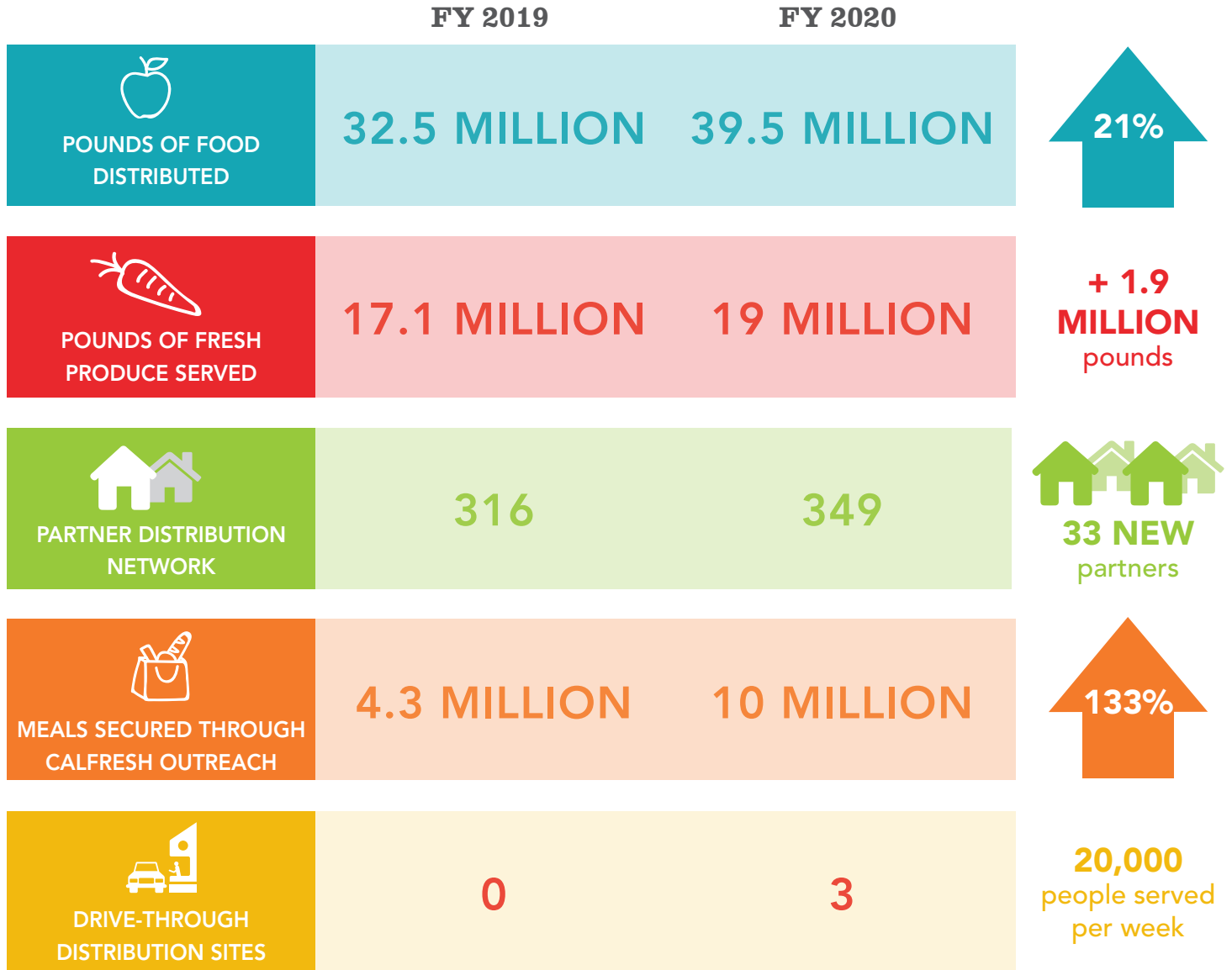
Suzan Bateson  
Executive Director



Beth Strachan  
Chair, Board of Directors



# FY 2020 AT-A-GLANCE



FACT: By April 2020 we estimate that 50% of the County was experiencing some level of food insecurity.

**OUR MISSION:** Alameda County Community Food Bank passionately pursues a hunger-free community

**OUR VISION:** Children, adults, and seniors of Alameda County do not worry about where their next meal is coming from

# GROUNDBREAKING HUNGER RESEARCH

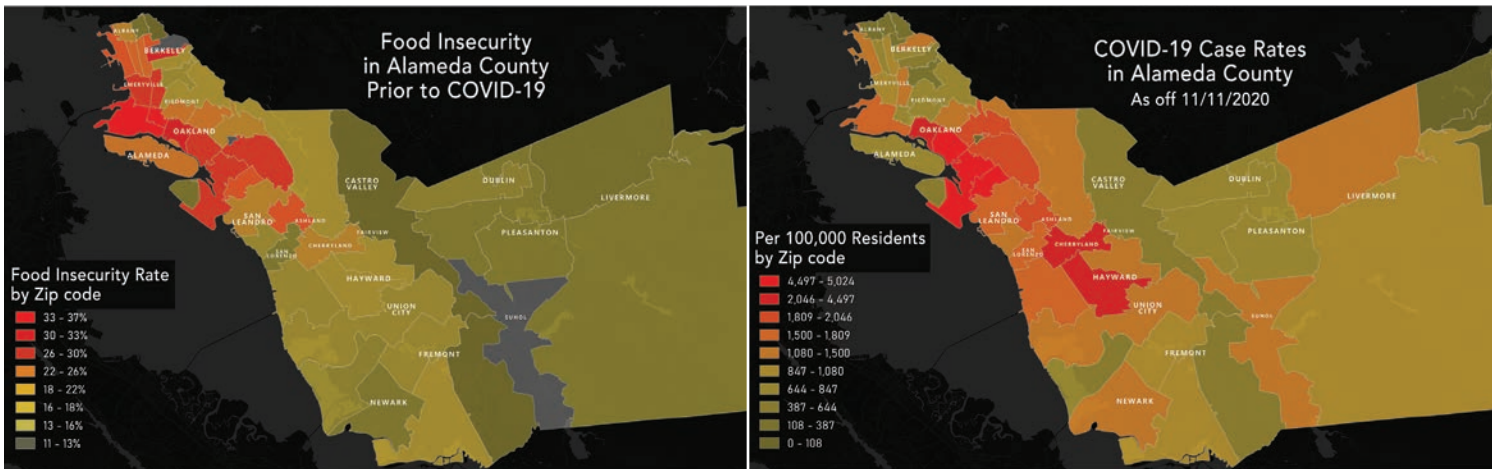
Knowledge is power, especially in the fight against hunger.

With support from the Stupski Foundation, we worked with the Urban Institute to improve our understanding of the risk for food insecurity and associated stressors across Alameda County.

The year-long study is one of the most in-depth assessments ever done on food insecurity and unmet need for services. The findings made front-page news for underscoring the unique demographics of Bay Area residents who face hunger. Among the findings: Alameda County residents facing food insecurity were substantially younger, more

educated, and more likely to be married with children than the general U.S. population. And, importantly, they are more likely to earn too much to qualify for government benefits.

Our research in FY20 also helped further our racial equity work and informed our early-response COVID relief efforts. With a firm understanding of the most vulnerable geographies and demographics — often a result of legacies of policies that disproportionately affect People of Color — we were able to quickly allocate resources, develop community partnerships, and open new distributions that were critical to our emergency response efforts.



Data – like these maps – showing the overlap between COVID-19 and food insecurity have been instrumental to informing our response to the pandemic.

## A POLICY WIN FOR THE AGES

For those of us who are food insecure, access to CalFresh (aka food stamps) makes a huge difference. It wasn't until the beginning of FY20, though, that nearly 50,000 of the most vulnerable people in our community were eligible for this essential anti-hunger program.

Extending CalFresh benefits to California residents who live on Supplemental Security Income (SSI) has long been at the top of our legislative priorities. And after a decade of partnership with a statewide coalition of advocates to lobby the state government, we finally prevailed.

The impact of this expansion was enormous: the equivalent of 8.5 million meals for low-income seniors and people with disabilities in FY20.

We know the pandemic has caused even more people to rely on social safety nets, especially CalFresh. Because of this expansion, thousands of us can shop for healthy groceries and save money for other basic needs.







## ENSURING AN ACCURATE CENSUS

The U.S. Census plays a huge role in our mission. A complete and accurate count is critical to the funding Alameda County receives for services, including hunger relief.

That's why in FY20, we partnered with the County of Alameda to help educate, promote, and encourage everyone to complete the Census.

Through the County's phone banking operation, ACCFB volunteers made 2,700 calls to historically undercounted communities. We distributed multi-lingual Census fliers in 205,000 of our Emergency Food Bags. And we assisted 1,900 clients in completing the Census through our Emergency Food Helpline.

These efforts paid off. Our County's response rate was 75.8%—an estimated 84,000 response improvement from 2010. For every person not counted, our County misses out on \$2,000 per year for 10 years. This increased response rate means more funding for our community and local government to address critical needs.







## FIGHTING WASTE...PROVIDING FOOD

When it comes to healthy food, we believe it should be eaten — not wasted.

As the largest food recovery organization in Alameda County, we have spent the better part of the last decade building our Food Recovery Program (FRP) to reduce waste and provide more meals for our community. FRP partners with more than 100 retailers countywide to collect millions of pounds of food surplus, **recovering nearly 4.7 million pounds of healthy food in FY20.**

However, expanding this critical program requires new resources.

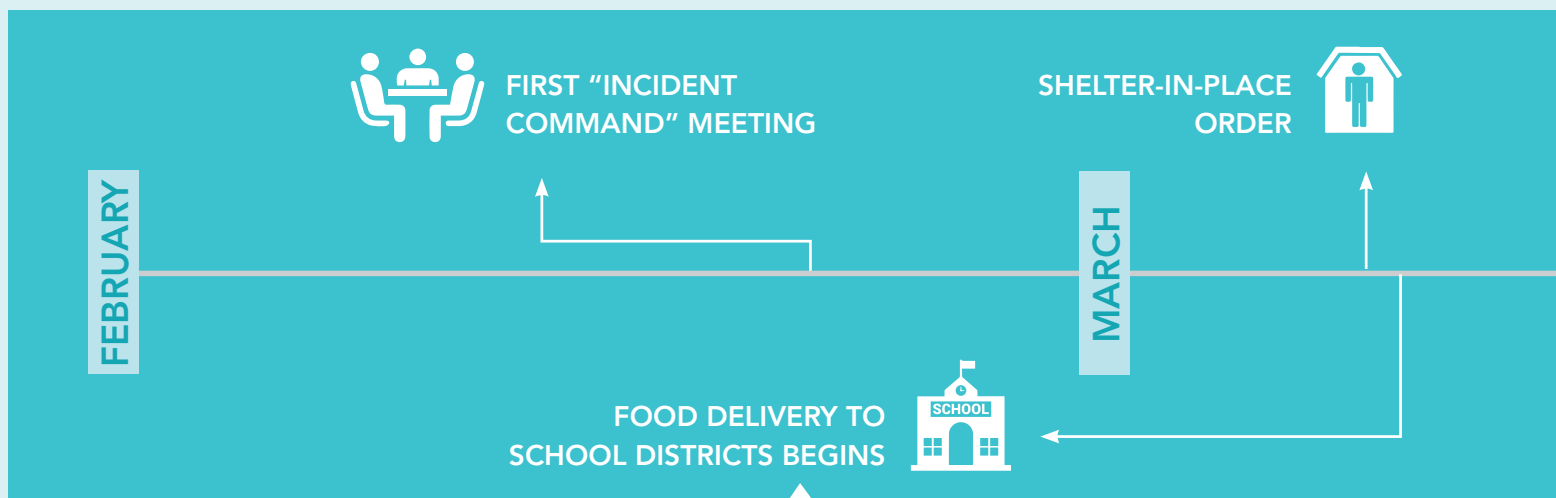
With funding from CalRecycle, secured by Waste Management of Alameda County, we added a new hybrid truck to the program. When operating at full capacity, this truck will help us provide more than **830,000 additional meals every year for residents at risk of or experiencing hunger.**

And meals are just part of the story. We estimate the food redirected to neighbors' tables through FRP last year had the environmental impact of taking 450 cars off Bay Area roads for a year.



# A Community in Crisis: Responding to COVID-19

A 1,000% increase in calls to our Emergency Food Helpline. Record high unemployment. School closures. A need for food assistance like we've never experienced before. The COVID-19 pandemic changed nearly every aspect of our work. The following timeline is just a glimpse into our response efforts during the first four months of this unprecedented event.



## KEEPING CHILDREN – AND THEIR FAMILIES – NOURISHED

Of all the questions that arose from COVID-19 and the shelter-in-place, few had as immediate an impact as this one: “What will school closures mean for our children?”

Children have always made up the largest single population we help, and schools have long been critical partners in our work. With schools closing in March, tens of thousands of households were at risk of losing access to healthy food. However, thanks to an outpouring of generosity — and compassionate partners — we helped ensure

these families had reliable access to nutrition even when their children couldn't be in class.

From the first moment of the shelter-in-place order, partners like the Eat. Learn. Play. Foundation and the Oakland A's (among countless others) stepped up to help us partner with 11 school districts across the county — including 12 schools within Oakland Unified School District alone. By the end of June, we had provided more than 900,000 meals through these school partnerships.





## A NEW FOOD BANK ESSENTIAL: DRIVE-THROUGH DISTRIBUTIONS

The stark images appeared within weeks of the pandemic beginning: Endless lines of cars, in every corner of the nation, waiting — often for hours at a time — for a box of emergency food.

Contactless drive-through food distributions like these quickly became a vital part of our response efforts — for both their safety and efficiency. People pull up their cars, pop their trunks, and masked volunteers place groceries inside.

In partnership with the County of Alameda, our first drive-through in Oakland opened in March,

servicing just 28 cars. That quickly grew to 1,000 cars, three days a week. Soon, we set up similar drive-throughs in Hayward and Pleasanton. And by the end of June, the three distributions had collectively provided 1.2 million meals to more than 62,000 families.

This drive-through model quickly became a critical means for our partner agencies as well, for which we offered guidance and training. In some cases, drive-through distributions helped agencies double or even triple the amount of food they provided.

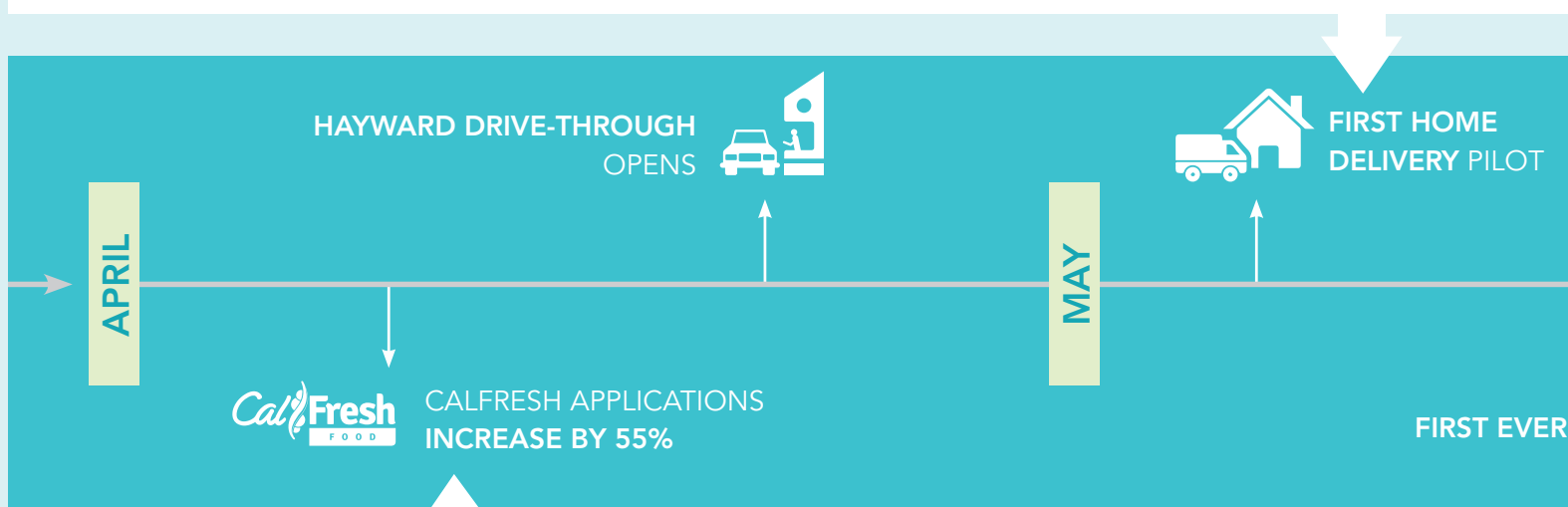
## HOMEBOUND, NOT HUNGRY

COVID-19 presented new challenges nearly every day. One of the biggest was how to help vulnerable — or even quarantined — households who could not make trips to grocery stores or emergency food distributions.

Central to this response was the need to further support partner agencies in the expansion of home delivery programs. Mercy Brown Bag, one of our largest senior-

serving and home delivery partners, expanded its role during the pandemic — both through its own efforts and in the development of Oakland at Risk, which paired homebound seniors with volunteers to help with various tasks, including food pickup.

We also partnered on several pilot programs to directly deliver healthy groceries to people who



## CALLING ON CALFRESH

Our CalFresh (food stamps) outreach department started 17 years ago and has long been a blueprint for similar programs nationwide. Among the biggest roadblocks for prospective clients seeking CalFresh was often the first step: getting to our office for application assistance. And that was *before* the pandemic.

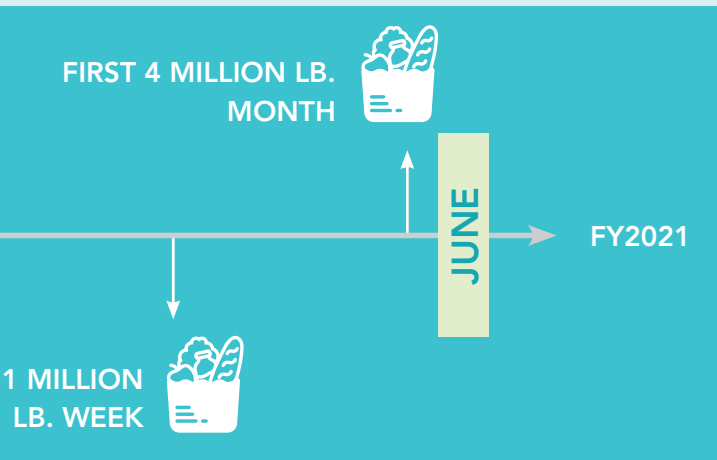
With COVID making it unsafe to host in-person application assistance meetings, we partnered with Alameda County Social Services Agency — with support from the Kaiser Foundation — to pilot CalFresh

application assistance over the phone.

When the shelter-in-place order began, we hit the ground running to safely assist clients by phone, exclusively, for the first time in our program's history. Despite unprecedented demand — and the same staff size to meet it — this 3-month pilot proved that we could provide the same quality support clients need without meeting in person. Through innovation and nimbleness, we assisted 7,323 clients with CalFresh applications in FY20, an all-time high.



were quarantined because of COVID-19 and neighbors most at risk — including individuals who are homebound and adults with disabilities. These programs, in partnership with TaskRabbit, Amazon Flex, and Alameda County Public Health Department, made contactless deliveries to nearly 7,000 households by the end of June.



## A new normal

By the end of June 2020, the Alameda County Community Food Bank of 2019 was hardly recognizable relative to the organization we'd become. Our programs and operations teams hired multiple staff to keep up with increased need. We were distributing 65% more food and had added 30 new distribution partners.

The immediate goal was to ensure our community could emerge from this pandemic nourished and as vibrant as ever. However, we also know this evolution over the four months from March to June was just the beginning of the organization we are to become, for the foreseeable future.

# FINANCIAL CONTRIBUTORS

The Food Bank greatly appreciates donations of any amount. Due to space limitations, FY20 donations of \$2,500 or more are listed. \*Indicates donor is deceased.

## Foundations

**\$500,000 +**

Eat. Learn. Play Foundation  
Stupski Foundation

**\$100,000 - \$499,999**

Charles and Helen Schwab Foundation  
The Crescent Porter Hale Foundation  
Evelyn and Walter Haas, Jr. Fund  
Feeding America  
First 5 Alameda County: Every Child Counts  
Hellman Foundation  
Jeff Bezos Foundation  
Sergey Brin Family Foundation  
Sobrato Family Foundation  
Sunlight Giving  
Tipping Point Community  
Wayne and Gladys Valley Foundation  
William G. Gilmore Foundation  
William G. Irwin Charity Foundation

**\$50,000 - \$99,999**

George H. Sandy Foundation  
Kapor Center for Social Impact  
Kenneth Rainin Foundation  
Koret Foundation  
The Morris Stulsaft Foundation  
The Patrick J. McGovern Foundation  
Schwab Charitable Fund made possible by the generosity of the Present Progressive Fund  
The San Francisco Foundation  
The Stocker Foundation  
Walter & Elise Haas Fund  
Jean and Lewis Wolff Family Foundation

**\$10,000 - \$24,999**

Bill Graham Supporting Foundation  
C. Edward & Edith Strobel Trust  
Cleaves and Mae Rhea Foundation  
Danem Foundation

Donald and Carole Chaiken Foundation

Edward Joseph Daly Foundation  
FThree Foundation  
Hilltop Foundation  
International Community Foundation  
Jay Pritzker Foundation  
Jewish Community Federation & Endowment Fund  
Kelly Foundation  
Morning Glory Family Foundation  
Pinpoint Foundation  
Sustainable Grant Making Partners Fund  
The California Wellness Foundation  
The James Irvine Foundation  
WHH Foundation  
Zalec Familian and Lilian Levinson Foundation

**\$5,000 - \$9,999**

Birches Foundation, Inc.  
Eden Area Foundation  
The Lewis Greenwood Foundation  
Links for Life Foundation - California, Colliers International  
Ohana Foundation  
Y & H Soda Foundation

**\$2,500 - \$4,999**

Hertelendy Foundation  
Surtman Foundation

## Businesses, Corporations & Corporate Foundations

**\$100,000 +**

Apple  
Bank of America Charitable Foundation  
Bayer Fund  
BlackRock, Inc.  
California HealthCare Foundation  
Chevron Corporation  
Chronicle Season of Sharing Fund  
The Clorox Company Foundation  
Delta Dental Plan of California

Gilead Sciences  
Google  
Kaiser Permanente Northern California  
Lam Research Corporation  
Oakland Athletics Community Fund  
Ross Stores Foundation  
Salesforce.com  
The Safeway Foundation

**\$50,000 - \$99,000**

California Association of Food Banks  
Everlaw, Inc.  
FedEx Services  
Illumina Corporate Foundation  
John Muir Medical Group  
Madden Charities, Inc.  
OSIsoft  
Target Corporation  
The Walt Disney Company  
Wells Fargo  
Whole Foods Market  
Wilbur Labs

**\$25,000 - \$49,999**

Balyasny Asset Management L.P.  
Blue Shield of California  
Calpine Energy Solutions  
Costco  
e.l.f. Cosmetics  
East Bay Community Energy  
Enterprise Holdings Foundation  
Federal Reserve Bank - San Francisco  
John Muir Health  
Kazan McClain Partners' Foundation  
MUFJ Union Bank Foundation  
Oracle Corporation  
Pacific Gas and Electric Company  
Patelco Credit Union  
Royal Coffee, Inc.  
Sandia National Laboratories  
ShopCore Properties  
Subaru of America, Inc.  
Sustainable Futures Fund  
Tyson Foods  
Walmart Foundation  
Workday Foundation

**\$10,000 - \$24,999**

1st United Credit Union  
Abbott Diabetes Care  
Alaska Airlines  
Boehringer Ingelheim Fremont, Inc.  
Brookfield Renewable Partners  
Cardenas Markets Foundation  
Cathay Bank Foundation  
Clif Bar Family Foundation  
DVD.com, a Netflix Company  
Four Twenty Seven Inc.  
GLENCORE Ltd.  
Hill & Company Communications  
Hormel Foods Corporation  
LaunchDarkly  
Lawrence Berkeley National Laboratory  
Magenta, Inc.  
Major League Baseball  
Matson Navigation Company  
McKinsey & Company  
The Morrison & Foerster Foundation  
Morrison & Foerster LLP  
Nordstrom  
Okta  
Piper Jaffray  
RBC Wealth Management  
Red Nose Day Fund  
Robert Half International Inc.  
Save Mart Supermarkets  
Schnitzer Steel Industries, Inc.  
Seagate Technology  
Signature Aviation  
Sodexo Foundation  
Square  
Sutter Health - East Bay Region  
Sweet Maria's Coffee Inc dba Coffee Shrub  
T. Rowe Price Foundation  
The TJX Foundation  
Therapy Stores, Inc.  
Turner Construction Company Foundation  
Union Pacific Foundation  
Xperi Corporation

**\$5,000 - \$9,999**

4D Molecular Therapeutics, Inc  
Alameda Health System  
Anthem Foundation  
ARM, Inc.  
Bank of Marin  
Bloom Farms  
Blue Bottle Coffee  
Boxlunch  
Broadway Mechanical - Contractors, Inc  
Carpe Diem Partners  
Case Pacific Company  
Comerica Bank  
Deloitte & Touche LLP  
East Bay Newborn Specialists, Inc.  
Economy Lumber Company  
Ernst & Young  
Esqueleto  
First Federal Savings & Loan of San Rafael  
Fremont Bank  
Gibraltar Steel Industries  
Golden State Warriors  
Grocery Outlet  
Heffernan Foundation  
HMC Designing Futures Foundation  
Hugh Groman Catering and Greenleaf Platters  
JanSport  
Johnson & Johnson  
MAPFRE Insurance  
Moss Adams  
NeoFill  
Nestle Dreyer's Ice Cream Company  
Nextsport  
NGP Capital  
Pacific Service Credit Union  
Pacific Union International Inc.  
Provident Credit Union  
Shartsis Friese LLP  
Simpson Strong-Tie Company Inc.  
SiriusXM  
St. George Spirits  
Sterling Health Services  
Streamlinevents  
Sysco Food Services of San Francisco  
Tinuiti (formerly Elite Sem)

TSNMI.com  
Tulloch Construction, Inc.  
The UPS Foundation  
Vistra Energy  
Wareham Development  
Waste Management of Alameda County  
Westcore Properties  
Zogenix Inc

**\$2,500 - \$4,999**

Adelante Capital Management  
All World Gayatri Pariwar, U.S.A.  
American Brass & Iron Foundry  
AppDynamics, Inc.  
Barnaby Ltd LLC  
Cemex  
Chambers & Chambers Wine Merchants  
Check Point Software  
Corning Incorporated Foundation  
Crate & Barrel  
Dealey, Renton & Associates  
Greene Radovsky Maloney Share & Hennigh LLP  
Insperty  
Livermore Valley Craft Beer Foundation  
mailchimp  
The Marcus & Millichap Company Foundation  
Mascoat Sports  
Medtronics  
Morgan Stanley Foundation  
NextEra Energy  
Novartis Institute for Biomedical Research  
OUTFRONT  
Pete's Concrete Pumping Service  
Port of Oakland  
Progressive Asset Management, Inc.  
Prologis  
Protein Research  
Quality Glass, Inc.  
Richard Lumber Co. Inc  
Sarcina Industries LLC  
SiriusXM  
Smart Foodservice  
Subway Restaurant  
TPG Global, LLC

Varian Medical System  
Wilson Sonsini

## Religious & Community Organizations

**\$25,000 +**

Temple Sinai  
**\$10,000 - \$24,999**  
Cornerstone Fellowship  
Congregation Beth Israel  
Lynnwood United Methodist Church

**\$5,000 - \$9,999**

Anonymous  
Asbury United Methodist Church  
Congregation Beth-El  
Congregation Beth Israel  
Beth Jacob Congregation  
Kehilla Community Synagogue  
Lift Up  
National Association of Letter Carriers  
Rotary Club of Oakland #3  
Skinner For Senate 2020  
Temple Beth Abraham

**\$2,500 - \$4,999**

Charities Aid Foundation of America  
City of The Lord Zion  
Community Health Center Network  
Congregation Beth Emek  
Congregation Nevitot Shalom  
First Congregational Church of Berkeley  
Humanity United  
Kiwanis Club of San Leandro  
Lakeshore Avenue Baptist Church  
Montclair Women's Club  
Park Day School  
Plumbers & Steamfitters Local 342  
Rotary Club of San Leandro  
Saint Mary's College High School  
Soroptmist International of the East Bay  
Trinity Evangelical Lutheran Church



# FINANCIAL CONTRIBUTORS (CONTINUED)

UCSF East Bay Department of Surgery  
University Bible Fellowship

## Individuals & Family Funds

### \$100,000 +

Wayne Ainsworth and Elizabeth Yagle  
Anonymous (6)  
The Barbara and Gerson Bakar Foundation  
Diana Cohen and William Falik  
Pete and Amanda Docter  
Ann and John Doerr  
Gerald M. Kline  
Chris Larsen and Lyna Lam  
Magid Family Fund in memory of Albert and Marian Magid  
Beth and David Sawi  
Mark and Susan Stutzman

### \$50,000 - \$99,999

Anonymous (4)  
Anthony Bernhardt and Lynn Feintech  
Gordon Chaffee and Nancy Kedzierski  
Sayed and Elise Darwish  
Debra Farb and Eric Sippel  
Frances Hellman and Warren Breslau  
Rodan Family Foundation  
Geomar Foundation  
Semilla Fund  
Jennifer and Paul Vetter  
Virani Family Fund  
Kathryn and Robert Vizas

### \$25,000 - \$49,999

Tarang and Hirni Amin  
Anna Catherine Foundation  
Anonymous (4)  
Sandra and Paul Bonderson  
Buuck Family Foundation  
Matthew Cooper  
Mary Jane Dean  
Benedict and Mary Feinberg  
David and Melodie Graber  
Terri Hearsh  
Steve Heller and Therese Hickey  
Ishiyama Foundation  
Nancy C. Lenvin

Paul Markovich and Lisa Alumkal  
Stephen and Emily Mendel  
Michael and Karen Meryash  
Ivan and Maris Meyerson  
Mark Miller and Maggie Sin  
Joyce A. Milligan  
Mark Nienberg and Jody Zaitlin  
Gregory Pedemonte and Anne Wagley  
PM Schlein Family Foundation  
Carole C. Quan  
The Honorable Yvonne Gonzalez Rogers and Matthew Rogers  
Rochelle Shapell and Lorne Buchman  
William and Solveig Shearer  
L. Marc and Sargina Silvani  
Joanne Smyth and Paul Vartanian  
Daniel Stefek and Amy Stoloff  
The Partnership Foundation  
Jonathan L. Walker  
Watson Trust at the East Bay Community Foundation  
Dawn and Steven Willoughby

### \$15,000 - \$24,999

Clay and Ricki Akiwenzie  
Lucy Almers and Sean Rhea  
Joseph Y. Amram  
Anonymous (9)  
Carol Bieri and Joel Sanders  
Susan M. Boyers  
Lionel and Lorraine Chan  
Jim Chanin and Rachel Richman  
Gavin Chen and Camille Metzinger  
Walter and Anne Clark  
Coleman Family Foundations  
Kimball and Kazumi Cranney  
James and Leslie Dearbaugh  
Gerald and Gail Eiselman  
Peter and Anne Esmonde  
Joel Fajans and Karen Zukor

Allen Feldman  
The Flora Family Foundation  
Marjorie O. Follette  
Jennifer and Abe Friedman  
Stanley and Mary Friedman  
Peter and Elaine Geffen  
Jeffrey Goodby and Jan Deming  
Janet and Joseph Grodin  
Matthew and Ann Harren  
James and Cynthia Hebert  
Rosemary Jenckes  
Jerry and Jan Kennelly  
Arron and Yuliya Klein  
Lesbians For Good  
Barbara MacAuliffe  
Roy and Jeana Maute  
Thomas and Jill McCleary  
Juanita J. Melrose  
Robert & Catherine Miller  
Ann Mohler and William Moseley  
Marcia S. O'Kane  
Sheila Ortloff  
Carl and Eric Peterson  
Pure Dana Fund  
Nonie B. Ramsay  
Robinson Family Fund  
Yassen and Biz Roussev  
The Rose Fund at The East Bay Community Foundation  
Rob and Eileen Ruby  
Philanthropic Fund of the Jewish Community Federation and Endowment Fund  
Douglas and Julie Rusch  
James and Barbara Rutherford  
Nicolas A. Sayavedra  
Matthew and Rachel Scholl  
Seevak Pearson Fund at The East Bay Community Foundation  
Rick Seiter and Riffi O'Brien  
Kikuyu U. Shaw  
Cynthia Shevel and Elaine Selo  
Hart F. Smith  
Kong-Meng Tan, MD and May Chen

### \$10,000 - \$14,999

Alderyn Fund at San Francisco Foundation  
Elizabeth and Robert Andersen  
Anonymous (27)

David Arpi  
Don Atkinson Adams  
Lina Au  
Banks Family Foundation  
Michel Bertin  
Karen and Warren Bird  
Ryan and Annabelle Blackman  
Vickie Blakeslee and Clive Schlieve  
Jerry and Mary Ann Boddum  
Catherine I. Boggs  
The Breen Family Fund  
William and Emily Brizendine  
Bylo Chacon Charitable Fund at Schwab  
Phyllis Calechman  
John Canelake  
Robert J. Carr  
Richard and Tracey Cassard  
James Cavalieri III and Susan Cavalieri  
Alfonso and Lydia Chan  
Kevin Chang and Sabrina Chan  
Darren Check  
The Chow Family Charitable Fund  
Annie Chuang and Matt Beltramo  
The Cleaves and Mae Rhea Foundation  
Troy and Shannon Datcher  
Sharon Davidson  
Eugene De Juan  
Bonney De Long-Cotty  
M. Quinn Delaney and Wayne Jordan  
Donald and Susan Wilson Fund  
DuBose Family Foundation  
Sheila Duignan and Michael Wilkins  
Helen Duncan and F. Bowie  
Kendra Ellis and James Paterson  
James Barstow and Susan Ensing  
Jacob and Louise Epstein  
Robert Feldman, M.D. and Flora Peters Feldman  
Colleen Fong and Carl Stempel  
Marilyn W. Ford  
Ann C. Foster  
Fox Family Fund

Ellen Frankel and John Crossman  
The Futures Project  
Aaron T. Garnett  
Miriam Gersten Gohlke  
Elliott and Teresa Goodwin  
Faith Hall  
Jessica Hallett  
Drucilla D. Hamilton  
Robert and Linda Harris  
Jon and Connie Hartung  
Thomas and Mary Ann Hays  
Linda J. Headrick  
Paul Herzmark and Sheila McCormick  
Lisa R. Hirsch  
Jeffrey and Johanna Iffeld  
Patrice Ingram  
Patsy Ishiyama  
Andree D. Jones  
Ben Keller and Helen Fitzmaurice  
Maureen A. Kennedy  
The Kenneth Rebecca Fund  
Erin Kinikin  
Lisa Kirkland  
Kurata Family Foundation at Fidelity Charitable  
James and Kathy Lee  
Lois Lemire  
Sally Ann Lewis  
The Lindsey Family Fund  
Louis and Anne Abrons Foundation, Inc  
Steve and Mary Jane Lowenthal  
Lorraine M. Lupo  
Dorothy Lurie  
David and Cecily Majerus  
Richard Marcus  
Nancy and Jack Marling  
The McEwan/Lane Fund at Morgan Stanley  
Michael McGuire and Cynthia Morton  
Suzanne and William McLean  
Mitchell and Lai-Ming Chan Meyer  
Susan Miller and Jonathan Davis  
John and Nadine Mills  
Marianne Mitosinka and George Wick  
Priscilla Myrick and Thomas Cutillo

Thomas Parenty and Yang Yang  
The Peterson Family Fund at East Bay Community Foundation  
Matt Peterson and Bob Bates  
William and Leslie Piels  
Eric and Yasuko Powell  
Judith Proller and Daniel Selleck  
Sean Quinlan and Karelle Celestin  
Rasmussen Family Fund  
Kenneth and Frances Reid  
Pamela Riley and Denis Collins  
Bonnie Magid Roditti and Fred Wink  
Jesse and Joan Rothstein  
Elaine Farge and Andy Rubini  
Joan Sarnat and David Hoffman  
Ken and Margie Sauer  
Edward and Liliane Schneider  
Garrett and Cheryl Schwab  
Mark and Kim Serpa  
Howard and Joyce Shao  
Susan M. Sherrerd  
Peter Sherris and Astrid Lacticis  
Emily Smith and Katherine Morris  
Marilyn and Leland Snider  
The Soghikian Family Foundation at Morgan Stanley  
Renata Sos and Judith Miles  
James Spencer  
Brian Stoler and Elizabeth Bisesi Jardina  
Inge Svoboda  
Jeffrey Sykes and Denise Martini  
Miye Takagi  
Lauren and T.S. Tate  
The Upjohn Fund of San Francisco  
Melissa Tidwell  
Ama J. Torrance  
Susan and David Tunnell  
John Walsh  
William and Denise Watkins  
Williams-Malone Foundation  
Winifred Y. Wood

Denise Yamamoto and Josh Hannah  
Michael Yoshikami  
**\$5,000 - \$9,999**  
Dr. Henry Abrons and Dr. Li-Hsia Wang  
Ken Alex  
Denise Allen and Mark Hayes  
Allen H. & Selma W. Berkman Charitable Trust  
Aloha Ke Akua Ohana Trust  
Alexander and Maryann Amado  
Josy Amann  
Tim Strohane and Jan Ambrosini  
Carole D. Anderson  
Jeffrey Angell and Joan King-Angell  
Anonymous (31)  
Judd and Tamar Antin  
Mukarram and Latha Attari  
Catherine Aydelotte  
John W. Bacon  
Gilbert Badilla  
Jeff and Ruth Bailey  
Susan and John Bateson  
Lee and Cathleen Battles  
Joanna Beam  
The Beier Wright Philanthropy Fund at US Charitable Gift Trust  
Derek and Rachel Benham  
Gene Berdicevsky  
Chandrika and Alok Bhalla  
Shawn and Leigh Biega  
Dorothy and John Black  
Patricia A. Blackwell-Marchant  
Ricki Blau and William Reeves  
Anne Bolla  
Severin Borenstein and Margaret Stewart  
Ian and Andrea Boyd  
Christine Brigagliano and Morris Baller  
Ardra C. Brodale  
Kathryn Broughton and Mark Martin  
Donald and Marian Bruns  
Jim Bullock and Ralph Elder  
Steve and Alison Burke  
Lillian Cadenasso  
Greg and Carolyn Call

# FINANCIAL CONTRIBUTORS (CONTINUED)

|   |   |  |  |  |  |  |
|---|---|--|--|--|--|--|
| Peter Cardiello and Soyeon Kim          | Geoffrey Foster and Nicole Jones  | Ann L. Johnson                                       | Sethurathinam Meenakshisundaram                        | Eric Reynolds and Emilio Seijo                                   | Brett Stineman and Linda Larkin            | Mohamed Ziauddin                               |
| Brandon and Anna Carr                   | Susan Fox   | Everett and Kristin Johnson                          | Suzanne Mellard and Lon O'Neil                         | Kennedy and Kathleen Richardson                                  | Arnold and Emily Stoper                    | Ami and David Zusman                           |
| Terry Carroll and Linda Dardarian       | Kevin and Laura Francis   | Marie Kalb   | Joel Mesnikoff   | Marie Riehle and Daniel Altemus                                  | Nancy A. Storch                            | Olivier Zyngier                                |
| Neil Carvajal and Susan McDonough       | Valerie Fraser  | Andy Kalin   | David Metz and Rachel Aberbach Metz                    | Ed G. Roach  | Tracy and Joe Campisi                      | <b>\$2,500 - \$4,999</b>                       |
| Joanne F. Casey                         | Tarric and Remily El-Sayed  | Ramesh and Shakira Karipineni                        | The Meyer Family Fund at East Bay Community Foundation | Jason and Donna Roberts  | Jill Suttie and Donald Arbitblit           | Denise Abrams and David Harrington Fund        |
| Sarah Chamberlain and Thomas Curtis     | Bruce and Diane Friend  | Naneen Karraker                                      | Linda and Tim Millar                                   | Shannon Rogers and Rohan Kalbag                                  | Manning Sutton and Hilary Goldman          | Martin Abrams                                  |
| Richard and Lucy Chen                   | Andrea Frome  | Katherine Hobbs and Lynn Marie Keslar                | In memory of Dr. Alan Michael Miller, J.D.             | Thomas J. Rothenberg   | David and Robin Sweet                      | Evan and Debbie Adams                          |
| Jennifer Chiu                           | Mary Fuller and Katrina Kellogg   | Joan King  | Todd Mills and Kim-Dung Nguyen                         | Nancy Rothman and Lou Lavigne                                    | Eugene and Ellen Switkes                   | Charles Addison                                |
| Michael Choy and Shannon Moffett        | Paul and Eleanor Gertmenian   | Tamara and Kenneth Kolda                             | Kenneth and Janice Milnes                              | Elizabeth Ruhland and Joshua Miele                               | Tan Family Foundation                      | Cynthia and Tom Adkisson                       |
| Ronald and Susan Choy                   | Katya and Joel Gerwein  | Korsan Fund at Fidelity Charitable                   | Pam Moore  | Ruth Arnhold Endowment Fund at the East Bay Community Foundation | Helga Tarver                               | Ronald Adler, M.D. and Patricia Adler          |
| Christopher Chua                        | Brian Godwin  | Jacques and Marie Lagarde                            | Randy Morse  | Margaret Rykowski  | Teresa Tauchi and Sam Boonin               | Richard and Carolyn Aguirre                    |
| Jean M. Ciriello                        | Brian Goldman and Zoe Palitz  | Louise Laufersweiler, C.F.A. and Warren Sharp, Ph.D. | Michael Moss   | Janet and Eduardo Salinas  | Andrea Taylor                              | Ameena T. Ahmed                                |
| Charles W. Clay                         | Viola Gonzales and Penn Hughes  | Tom LeClair  | Carol and David Moyer                                  | Nora Salvador  | Ying Mei Tcheou and Jack Cunningham        | Karl R. Aitken                                 |
| Barbara Cohen                           | Lynn Greenberg and Michael Rothschild   | Carrie and John P. Lee                               | Clifford Nakamoto, D.D.S. and Betty Nakamoto           | Ludwika Schein   | Samuel T. Test                             | Alice Akawie and Stuart Pivnick                |
| Sandy Cohen                             | The Eric Grosse and Brenda Baker Donor Fund   | Chris Lee and Scott Shaffer                          | Kim Nelson and Warren DeSouza                          | Norma J. Schmitz   | The Elder California Foundation            | Susan Albert and Bruce Maximov                 |
| Robert and Ingrid Cole                  | Hacienda Helping Hands Fund at the East Bay Community Foundation                                | Theresa Lee and Frederick Lass                       | Karyn and Jack Newman                                  | Mary Schoen and Carlos Perez                                     | The Lewis Greenwood Foundation             | Jane and Vassilios Alexiadis                   |
| Peter Coletto                           | Steve Hallock   | Christina Legg Greenberg and Brian Greenberg         | Matt Nielson and Yao Liow                              | Jonathan Schorr  | The O'Dea Family Charitable Fund           | Julia and Jason Allen                          |
| Christina Coll and Bashir Agah          | W. James and Mary Ann Hannon  | Stephanie Leider                                     | Christine Noma and Stephen Fong                        | Sarah Schuppisser and Michael Bull                               | Carol and Garret Thunen                    | Hope and Noah Alper                            |
| Chip and Rebecca Conradi                | Thomas Hargrave   | Brenda I. Lesh                                       | Marge O'Halloran and Chris Lutz                        | The Schwab Family Fund at East Bay Community Foundation          | The Honorable Jon Tigar and Caroline Avery | The Altman 2011 Charitable Lead Annuity Trust  |
| Scott and Valerie Corvin                | Maya Harris and Tony West   | Peter Lester and Ann Ludwig                          | Laurence O'Neill                                       | Cecile and Chris Seams   | Tim and Peggy Toppin                       | Alejandro Alzugaray                            |
| Christina Crowley and Peter Hobe        | Ruth Hartman and Gary Wolff   | Monica Lewis and Charlie Hogg                        | Thomas and Pamela Orloff                               | Peter Seibel and Lily Huang                                      | James Trager and Angela Hwang              | Denise Anderegg and Martin Leima               |
| Michele Cucullu                         | Jamin W. Hawks  | Marcus Libkind                                       | Madelon L. Palma                                       | Chiaki Treynor   | James V. Tyler                             | James Anderson, D.D.S. and Carol Grimm, D.D.S. |
| Sophia Cui                              | William Heil  | Suzanne Lilienthal and David Roe                     | Kathleen and Keith Parker                              | The Lynn and Kent Trust  | Joan Uhler                                 | Richard and Carlene Anderson                   |
| Rachel Cukierman                        | Susanne Heim  | Peter and Tami Linde                                 | Michael and Ann Parker                                 | Carole Ungvarsky and Christopher Killian                         | Carole Ungvarsky and Christopher Killian   | Bret Andrews and Nancy Ragle                   |
| Francesca Cunningham and Ann Harvey     | Joseph Hellerstein and Adene Sacks  | Karen P. Long  | Ellen J. Pelissero                                     | Bernhard H. Van Lengerich  | Bernhard H. Van Lengerich                  | Anonymous (56)                                 |
| Leonard and Margaret De Somma           | Paul Hennessey and Susan Dague  | Denise MacGregor-Franco and Jeffrey Franco           | Maude Pervere and Samuel Miller                        | Joseph Victor  | Joseph Victor                              | The Ansel Family Fund                          |
| David DeJong                            | Glen and Mary Hentges   | Barbara Malina                                       | Morgan Pike and Lori Pettegrew                         | Rae Victor   | Rae Victor                                 | Marcia and George Argyris                      |
| Barbara F. Dengler                      | Ben Hewlett   | Patrick Marks and Amanda Schapel                     | Seemon and Natalie Pines                               | Julie Waldman and Al Germain                                     | Jerry Walsh                                | Christi Americh                                |
| The Doctor Family                       | Jacqueline Hindawi  | Julius Marshall                                      | Linda Polse and Janice Corran                          | Jerry Walsh  | William K. Warburton                       | Mary Arnold                                    |
| Kathleen and Eamonn Dolan               | Steven Hogge  | James Marsters Jr. and Laura Cheever                 | Eric and Susan Poncelet                                | William K. Warburton   | Susan D. Ward                              | Aditya Arora                                   |
| Richard Masterson and Debra Dove        | Suzanne Holloway  | Thomas Matson  | Jim Price  | Susan D. Ward  | E. Margaret Warton and Steve Benting       | Lee Aurich and Helen Hutchison                 |
| Barry and Dori Dubin                    | Laura Holmes and Tyler Odean  | Timothy and Camilla McCalmont                        | Q & V Peterson Charitable Foundation                   | Joseph and Arnette Whitehouse                                    | Katherine G. Welch                         | Renata Bachelor                                |
| Angeline and Kurt Edsinger              | Jessica Horowitz and Jeff Wang  | Bruce McCarthy and James Macksood                    | Karen and Lawrence Queen                               | Joseph and Arnette Whitehouse                                    | Thomas Werges                              | Ronald and Suzanne Bachman                     |
| Entrekin Foundation                     | Gayl Huston and Ralph Pais  | E. Thomas and Mary McCarthy                          | Richard J. Raffanti                                    | Elizabeth Werter and Henry Trevor                                | Elizabeth Werter and Henry Trevor          | Gabriel Balazs and Lori Souza                  |
| Paul Epstein and Jennifer Traub         | The Frederick J. Isaac Philanthropic Fund of the Jewish Community Federation and Endowment Fund | David McClain & Marilyn Wong Fund                    | Alan Rager and Shayda Haghgoo                          | Patti White and John Sander                                      | Joseph and Arnette Whitehouse              | Paul and Dana Banchemo                         |
| James and Sandra Farrell                | Isaac Rose Fund   | Bernadette McDonald                                  | Craig Ragg   | Joseph and Arnette Whitehouse                                    | Laura Woo                                  | Paul Banh and Ka Wai Wong                      |
| Joe and Tamar Fendel                    | Ellen A. Jacobs   | Rick and Carolyn McFarland                           | Krish and Padma Ramakrishnan                           | Crystal Woodford and Colin Dentel-Post                           | Crystal Woodford and Colin Dentel-Post     | Hanna Bankier                                  |
| Sheralyn Fields                         | Zachary and Sarah Jarvis  | Christopher McKenzie and Manuela Albuquerque         | Marc Ramirez   | Karen and Burt Yarkin  | Gleb Yushin                                | Sandy Barbour                                  |
| Michael and Margi Fin                   | William and Shu-Hui Jeng  | Nick and Liza Mealy                                  | Philip and Carla Reed                                  | Gleb Yushin  |  | Debbie and Daniel Bardon                       |
| Claude Fischer and Ann Swidler          | Miriam John   | Jay and Elizabeth Mechling                           | Diane Regas and Daniel Lashof                          |  |  | Jane Bark                                      |
| Benjamin Fisher Sr. and Margaret Fisher |   |  | Chuck and Krista Reinhard                              |  |  | Alisa A. Barnes                                |
| David Fleck                             |   |  | Linda Rendle   |  |  | Susan F. Barquist                              |
| Brigitte and Louis Fisher               |   |  |  |  |  |  |
| Erin Flynn and Chloe Atkins             |   |  |  |  |  |  |



# FINANCIAL CONTRIBUTORS (CONTINUED)

|   |  |  |   |   |   |   |
|---|--|--|---|---|---|---|
| Teri Barr and Charles Stewart           | Kathleen J. Carrai                         | Wayne and Diane Diamond and Family         | Sean Fottrell and Penny Tse Fottrell  | Garrett Gruener and Amy Slater            | Eric Huppert                              | Henry Kingdon and Jodi Kremiller Kingdon  |
| Annie Barrows and Jeffrey Goldstein     | Maureen L. Cassingham                      | Connie Dias and Donald Parkin              | Dana Fox and Paul Langlie   | Jeff Gutkin and Helene Blatter            | Olivia and Thacher Hurd                   | Tracy Kirkpatrick and Randy Rogers        |
| Andrew Beahrs                           | Kara M. Caven                              | Joel and Ursula Jones-Dickson              | Kathryn Frank and James Blume   | Lance and Katherine Gyorfi                | Robert and Jean Houston                   | Patricia E. Klahn                         |
| Becker Family Philanthropic Fund        | Michael Charlson and Susan Austin          | Michael Di Filippo and Beth Fein           | Charles Freiberg and Andrea Alfano  | Joanne Hagopian and John Eknoian          | Zach and Ann Hutton                       | Shelley Klop and Robin Packerl            |
| Mike Behnam                             | Lydia and Kashif Chaudhry                  | Amy and Lawrence Donovan                   | Elizabeth Frey  | Thomas Halbach                            | Maritza and Timoteo Ilario                | Eric and Angela Korpela                   |
| Zachary Beiley                          | Kenneth Cheitlin and Betsy Keeler Cheitlin | Helen and David Dornbusch                  | Ilona Frieden and Mark Jacobson   | George Hale and Deborah Putnam            | John and Christine Ireland                | Ernest M. Kotlier                         |
| Martin and Ronna Benjamin               | Fu-Tung Cheng                              | Mary Ann and Milton Downer                 | Christopher Fry and Kim Harley  | Kerry Hamill and Roland Katz              | Karen Ivy and James Ringland              | Alan Kraut                                |
| Paul Bennett                            | Whitney and Brett Christopoulos            | Kathleen Doyle                             | David Fry and Whitney Morris  | Heather Hanly and Daniel Purcell          | Lisa and Kenny Jackson                    | Annis and Nicholas Kukan                  |
| James Benson                            | Ann Claesgens                              | Jennifer and Kyle Dyck                     | Patricia Fuzesy and Jonathan Krueger  | Erica Hansen                              | Justine and Oren Jacob and Family         | Ram Kumar                                 |
| Kimberly Benson                         | Seena Clark                                | Holly L. Earl                              | Bill Gagen, Jr. and Marianne Gagen  | Marcella and Stephen Hardy                | David and Patricia Jacobson               | Tiplada Kunakemakorn                      |
| Noah and Cachet Berger                  | Michelle and Mark Claudnic                 | Bruce W. Ede                               | Chris J. Gaither  | Alan Harper, Ph.D. and Carol Baird, Ph.D. | Nell Jenkins and Scott Troyer             | Ellen Lake and William Hoerger            |
| Jodie Berger                            | Mary Clemency                              | Egan Family Charitable Fund                | Carolyn Gee and William Heyward   | Harriet Hartley                           | Margaret A. Jennings                      | Patrick S. Lane                           |
| Sandra and Geoff Berggren               | Debra Coggins and John Kikuchi             | John Ehrlich                               | Hal and Pat Gelb  | John Hartog and Margaret Hand             | Douglas and Anne Jensen                   | Steven Lanzisera                          |
| Arthur S. Berliner                      | Danielle and Rufus Coleman                 | David and Karen Eichler                    | Clara Gerdes and Ken Greenberg  | Andrew and Carol Hatcher                  | Rosalie G. Jing                           | Richard and Joyce Lashof                  |
| Wray Berrett                            | Robert and Jessica Collett                 | David Eifler and Rachel Morello-Frosch     | C.R. Gibb   | Jennifer Hayward Bramhall                 | Carole Joffe and Fred Block               | Amy Lau                                   |
| Travis and Stephanie Bethune            | Jesse Collins                              | Robin Einhorn                              | Richard and Sandra Gilbert Family Fund at the East Bay Community Foundation | Allan Henderson                           | Andrea Johnson                            | Patricia W. Lau                           |
| Lisa Biggers                            | Paul Collins                               | Michael and Molly Eiseman                  | Erik Gillig   | James Hendriksen and Terisa Chaw          | Michael Johnson and Elizabeth Glenewinkel | Gabriela Laz                              |
| Paul Bixby and Karen Smalley Bixby      | Mikal Condon and Michael Ng                | Stacie and Kenny Epsman                    | Larry Ginsburg and Lynn Simon   | Eugene and Barbara Henry                  | David and Phyllis Johnston                | Daniel and Laura Leaverton                |
| Sandra Blair and Carol Cohen            | Jane and Steve Conn                        | Lisa W. Esherick                           | Heidi Giordano and Elena Ortiz  | John Henry                                | Irene M. Jones                            | Mary K. LeBlanc                           |
| Lisa and Nigel Blampied                 | Sam Conner                                 | Jacqueline Espinoza                        | Giovanna Giuliani and Paul Carney   | Rosemary Henze and Joseph Grieco          | Joanne Jones                              | Caron Lee                                 |
| Hadley and Mary Anne Bland              | Douglas Cooper                             | Ryan and Kirsten Ettl                      | James Glauber   | Ed Herbert and May Fung                   | Thomas Jones III and Elisabeth Jones      | Gorton Lee and Janice Chin                |
| Ann Blessing and Eric Eschen            | Margaret Corrigan                          | Anne B. Evans                              | Richard and Janet Gless   | Ben Hermalin and Ruth Konoff              | Yatish Joshi                              | Patricia W. Leicher                       |
| Michael and Anna Bliss                  | John H. Cortesi                            | Gregory and Charlotte Evans                | Susan Goldstein and Andy Kivel  | Cecile and Emmanuel Hernandez             | Eliot and Philippa Jubelirer              | William and Carol Leimbach                |
| Shawnda and Rafael Bolon                | Joseph and Sandra Costa                    | Robert Fabry and Susan Taylor              | Nancy Goler and Kelley Berg   | Edmund and Stuart Ozer                    | Sam and Patricia Juliano                  | Denise LeNoir and Michael LeNoir, M.D.    |
| Stephen Bomse and Edie Silber           | Carol Counts                               | Fairclough Family Fund                     | Jon and Mio Good  | Lorie Hickerson                           | Janis Kahn and Jeffrey Greve              | Douglas Letterman and Christine Lee       |
| Frederick Booker and Blythe Mickelson   | Alan Crockett and Gail Grigsby             | Jerome Falk, Jr. and Nancy Falk            | Cynthia Gorney Sokol and William Sokol                                      | Anthony and Judith Hitchings              | Rosie and Scott Kane                      | Mary and Arnie Levine                     |
| Bernard R. Boudreaux                    | Chris and Lynn Crook                       | Pelly Fan                                  | Gottbehuet Reiner Fund  | Larry Hobel and Diana Staring             | Daniel Kane, Jr. and Silvia Sorell        | Charles and Edna Levine                   |
| Linda Braly and Kevin Wilson            | James Crook Jr. and David Harbison         | Paul and Colleen Farrell                   | Deborah L. Gould  | Wendy Hoben and Lydia Huang               | Ward and LeAnn Kanowsky                   | Ronnen and Lionel Levinson                |
| Lisa Braver Moss and Mark Moss          | Alex Dahlen                                | Rebecca Farrell                            | Leah and Logan Granger  | Alan Hobbesh and Kerry McLean             | Jane Kaplan and Donatello Bonato          | Matthew Levy                              |
| Nancy L. Breslin                        | Elizabeth Dalrymple and John Kelson        | Boris Fedorov                              | Ellen Greenberg and Duncan Watry  | William C. Hogan                          | The Kaplan Family                         | Barbara and Richard Lewczyk               |
| Joshua and Mary Bright                  | Chris and Karen Dalton                     | Michael and Maria Fein                     | Jeffrey and Judy Greenhouse   | Helen Holmlund                            | Katherine Kasameyer and Sarah Roberts     | Philip Lewenthal and Elizabeth Hack       |
| Rob and Marcea Brimmer                  | Barbara Darrow-Blake and Steve Blake       | Julia Feldman-Decoudreaux and David Burge  | Gordon Greenwood  | Kara Holzwarth                            | Elisabeth Kashner and Jonathan Stern      | Harold and Joan Lewis                     |
| Tina Broder                             | Lynn Davidian and Kent Cummings            | Mary and Sidney Ferguson                   | Julie B. Griffith   | Richard and Jeana Hopper                  | David and Muriel Kears                    | The Lewis Family                          |
| Heather Brown                           | Christine Dawson                           | David Finger and Sylvia Wikler-Finger      | Thomas and Gretchen Griswold  | Frances Houle and William Hinsberg        | Crystal Keene and Craig Todd              | Moses Libitzky and Susan Solomon-Libitzky |
| Jimmie Brown                            | Michael Dearing                            | Janine Firpo                               | Andrea Gross and Steve Herz   | Michael and Barbara Hoversen              | David and Muriel Kears                    | Igor Liskovets and Bianca Ling            |
| Nicole Brown-Graham and Ardis Graham    | Ruth Decker                                | Leonard Fisher and Risa Teitelbaum         | Melanie Grossheider-Monkowski and Adam Monkowski                            | Mark and Lynn Humphrey                    | Eileen Keller and Craig Williams          | Eric Lloyd                                |
| Mary Ellen Browning Memorial Trust Fund | Scott Denman                               | Michael and Sally Fitzhugh                 | Robert K. Grossman  | Jeffrey and Marilyn Hunt                  | Ellie and McClure Kelly                   | LMNRP Fund                                |
| Carla Buffington                        | Elissa J. Dennis                           | Bridget Flanagan and Peter Van der Naillen |   | Jen Hunt                                  | Kathleen Kelly                            | Manny and Heidi Lopez                     |
| Moti Bycel and Danielle Davidson        | Kathryn Dernham                            | Philip Flanner III and Janet Flanner       |   | Karen Hunt and Phillip Rayher             | Craig Kelso and Judith Roth Kelso         | Janet P. Lord                             |
| Barbara B. Caine                        | Pamela Dernham and Gregory Linden          | Emily Flynn and Matt O'Connell             |   |   | Michael Kent and Rebecca Rozen            | Marjorie Louis                            |
| Clay Campaigne                          | Nicholas and Nancy Kathryn deVries         | Jack L. Fong                               |   |   | Anthony Kesich                            | John Lowney                               |
| Steven Campbell                         | Jaspal and Reetinder Dhillon               | Doris J. Foster                            |   |   | Frank and Rosaline Kiang                  | Michael and Mary Lubin                    |
| The Campbell Family Fund                | Mary Dial                                  |  |   |   | Allen and Hannah King                     | Jana Luft                                 |

# FINANCIAL CONTRIBUTORS (CONTINUED)

|  |                                       |   |  |                                      |   |   |
|--|---------------------------------------|---|--|--------------------------------------|---|---|
| Charles and Christiana Macfarlane        | Sharon A. Mullen                      | Kevin Prindiville                         | Curtis Scribner                              | Jeff and Jennifer Tarn               | Catherine Whiteside and Peter Mikkelsen | Fredrick and Mary Wooster                 |
| Robert Mack and Bernadette Reiss         | James and Lindsey Murray              | Kathelijin and Jan Rabaey                 | Louise Sefton and Arlyn Johns                | Carolyn Tawasha and James Baldocchi  | Edwin and Ellen Whitman                 | Eric and Deborah Woychik                  |
| Nicole Maguire and Nate Byron            | John and Barbara Nagle                | Nicholas and Star Rabinowitz              | Peter Seidl and Karen Katz                   | Jennifer Taylor and Phillip Trujillo | Amy and Kirby Wilcox                    | Bobby Yearby Jr. and Robin Yearby         |
| Laura Mahanes and Steven Weissman        | David Nakamura                        | Henry Ralston and Patricia Litton         | Joseph V Selby                               | Ruthann and Carol Taylor             | Claudia Williams                        | June and Thomas Yee                       |
| Anna and Alex Makler                     | Laurie Nash                           | Michael and Susan Rancer                  | Martha Sellers and Luigi Semenzato           | Tiffany and Jerreeau Taylor          | Crystal Williams                        | Derek and Jill Yegian                     |
| Laura N. Malik                           | Wally Naylor                          | Victor Rauch and Ingrid Madsen            | Stephen Senter and Deborah Hurst Senter      | Michelle Taymuree                    | Sean C. Williamson                      | Olujimi Yoloye and Sharon Anderson-Yoloye |
| Thomas Malone and Katrina Shelton-Malone | Robin and James Nebel                 | Richard Raushenbush and Barbara Giuffre   | Emily Sexton                                 | Cora M. Tellez                       | Bobbie and John Wilson                  | Aaron S. Young                            |
| Marc Manason                             | Melissa Nelken and Ronald Lee         | James M. Redovian                         | Andrea and Neal Shabashov                    | Deirdre A. Terry                     | Karlene Wilson                          | Robert Youngs and Susan Cohen             |
| Steven Mandelberg                        | Nepheli Foundation                    | Mark E. Reilly                            | Marjorie Shapiro and Ian Hinchliffe          | Elizabeth Thagard                    | Edward and Hazel Winslow                | Charles and Jane Zaloudek                 |
| Judith Margulis Ph.D. and Jeffrey Kessel | Ron Nestor                            | Renewal by Andersen                       | Amalia Shedro                                | Jill M. Thayer                       | Jacqueline Wnukowski                    | Steve Zieff and R. Elaine Leitner         |
| R. Thomas Martell                        | Mark Nevins and Joyce Pardo Nevins    | Ronald and Mary Rettig-Zucchi             | Deborah S. Shefler                           | Brady Thomas                         | Judith H. Wofsy                         |   |
| Lillian Martin                           | Karl Nichols and Sherry Hu-Nichols    | Edward M. Reyes                           | Aamir Sheikh                                 | Matthew Thomas                       | John and Lisa Wolf                      |   |
| Margaret L. Mathias                      | Anna Nomura and Josh McKeever         | James and Ruth Reynolds                   | Cynthia Shen                                 | Robert B. Thompson                   | Charles Wollenberg                      |   |
| Laura D. Mattos                          | Colleen Noonan                        | Kim and Steve Richardson                  | William and Judith Sherry                    | TIAA Charitable                      | Nicole Wong and Edward Dua              |   |
| Elizabeth McClellan                      | Marianne O'Connell                    | Nicholas Riegels and Nardine Saad-Riegels | Makiko Shinoda                               | Patricia Tokunaga and Jeffrey Moad   | John Woo                                |   |
| Mara McClellan                           | Ann M. O'Connor                       | Trygve Ristroph                           | Patrick and Betty Shinoda                    | Robert and Judith Toll               | Jennifer Woolf and James McCarrick      |   |
| Charles and Carol McCullough             | Richard O'Donnell                     | George and JoAnne Robb                    | Sara Shnider                                 | Oleg A. Tomashevsky                  |   |   |
| Ray and Stephanie McFadden               | Nicole Offerdahl                      | Richard and Nancy Robbins                 | Greg and Susan Sickal                        | Robert Townsend                      |   |   |
| Kathleen McGovern and Michael Daly       | Claire Oldani                         | Nancy J. Roche                            | Jonathan and Sarah Simon                     | Tom and Mindy Trinh                  |   |   |
| John and Karen McGuinn                   | Dina Older Aguilar and Samuel Libow   | Amnon and Katie Rodan                     | Gurmeet Singh and Gurjit Kaur                | Charles K. Tuomainen                 |   |   |
| Robert and Marilyn McKenzie              | Kristina Omari                        | Peter Roeper and Martha Harnly            | Maureen Sirhall and Richard Rogers           | Alana Turner                         |   |   |
| Charles McKinley and Martha Schaffer     | Barbara O'Neal and Patrick Alvarez    | Heli Roiha and Terry McKelvey             | Gail L. Skoff                                | John Turner and Allison Pratt        |   |   |
| Bruce and Barbara McLeod                 | David and Mary O'Neill                | Ursula Rolfe and Monroe Strickberger      | Mark Sloan                                   | Michael Ubell and Paula Hawthorn     |   |   |
| Thomas McMahan                           | The Sally Outis Memorial Fund         | Elaine Rosenthal                          | Nancy Smith                                  | Lin Ure Cheyer and Adam Cheyer       |   |   |
| Kathleen Meagher and Harvey Sohnen       | Bruce and Merrill Owen                | Martin Rosenthal and Patricia James       | Owen and Erma Smith                          | Melinda and Vahid Vahedi             |   |   |
| Vijay Mehrotra and Jennifer Black        | Anthony and Christine Pagano          | Lynne Royer and Bruce Saldinger           | Sylvia Smith and Stanley Kowalski            | Mary Ann Valdez                      |   |   |
| Vasanti Mehta                            | Ronda C. Park                         | Peter Rukin and Sharon Djemal             | Laurie A. Soman                              | Andrew And Kathleen Varlow           |   |   |
| Bryce Mendelsohn                         | Catherine Parkin and Maurice Mitchell | Teresa D. Russett                         | Scott and Ruth Spear                         | Brian and Barbara Vaughn             |   |   |
| Theresa and Mary Mendoza                 | Clarence and Nancy Parkison           | Joanne and Howard Ruud                    | Robert and Ann Spears                        | Eliza Veronda                        |   |   |
| Molly Mentzer                            | Manjulaben Patel                      | Francis Ryan and Judith Levitan           | Beth A. Spease                               | Joy Villafranca and Scott Wikstrom   |   |   |
| Daniel Miller                            | Steven and Cherie Jo Patenaude        | Jean Ryan                                 | Sarah Stadler and Zach Cowan                 | Luke Wachter                         |   |   |
| Larry Miller and Mary Kelly              | Jeffrey Pector and Shelley Coppock    | Thomas Sager and Eugenie Scott            | Matthew Steele                               | Joan and Jon Wactor                  |   |   |
| Gregory and Patricia Mintz               | Peter Pervere and Georgia Cassel      | Gunnar E. Salumaa                         | Philip and Jean Stein                        | Harvey and Leslie Wagner             |   |   |
| Witt Monts and Lily Shih                 | Ethan Petersen and Carmalyn Lubawy    | Lauren Salvo                              | Mary E. Stephens                             | Carol A. Walb                        |   |   |
| Carmen J. Moore Charitable Trust         | Chad Peterson                         | Anjali Samani                             | Enda and Philip Sterne                       | Germaine LaBerge                     |   |   |
| John and Janet Moore                     | Caroline and Craig Peterson           | Devin Sandoz and Lisa Fotheringham        | Joel and Ellen Stettner                      | Gail Wallace and Francois Korn       |   |   |
| G. Robert Morris and Carole Lowenberg    | John and Sharon Piekarski             | Carol Savio                               | Michele Stillwell-Parvensky and Ryan Tierney | Thomas and Winifred Walters          |   |   |
| Jeffrey and Simona Morris                | Yuliy Pisetsky                        | William and Susan Scalice                 | Beth Strachan and Dan Neuschaefer            | Shally Wang                          |   |   |
| Kris Morrow                              | William J. Pitz                       | George Scharffenberger                    | Rune Stromsness                              | Eric W. Wasiolek                     |   |   |
| Moses Family Charitable Fund             | Dorothy Ponton and Erik Scheelke      | Peter Scheibel                            | John and Donna Strugar-Fritsch               | Peter and Michelle Weeks             |   |   |
| Andrew and Mary Moyce                    | Claire Potstada                       | Steven Schiller and Kristine Kaiser       | Maxim Sulimov                                | Anne Weills and Daniel Siegel        |   |   |
| James and Margaret Moyers                | Warren and Jane Pottebaum             | Susan Schwartz                            | The Honorable John Sutter and Elouise Sutter | Timothy Wendt and Mary Solecki       |   |   |
|  |                                       | Mark and Susan Schynert                   | Odessa Sutton                                | Bonnie and Scott Wentworth           |   |   |
|  |                                       |   | Nancy S. Sweetland                           | Charles and Annelle Westbrook        |   |   |
|  |                                       |   | Max and Barbara Tabak                        | Brett A. White                       |   |   |

## VIRTUAL FOOD DRIVE

*The Food Bank appreciates donations of any amount. Due to space limitations, only the top 25 virtual drives are listed.*

C510 East Bay Dirt Classic  
 4D Molecular Therapeutics  
 Alameda County  
 Albany Responds Covid-19  
 Alta Bates Summit Medical Center  
 Compass Real Estate-Easy Bay  
 Cornerstone Sf 24 Hour Challenge  
 Cub Scout Pack 1015  
 e.l.f. Cosmetics  
 Edison Elementary  
 Five9 Women in Tech San Ramon  
 Kaiser Permanente Division of Research  
 Keller Williams Alameda, Castro Valley, Oakland  
 Lam Research  
 Lennon's Virtual Food Drive  
 Mark's 50th Challenge  
 Molecular Foundry At Berkeley Lab  
 Palo Alto Alumni Kappa Alpha Psi  
 Piedmont High School  
 PUSD Elementary Schools  
 Quiring General, Llc  
 Revance Therapeutics, Inc  
 Simpson Strong- The Home Office  
 Softbank Group  
 Wilson Sonsini- EBCE Fundraising Drive



## FOOD DRIVE PARTICIPANTS

Due to space limitations, this list reflects the top ten food donors (listed alphabetically) for each food drive initiative during FY20.

### General / Year Round Drives

Berkeley Bowl  
Castro Valley Library  
Alameda County, Public Works  
Meeta Vyas  
Dublin Library  
Cape and Cowl Comics  
Fremont Main Library  
Alameda County, Information Technology Department  
Alameda County, SSA Enterprise Office

### High Holy Days

Temple Sinai  
Temple Beth Abraham  
Kehilla Community Synagogue  
Congregation Beth El  
Congregation Netivot Shalom  
Temple Beth Torah  
Temple Beth Shalom  
Chochmat HaLev

### Holiday

Office Depot  
Remaxx Accord, Castro Valley  
ACE USA/ESIS Inc.  
East Bay BMW  
Martin Luther King Jr. Middle School  
Gene's Fine Foods  
San Lorenzo Japanese Christian Church  
United Brokers Real Estate  
Lam Research  
Grace Bible Church

### School

Quarry Lane School, Tassajara Road  
Stratford School, Osgood Rd.  
Castro Valley High School  
Lea's Christian School  
Stratford School, Pleasanton  
St. Mary's College High School  
California School for the Deaf  
St. Leander School  
Albany High School  
Dougherty Elementary School

### Summer

Alameda County Fair Food Drive Day  
Workday  
USDA FSIS OFO  
Social Security Administration, San Leandro  
Social Security Administration, Hayward  
Crunch  
Fortune Builders  
Mukerjee Annual Food Drive  
Social Security Administration, Fremont  
Oakland Acupuncture Project

## CORPORATE FOOD DONORS

The Food Bank greatly appreciates all food donations. Due to space limitations, only donations of 10,000 pounds or more are listed.

ALBERTSONS LLC  
Amazon Prime Now  
Amazon.Com  
Amy's Kitchen, Inc.  
Anchor Distributing  
Armanino Foods  
Bay Cities Produce  
Berkeley Farms  
Bimbo Bakery Depot  
Bluestar Refreshment Services  
Canteen Corporation  
Clif Bar, Inc.  
CN Frozen Foods  
Columbus Manufacturing  
Community Grains  
Core-Mark International II  
Dang Foods LLC  
Earl's Organic Produce  
EAT Club  
Food Finders  
Foods Co - Store #534  
Forager Project LLC  
Fra' Mani Handcrafted Meats (Fra' Mani Salumi)  
Geopak Naturally LLC  
Girl Scouts Of NorCal  
Greenleaf  
Grocery Outlet - Home Office  
Harvest Food Products Co., Inc  
Hello Fresh  
Hendrick Automotive Group  
Impossible Foods Inc.  
Joel & Patty Weinstein  
La Terra Fina USA  
League of Volunteers  
Lucky California  
Marin Sun Farms / Mindful Meats  
McCormick & Company, Inc.

Mi Rancho Tortilla Factory  
Newport Meat Northern CA  
Nona Lim  
Organic Spices Inc.  
OXIGEN Beverages USA Inc.  
Pathwater  
Peet's Coffee & Tea  
Performance Foodservice  
Petit Pot  
Pitco Foods  
Premier Nutrition Corporation  
Progeny Coffee LLC  
Purity Organic  
RALEYS  
Render Foods LLC  
Revolution Foods  
Safeway Inc.  
Safeway Milk Plant  
Salesforce  
Savory Creations  
Seaside Refrigerated Transport  
Semifreddi's Bakery  
Social Good Fund 501c3 (AKA: Give With Lily)  
Southwest Airlines  
Sugar Bowl Bakery  
Sukhi's Gourmet Indian Foods  
Suzimix Inc.  
Sysco Corporation  
The Church Of Jesus Christ Of Latter-Day Saints  
Triunfo Foods  
U.S. Foodservice Inc.  
U.S. Trading Co.  
Vicolo Wholesale  
Vistar/VSA (Multi-Foods)  
Whole Foods Market (Distribution Center)  
World's Best Cheeses West Inc.

## LEGACY GIFTS

The Food Bank is truly grateful to those who have pledged support for the future of our mission through a legacy gift. The following generous individuals have joined our **Will to End Hunger** legacy society by committing to fuel our efforts for generations to come.

Wayne Ainsworth and Elizabeth Yagle  
Roger Anderson and Joanne Lombardi  
Jeffrey Angell and Joan King-Angell  
Lee Aurich and Helen Hutchison  
Dan Barki  
Anna C. Barnard and Belinda Stradley  
Suzan and John Bateson  
Anne and Michael Becker  
Toby C. Berger  
Gloria L. Bowles  
Gretchen B. Brosius  
Donald E. Buchholz  
Trent Byle and Andrea Robinson  
Phyllis Calechman  
Alfred and Sharon Camisa  
Sharyn Carroll  
Harry Chomsky and Amy Apel  
Susan F. Ciriclio  
Sally E. Clausen  
Robin D. Compton  
Margaret Cornwall  
Florence Culp  
Anne Curran  
Barbara Darrow-Blake and Steve Blake  
Deena Davis and Mordechai Olcha  
Yetta and Thomas DeHart  
Valerie Doyle  
Elena D. Duplessis  
Natalie S. Elkind  
Anjali Englund  
Dana Fox  
Joan Gorrell  
Chia W. Hamilton  
Aileen Herrmann  
Leigh Illion  
Shirley A. Jowell  
Robert Kaiser and Lois Snow  
Bridget Keenan  
David P. Kramer  
Mae O. Liu  
Donald L. Mack  
Vicki Martinson  
Mary and Keith McAllister  
Robert McCarrick  
Scott and Ingrid Mealer  
Stephen and Emily Mendel  
Gregory and Patricia Mintz

Ted and Jacqueline Monk  
Norma M. Mosley-Lampley  
Richard and Carrie Motamedi  
Clifford Nakamoto, D.D.S. and Betty Nakamoto  
Marianne Noland  
Nancy J. Novick  
Antonio and Amparo Ozuna, Jr.  
Rick Patterson  
Gladys Perez-Mendez  
Elizabeth Pigford  
Jeanette Marie Pontacq  
Virginia S. Preston  
Bernadette Raftery  
Michael and Susan Rancer  
Wayne A. Rebiejo  
James and Ruth Reynolds  
Elizabeth Rinehart  
Barbara Ritz  
Abelardo Rosas  
Sandra Rosenberg  
P. K. Rountree  
Allen A. Rusk  
Marguerite A. Ryan  
Roussel Sargent  
Beth and David Sawi  
Dan Scarola  
Leonard Schwab and Rita Brenner  
Paulette Setzer and William Whitehead  
Narayandas Shah  
Andrea Shabashob  
Patrice and David Shiluk  
Susan Simpson and Steve Crimi  
Maureen Sirhall and Richard Rogers  
Nicole Slaughter  
Teresa Sloop  
Toshi T. Suzuki  
Ying Mei Tcheou and Jack Cunningham  
Sharon Toth  
Marlene Vogelsang  
Keith and Andrea Vinson  
Watson Trust at the East Bay Community Foundation  
Kim Wayne  
C. Searle Whitney  
Dawn and Steven Willoughby  
Nance Wilson and Clifton Schor  
Jurek and Dain Zarzycki  
Ami and David Zusman

**Note:** Due to the COVID-19 pandemic, there is no data for the LETTER CARRIERS FOOD DRIVE or LENTEN FOOD DRIVE

**94% of all donations goes directly to our programs (includes in-kind donations)**

If you have named ACCFB in your estate plans and have not yet informed us, or if you are interested in learning about legacy gifts and our **Will to End Hunger** legacy society, please contact Anjali Englund, Major Gifts Officer, at 1-510-875-7845.

## THANK YOU TO OUR COVID-19 EMERGENCY RESPONSE PARTNERS

|   |                                       |
|---|---------------------------------------|
| Alameda County                          | Hayward Unified                       |
| Alameda County Fairgrounds              | Livermore Unified                     |
| Alameda County Public Health Department | Lyft                                  |
| Alameda County Sheriff                  | New Haven Unified                     |
| Alameda Unified                         | Oakland Unified                       |
| Albany Unified                          | Oaklandish                            |
| Amazon                                  | Pleasanton Unified                    |
| Berkeley Unified                        | Prologis                              |
| California Conservation Corps           | Raymond Handling Concepts Corporation |
| California State Guard                  | San Leandro Unified                   |
| Castro Valley Unified                   | San Lorenzo Unified                   |
| Chabot College                          | Task Rabbit                           |
| City of Hayward                         | The Red Cross                         |
| City of Oakland                         | TriCity Volunteers                    |
| City of San Leandro                     | Uber                                  |
| Civicorps                               | Union City Unified                    |
| Civil Air Patrol                        | Wells Fargo                           |
| Emeryville Unified                      |                                       |
| Fremont Unified                         |                                       |

## FOOD RECOVERY PROGRAM DONORS

*The Food Bank greatly appreciates all food donations. Due to space limitations, only donations of 5,000 pounds or more are listed.*

|                          |                        |
|--------------------------|------------------------|
| Arizmendi Bakery         | Raley's                |
| Berkeley Natural Grocery | Safeway                |
| Big Lots!                | Smart & Final          |
| Byte Foods               | Sprouts Farmers Market |
| Smart FoodService        | Target                 |
| Costco                   | A Taste of Denmark     |
| Crafty Delivers          | Thistle                |
| Food Maxx                | Trader Joe's           |
| Foods Co.                | Walmart                |
| Jetro Cash & Carry       | Whole Foods            |
| Lucky                    |                        |

## IN-KIND DONORS

Beijing One Heart Sphere Charity Foundation  
 Marcy and Jef Billetter  
 Buddhist Tzu Chi Foundation  
 Julia G. Burch  
 California Association of Food Banks  
 Cholita Linda  
 Congregation Beth Emek  
 Consulate General of the People's Republic of China in San Francisco  
 Andrew Cramer  
 DHR Investment Counsel, Inc  
 Diablo Publications  
 Ruth Foresler  
 Gap Inc.  
 Girl Scouts of Northern California  
 Julie A. Hollinger  
 Shannon Lee-Rutherford and Damien Resch  
 Media Matters SF, LLC  
 MVP Visuals  
 OSIssoft  
 Papé Material Handling  
 Peet's Coffee & Tea  
 Raymond Handling Concepts Corporation  
 Reyes Holdings  
 Roplast Industries  
 Serpico Landscaping, Inc.  
 Smart & Final #401  
 Spire Solutions  
 Sutter Oakland Cardiology  
 Sharon and Cimarron Taylor  
 TransPak  
 Mark Turgeon  
 Le Nguyen Vuong My and Michael Strauss  
 Workday Foundation

## THANKS TO OUR LEADING CORPORATE PARTNERS



For fourteen consecutive years, the Food Bank has been awarded Charity Navigator's highest rating — Four Stars — ranking us among the **top 1 percent** of charities nationwide.



# FINANCIAL STATEMENTS

## Statement of Financial Position

(As of June 30, 2020)

### ASSETS

|                                     |                     |
|-------------------------------------|---------------------|
| Cash and marketable securities      | 33,542,743          |
| Grants receivable                   | 2,313,167           |
| Promises to give                    | 1,518,857           |
| Program revenue & other receivables | 92,818              |
| Inventory (Note 1)                  | 2,090,325           |
| Prepaid expenses and deposits       | 290,200             |
| Property and equipment, net         | 10,296,667          |
| <b>Total Assets</b>                 | <b>\$50,144,776</b> |

### LIABILITIES AND NET ASSETS

#### Liabilities

|                              |                    |
|------------------------------|--------------------|
| Accounts payable             | 998,525            |
| Accrued compensated absences | 501,857            |
| Deferred revenue             | 57,331             |
| Loan payable                 | 1,467,100          |
| <b>Total Liabilities</b>     | <b>\$3,024,813</b> |

#### Net Assets

|   |                     |
|---|---------------------|
| Unrestricted                            | 1,000,000           |
| Board-designated net assets             | 43,677,032          |
| Donor restricted                        | 2,442,931           |
| <b>Total Net Assets</b>                 | <b>\$47,119,963</b> |
| <b>Total Liabilities and Net Assets</b> | <b>\$50,144,776</b> |

### CHANGE IN NET ASSETS

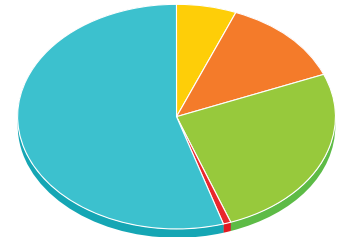
|  |                     |
|--|---------------------|
| Change in net assets, operating (Note 2) | 22,969,684          |
| Unrealized loss on investments           | (1,478)             |
| Net donor restricted revenue             | (699,902)           |
| Net assets, beginning of year            | 24,851,659          |
| <b>Net assets, end of year</b>           | <b>\$47,119,963</b> |

## Statement of Operating Activities

(Year ended June 30, 2020)

### ANNUAL SUPPORT AND REVENUE

|                                  |                      |
|----------------------------------|----------------------|
| Government revenue               | 6,255,474            |
| Foundation and corporate giving  | 13,119,753           |
| Individual contributions         | 25,521,954           |
| Special events contributions     | 756,176              |
| Program revenue                  | 556,623              |
| Interest and other               | 253,955              |
| Donated commodities              | 56,262,344           |
| <b>Total Support and Revenue</b> | <b>\$102,726,280</b> |



### ANNUAL OPERATING EXPENSES

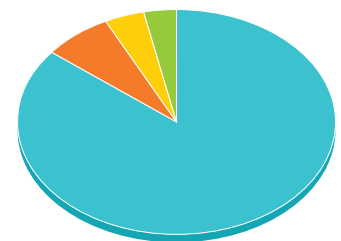
#### Program Services

|   |            |
|---|------------|
| Food distribution (Note 2)  | 68,301,586 |
| Nutrition education, hunger education, community outreach, research, volunteer training | 5,597,653  |

#### Supporting Services

|                                  |           |
|----------------------------------|-----------|
| Resource development/fundraising | 3,214,699 |
| Management and general           | 2,642,658 |

**Total Expenses** **\$79,756,596**



**Note 1:** Feeding America, the national food bank network, in FY20 valued donated food commodities at \$1.74 per pound and USDA food commodities at \$1.49 per pound.

**Note 2:** The Food Bank recognizes donated and USDA commodities as a contribution and resulting inventory. The increase in net assets is primarily due to increases in donations in response to the pandemic and is designated to cover costs associated with related increase in community need.

Hard copies of the annual audit are available upon request; digital copies can be accessed on the **About Us** menu of our website, [accfb.org](http://accfb.org), under **Financials**. Every effort has been made to ensure the completeness and accuracy of the information contained in this report. Please contact our Development Department at 1-510-635-3663 ext. 336 with any corrections.





ALAMEDA COUNTY  
**COMMUNITY**  
FOOD BANK

7900 Edgewater Drive, Oakland, CA 94621  
1-510-635-3663 | [accfb.org](http://accfb.org)

MEMBER OF  
**FEEDING**  
AMERICA

