



ALAMEDA COUNTY
COMMUNITY
FOOD BANK

Until everyone's fed

ANNUAL REPORT

2020

A Tale of Two...Years

“It was the best of times, it was the worst of times...”

So goes Charles Dickens’ opening to *A Tale of Two Cities*. Cliché, perhaps. But, like all the superlatives and analogies used to describe 2020, it fits.

The 2020 we set out for was not the year we ultimately experienced. Commemorating our 35th anniversary and building toward bold strategic goals were interrupted to respond to the greatest crisis our community has ever faced.

This report tells the tale of the two distinct — yet inextricable — “years” during the 12 months of our FY20. While it wasn’t immediately evident, our work during the first half of the year was positioning us to respond to the second.

It was, of course, impossible to predict COVID — but its effects were predictable. We knew the hardest-impacted communities would be those we already helped — our own **research** released at the end of 2019 made that clear.

Our efforts in **racial equity** and **legislative advocacy** — acknowledging systemic causes of hunger bigger than one food bank alone can address — proved critical to our response.

And innovative programming — from **Food Recovery** to **CalFresh Outreach** — had been scaled, knowing the fragility of the government safety net and ACCFB’s role when that net fails.

The tsunami-like wave of need that appeared (you may recall) *ahead* of the health crisis was unprecedented. But we were ready to respond, thanks to 35 years of partnership, preparation, and passion...mixed with a certain scrappiness for which Alameda County is known.

Ironically, it turns out, a pandemic — which could have been a detour — proved to ignite an acceleration of our operation’s evolution.

Beyond “reporting” the progress of last year, this Annual Report charts the evolution.

Thank you for your amazing help in making this body of work possible.



Board of Directors

Officers

- Beth Strachan, Chair, Metropolitan Group
- Robert Andersen, Vice Chair, Xperi Corporation
- Sayed Darwish, Secretary, McAfee
- Robin Nebel, Treasurer, Drake’s Brewing Company (Retired)
- Sara Webber, Network Chairperson, Berkeley Food Network

Members

- Dawn Willoughby (Past Chair), Innovation and Strategy
- C.J. Bhalla, Kaiser Permanente Northern Region
- Ruben E. Canedo, UC Berkeley
- Ian Castille, Capital Advantage, Inc.
- Danielle Coleman, VMware, Inc.
- Shannon Datcher, Blue Shield of California
- Chris Gaither, Executive Coach
- Krista Lucchesi, Mercy Brown Bag Program
- Chuck Reinhard, Ernst and Young LLP
- Eric Reynolds, The Clorox Company
- Tiffany Taylor, Genentech

This list reflects board membership and affiliations for fiscal year ending June 30, 2020.

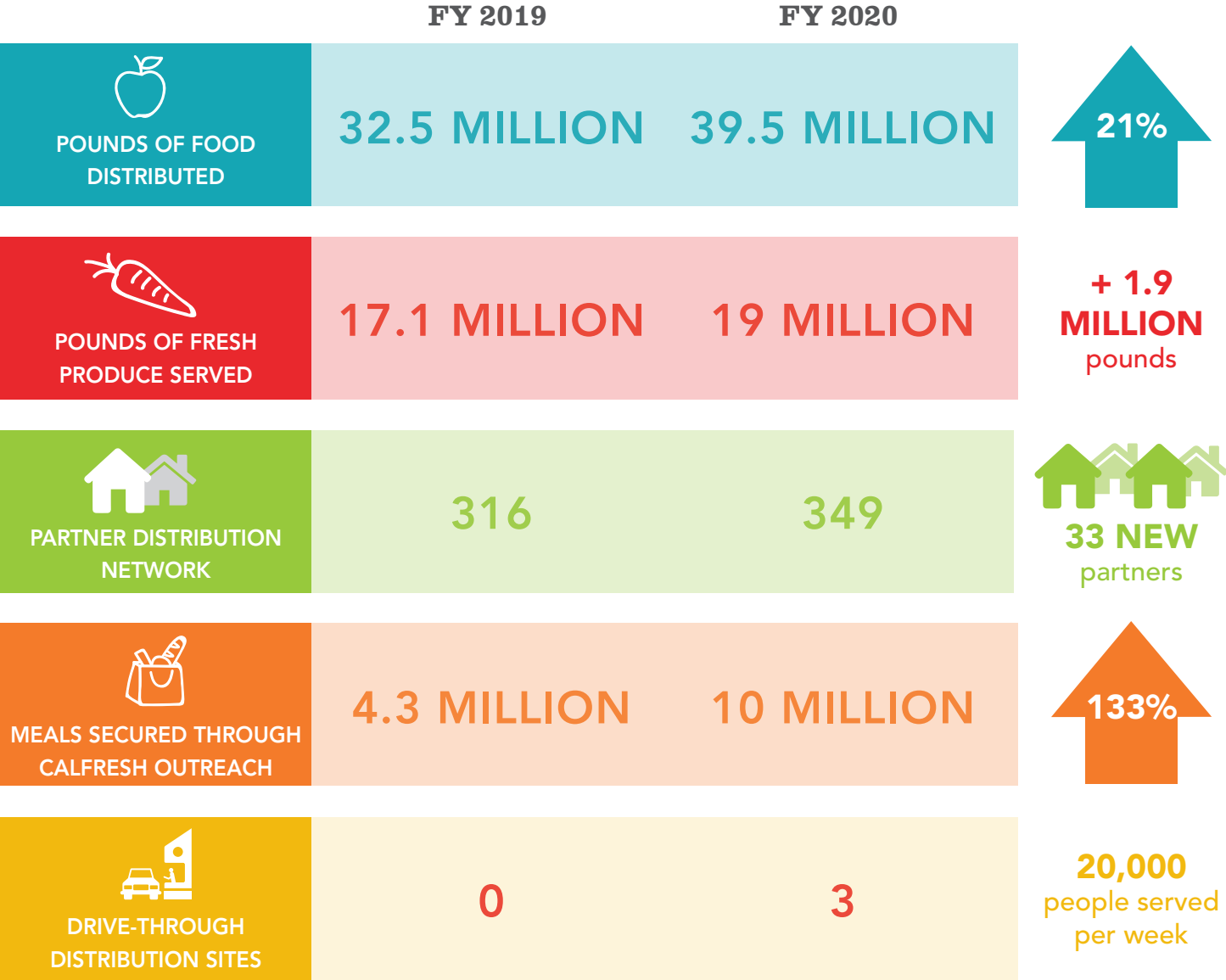


Suzan Bateson
Executive Director



Beth Strachan
Chair, Board of Directors

FY 2020 AT-A-GLANCE



FACT: By April 2020 we estimate that 50% of the County was experiencing some level of food insecurity.

OUR MISSION: Alameda County Community Food Bank passionately pursues a hunger-free community
OUR VISION: Children, adults, and seniors of Alameda County do not worry about where their next meal is coming from

GROUND BREAKING HUNGER RESEARCH

Knowledge is power, especially in the fight against hunger.

With support from the Stupski Foundation, we worked with the Urban Institute to improve our understanding of the risk for food insecurity and associated stressors across Alameda County.

The year-long study is one of the most in-depth assessments ever done on food insecurity and unmet need for services. The findings made front-page news for underscoring the unique demographics of Bay Area residents who face hunger. Among the findings: Alameda County residents facing food insecurity were substantially younger, more

educated, and more likely to be married with children than the general U.S. population. And, importantly, they are more likely to earn too much to qualify for government benefits.

Our research in FY20 also helped further our racial equity work and informed our early-response COVID relief efforts. With a firm understanding of the most vulnerable geographies and demographics — often a result of legacies of policies that disproportionately affect People of Color — we were able to quickly allocate resources, develop community partnerships, and open new distributions that were critical to our emergency response efforts.

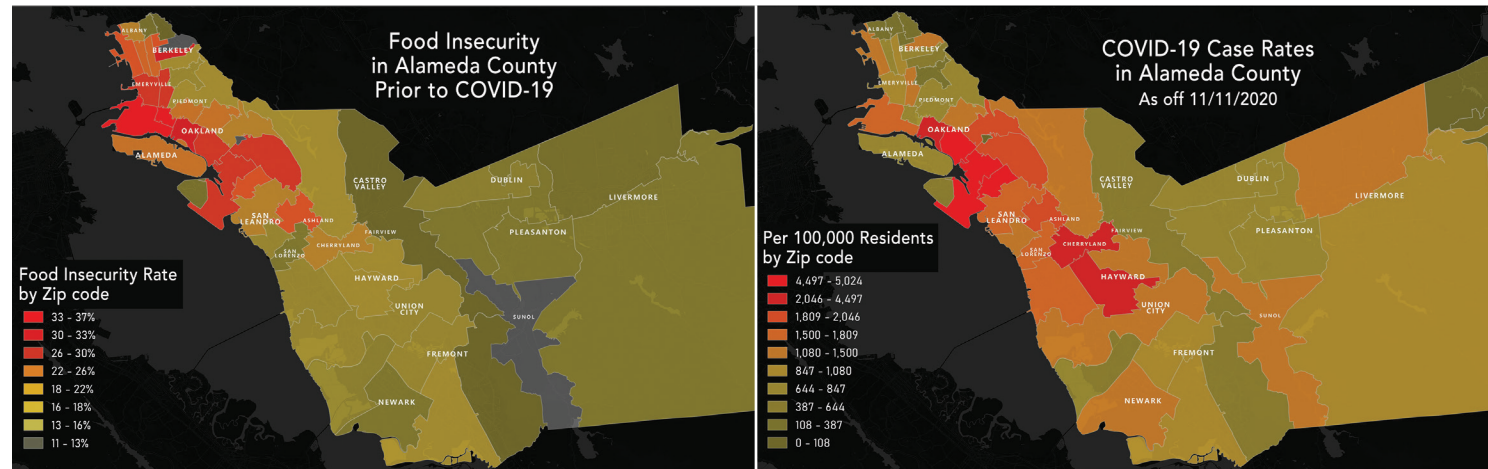
A POLICY WIN FOR THE AGES

For those of us who are food insecure, access to CalFresh (aka food stamps) makes a huge difference. It wasn't until the beginning of FY20, though, that nearly 50,000 of the most vulnerable people in our community were eligible for this essential anti-hunger program.

Extending CalFresh benefits to California residents who live on Supplemental Security Income (SSI) has long been at the top of our legislative priorities. And after a decade of partnership with a statewide coalition of advocates to lobby the state government, we finally prevailed.

The impact of this expansion was enormous: the equivalent of 8.5 million meals for low-income seniors and people with disabilities in FY20.

We know the pandemic has caused even more people to rely on social safety nets, especially CalFresh. Because of this expansion, thousands of us can shop for healthy groceries and save money for other basic needs.



Data – like these maps – showing the overlap between COVID-19 and food insecurity have been instrumental to informing our response to the pandemic.





ENSURING AN ACCURATE CENSUS

The U.S. Census plays a huge role in our mission. A complete and accurate count is critical to the funding Alameda County receives for services, including hunger relief.

That's why in FY20, we partnered with the County of Alameda to help educate, promote, and encourage everyone to complete the Census.

Through the County's phone banking operation, ACCFB volunteers made 2,700 calls to historically undercounted communities. We distributed multi-lingual Census fliers in 205,000 of our Emergency Food Bags. And we assisted 1,900 clients in completing the Census through our Emergency Food Helpline.

These efforts paid off. Our County's response rate was 75.8% — an estimated 84,000 response improvement from 2010. For every person not counted, our County misses out on \$2,000 per year for 10 years. This increased response rate means more funding for our community and local government to address critical needs.



FIGHTING WASTE...PROVIDING FOOD

When it comes to healthy food, we believe it should be eaten — not wasted.

As the largest food recovery organization in Alameda County, we have spent the better part of the last decade building our Food Recovery Program (FRP) to reduce waste and provide more meals for our community. FRP partners with more than 100 retailers countywide to collect millions of pounds of food surplus, **recovering nearly 4.7 million pounds of healthy food in FY20.**

However, expanding this critical program requires new resources.

With funding from CalRecycle, secured by Waste Management of Alameda County, we added a new hybrid truck to the program. When operating at full capacity, this truck will help us provide more than **830,000 additional meals every year for residents at risk of or experiencing hunger.**

And meals are just part of the story. We estimate the food redirected to neighbors' tables through FRP last year had the environmental impact of taking 450 cars off Bay Area roads for a year.



A Community in Crisis: Responding to COVID-19

A 1,000% increase in calls to our Emergency Food Helpline. Record high unemployment. School closures. A need for food assistance like we've never experienced before. The COVID-19 pandemic changed nearly every aspect of our work. The following timeline is just a glimpse into our response efforts during the first four months of this unprecedented event.



KEEPING CHILDREN – AND THEIR FAMILIES – NOURISHED

Of all the questions that arose from COVID-19 and the shelter-in-place, few had as immediate an impact as this one: “What will school closures mean for our children?”

Children have always made up the largest single population we help, and schools have long been critical partners in our work. With schools closing in March, tens of thousands of households were at risk of losing access to healthy food. However, thanks to an outpouring of generosity — and compassionate partners — we helped ensure

these families had reliable access to nutrition even when their children couldn’t be in class.

From the first moment of the shelter-in-place order, partners like the Eat. Learn. Play. Foundation and the Oakland A’s (among countless others) stepped up to help us partner with 11 school districts across the county — including 12 schools within Oakland Unified School District alone. By the end of June, we had provided more than 900,000 meals through these school partnerships.

A NEW FOOD BANK ESSENTIAL: DRIVE-THROUGH DISTRIBUTIONS

The stark images appeared within weeks of the pandemic beginning: Endless lines of cars, in every corner of the nation, waiting — often for hours at a time — for a box of emergency food.

Contactless drive-through food distributions like these quickly became a vital part of our response efforts — for both their safety and efficiency. People pull up their cars, pop their trunks, and masked volunteers place groceries inside.

In partnership with the County of Alameda, our first drive-through in Oakland opened in March,

serving just 28 cars. That quickly grew to 1,000 cars, three days a week. Soon, we set up similar drive-throughs in Hayward and Pleasanton. And by the end of June, the three distributions had collectively provided 1.2 million meals to more than 62,000 families.

This drive-through model quickly became a critical means for our partner agencies as well, for which we offered guidance and training. In some cases, drive-through distributions helped agencies double or even triple the amount of food they provided.

HOMEBOUND, NOT HUNGRY

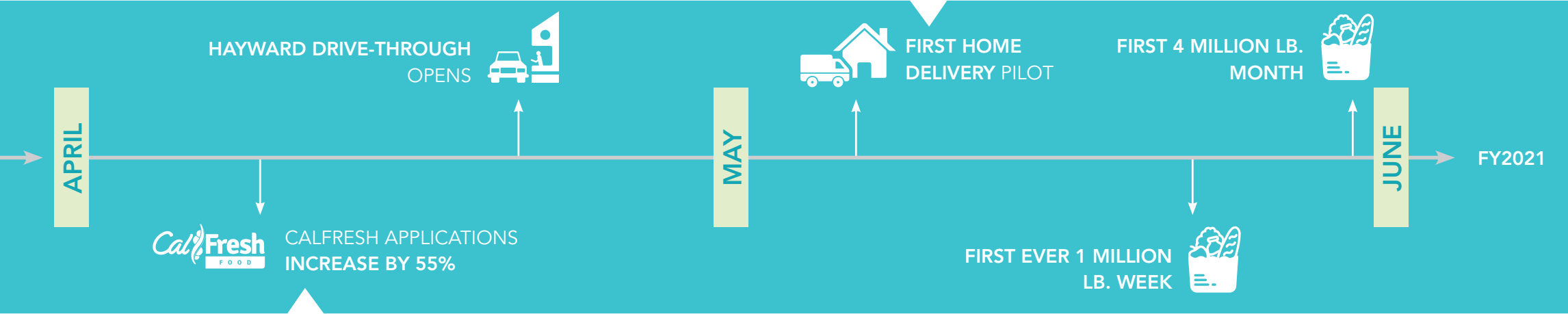
COVID-19 presented new challenges nearly every day. One of the biggest was how to help vulnerable — or even quarantined — households who could not make trips to grocery stores or emergency food distributions.

Central to this response was the need to further support partner agencies in the expansion of home delivery programs. Mercy Brown Bag, one of our largest senior-

serving and home delivery partners, expanded its role during the pandemic — both through its own efforts and in the development of Oakland at Risk, which paired homebound seniors with volunteers to help with various tasks, including food pickup.

We also partnered on several pilot programs to directly deliver healthy groceries to people who

were quarantined because of COVID-19 and neighbors most at risk — including individuals who are homebound and adults with disabilities. These programs, in partnership with TaskRabbit, Amazon Flex, and Alameda County Public Health Department, made contactless deliveries to nearly 7,000 households by the end of June.



CALLING ON CALFRESH

Our CalFresh (food stamps) outreach department started 17 years ago and has long been a blueprint for similar programs nationwide. Among the biggest roadblocks for prospective clients seeking CalFresh was often the first step: getting to our office for application assistance. And that was *before* the pandemic.

With COVID making it unsafe to host in-person application assistance meetings, we partnered with Alameda County Social Services Agency — with support from the Kaiser Foundation — to pilot CalFresh

application assistance over the phone.

When the shelter-in-place order began, we hit the ground running to safely assist clients by phone, exclusively, for the first time in our program's history. Despite unprecedented demand — and the same staff size to meet it — this 3-month pilot proved that we could provide the same quality support clients need without meeting in person. Through innovation and nimbleness, we assisted 7,323 clients with CalFresh applications in FY20, an all-time high.

A new normal

By the end of June 2020, the Alameda County Community Food Bank of 2019 was hardly recognizable relative to the organization we'd become. Our programs and operations teams hired multiple staff to keep up with increased need. We were distributing 65% more food and had added 30 new distribution partners.

The immediate goal was to ensure our community could emerge from this pandemic nourished and as vibrant as ever. However, we also know this evolution over the four months from March to June was just the beginning of the organization we are to become, for the foreseeable future.

FINANCIAL CONTRIBUTORS

The Food Bank greatly appreciates donations of any amount. Due to space limitations, FY20 donations of \$2,500 or more are listed. *Indicates donor is deceased.

Foundations \$500,000 + Eat. Learn. Play. Foundation Stupski Foundation \$100,000 - \$499,999 Charles and Helen Schwab Foundation The Crescent Porter Hale Foundation Evelyn and Walter Haas, Jr. Fund Feeding America First 5 Alameda County: Every Child Counts Hellman Foundation Jeff Bezos Foundation Sergey Brin Family Foundation Sobrato Family Foundation Sunlight Giving Tipping Point Community Wayne and Gladys Valley Foundation William G. Gilmore Foundation William G. Irwin Charity Foundation \$50,000 - \$99,999 George H. Sandy Foundation Kapor Center for Social Impact Kenneth Rainin Foundation Koret Foundation The Morris Stulsaft Foundation The Patrick J. McGovern Foundation Schwab Charitable Fund made possible by the generosity of the Present Progressive Fund The San Francisco Foundation The Stocker Foundation Walter & Elise Haas Fund Jean and Lewis Wolff Family Foundation \$10,000 - \$24,999 Bill Graham Supporting Foundation C. Edward & Edith Strobel Trust Cleaves and Mae Rhea Foundation Danem Foundation	Donald and Carole Chaiken Foundation Edward Joseph Daly Foundation FThree Foundation Hilltop Foundation International Community Foundation Jay Pritzker Foundation Jewish Community Federation & Endowment Fund Kelly Foundation Morning Glory Family Foundation Pinpoint Foundation Sustainable Grant Making Partners Fund The California Wellness Foundation The James Irvine Foundation WHH Foundation Zalec Familian and Lilian Levinson Foundation \$5,000 - \$9,999 Birches Foundation, Inc. Eden Area Foundation The Lewis Greenwood Foundation Links for Life Foundation – California, Colliers International Ohana Foundation Y & H Soda Foundation \$2,500 - \$4,999 Hertelendy Foundation Surtman Foundation Businesses, Corporations & Corporate Foundations \$100,000 + Apple Bank of America Charitable Foundation Bayer Fund BlackRock, Inc. California HealthCare Foundation Chevron Corporation Chronicle Season of Sharing Fund The Clorox Company Foundation Delta Dental Plan of California	Gilead Sciences Google Kaiser Permanente Northern California Lam Research Corporation Oakland Athletics Community Fund Ross Stores Foundation Salesforce.com The Safeway Foundation The Safeway Foundation Jewish Community Federation & Endowment Fund Kelly Foundation Morning Glory Family Foundation Pinpoint Foundation Sustainable Grant Making Partners Fund The California Wellness Foundation The James Irvine Foundation WHH Foundation Zalec Familian and Lilian Levinson Foundation \$50,000 - \$99,000 California Association of Food Banks Everlaw, Inc. FedEx Services Illumina Corporate Foundation John Muir Medical Group Madden Charities, Inc. OSIsoft Target Corporation The Walt Disney Company Wells Fargo Whole Foods Market Wilbur Labs \$25,000 - \$49,999 Balyasny Asset Management L.P. Blue Shield of California Calpine Energy Solutions Costco e.I.f. Cosmetics East Bay Community Energy Enterprise Holdings Foundation Federal Reserve Bank - San Francisco John Muir Health Kazan McClain Partners' Foundation MUFG Union Bank Foundation Oracle Corporation Pacific Gas and Electric Company Patelco Credit Union Royal Coffee, Inc. Sandia National Laboratories ShopCore Properties Subaru of America, Inc. Sustainable Futures Fund Tyson Foods Walmart Foundation Workday Foundation	\$10,000 - \$24,999 1st United Credit Union Abbott Diabetes Care Alaska Airlines Boehringer Ingelheim Fremont, Inc. Brookfield Renewable Partners Cardenas Markets Foundation Cathay Bank Foundation Clif Bar Family Foundation DVD.com, a Netflix Company Four Twenty Seven Inc. GLENCORE Ltd. Hill & Company Communications Hormel Foods Corporation LaunchDarkly Lawrence Berkeley National Laboratory Magenta, Inc. Major League Baseball Matson Navigation Company McKinsey & Company The Morrison & Foerster Foundation Morrison & Foerster LLP Nordstrom Okta Piper Jaffray RBC Wealth Management Red Nose Day Fund Robert Half Internaitonal Inc. Save Mart Supermarkets Schnitzer Steel Industries, Inc. Nextsport NGP Capital Pacific Service Credit Union Pacific Union International Inc. Provident Credit Union Shartsis Friese LLP Simpson Strong-Tie Company Inc. SiriusXM St. George Spirits Sterling Health Services Streamlinevents Sysco Food Services of San Francisco Xperi Corporation	\$5,000 - \$9,999 4D Molecular Therapeutics, Inc Alameda Health System Anthem Foundation ARM, Inc. Bank of Marin Bloom Farms Blue Bottle Coffee Boxlunch Broadway Mechanical - Contractors, Inc Carpe Diem Partners Case Pacific Company Comerica Bank Deloitte & Touche LLP East Bay Newborn Specialists, Inc. Economy Lumber Company Ernst & Young Esqueleto First Federal Savings & Loan of San Rafael Fremont Bank Gibraltar Steel Industries Golden State Warriors Grocery Outlet Heffernan Foundation HMC Designing Futures Foundation Hugh Groman Catering and Greenleaf Platters JanSport Johnson & Johnson MAPFRE Insurance Moss Adams NeoFill Nestle Dreyer's Ice Cream Company Novartis Institute for Biomedical Research OUTFRONT Pete's Concrete Pumping Service Port of Oakland Progressive Asset Management, Inc. Prologis Protein Research Quality Glass, Inc. Richert Lumber Co. Inc Sarcina Industries LLC SiriusXM Smart Foodservice Subway Restaurant TPG Global, LLC Tinuiti (formerly Elite Sem)	TSNMI.com Tulloch Construction, Inc. The UPS Foundation Vistra Energy Wareham Development Waste Management of Alameda County Westcore Properties Zogenix Inc \$2,500 - \$4,999 Adelante Capital Management All World Gayatri Pariwar, U.S.A. American Brass & Iron Foundry AppDynamics, Inc. Barnaby Ltd LLC Cemex Chambers & Chambers Wine Merchants Check Point Software Corning Incorporated Foundation Crate & Barrel Dealey, Renton & Associates Greene Radovsky Maloney Share & Hennigh LLP Insperty Livermore Valley Craft Beer Foundation mailchimp The Marcus & Millichap Company Foundation Mascot Sports Medtronics Morgan Stanley Foundation NeoFill Nestle Dreyer's Ice Cream Company Novartis Institute for Biomedical Research OUTFRONT Pete's Concrete Pumping Service Port of Oakland Progressive Asset Management, Inc. Prologis Protein Research Quality Glass, Inc. Richert Lumber Co. Inc Sarcina Industries LLC SiriusXM Smart Foodservice Subway Restaurant TPG Global, LLC Tinuiti (formerly Elite Sem)	Varian Medical System Wilson Sonsini Religious & Community Organizations \$25,000 + Temple Sinai \$10,000 - \$24,999 Cornerstone Fellowship Congregation Beth Israel Lynnewood United Methodist Church \$5,000 - \$9,999 Anonymous Asbury United Methodist Church Congregation Beth-El Congregation Beth Israel Beth Jacob Congregation Kehilla Community Synagogue Lift Up National Association of Letter Carriers Rotary Club of Oakland #3 Skinner For Senate 2020 Temple Beth Abraham \$2,500 - \$4,999 Charities Aid Foundation of America City of The Lord Zion Community Health Center Network Congregation Beth Emek Congregation Nevitot Shalom First Congregational Church of Berkeley Humanity United Kiwanis Club of San Leandro Lakeshore Avenue Baptist Church Montclair Women's Club Park Day School Plumbers & Steamfitters Local 342 Rotary Club of San Leandro Saint Mary's College High School Soroptimist International of the East Bay Trinity Evangelical Lutheran Church
--	--	--	---	---	--	---

FINANCIAL CONTRIBUTORS (CONTINUED)

UCSF East Bay Department of Surgery University Bible Fellowship Individuals & Family Funds \$100,000 + Wayne Ainsworth and Elizabeth Yagle Anonymous (6) The Barbara and Gerson Bakar Foundation Diana Cohen and William Falik Pete and Amanda Docter Ann and John Doerr Gerald M. Kline Chris Larsen and Lyna Lam Magid Family Fund in memory of Albert and Marian Magid Beth and David Sawi Mark and Susan Stutzman \$50,000 - \$99,999 Anonymous (4) Anthony Bernhardt and Lynn Feintech Gordon Chaffee and Nancy Kedzierski Sayed and Elise Darwish Debra Farb and Eric Sippel Frances Hellman and Warren Breslau Rodan Family Foundation Geomar Foundation Semilla Fund Jennifer and Paul Vetter Virani Family Fund Kathryn and Robert Vizas \$25,000 - \$49,999 Tarang and Hirni Amin Anna Catherine Foundation Anonymous (4) Sandra and Paul Bonderson Buuck Family Foundation Matthew Cooper Mary Jane Dean Benedict and Mary Feinberg David and Melodie Graber Terri Hearsh Steve Heller and Therese Hickey Ishiyama Foundation Nancy C. Lenvin	Paul Markovich and Lisa Alumkal Stephen and Emily Mendel Michael and Karen Meryash Ivan and Maris Meyerson Mark Miller and Maggie Sin Joyce A. Milligan Mark Nienberg and Jody Zaitlin Gregory Pedemonte and Anne Wagley PM Schlein Family Foundation Carole C. Quan The Honorable Yvonne Gonzalez Rogers and Matthew Rogers Rochelle Shapell and Lorne Buchman William and Solveig Shearer L. Marc and Sargina Silvani Joanne Smyth and Paul Vartanian Daniel Stefek and Amy Stoloff The Partnership Foundation Jonathan L. Walker Watson Trust at the East Bay Community Foundation Dawn and Steven Willoughby \$15,000 - \$24,999 Clay and Ricki Akiwenzie Lucy Almers and Sean Rhea Joseph Y. Amram Anonymous (9) Carol Bieri and Joel Sanders Susan M. Boyers Lionel and Lorraine Chan Jim Chanin and Rachel Richman Gavin Chen and Camille Metzinger Walter and Anne Clark Coleman Family Foundations Kimball and Kazumi Cranney James and Leslie Dearbaugh Gerald and Gail Eiselman Peter and Anne Esmonde Joel Fajans and Karen Zukor \$10,000 - \$14,999 Alderyn Fund at San Francisco Foundation Elizabeth and Robert Andersen Anonymous (27)	Allen Feldman The Flora Family Foundation Marjorie O. Follette Jennifer and Abe Friedman Stanley and Mary Friedman Peter and Elaine Geffen Jeffrey Goodby and Jan Deming Janet and Joseph Grodin Matthew and Ann Harren James and Cynthia Hebert Rosemary Jenckes Jerry and Jan Kennelly Arron and Yuliya Klein Lesbians For Good Barbara MacAuliffe Roy and Jeana Maute Thomas and Jill McCleary Juanita J. Melrose Robert & Catherine Miller Ann Mohler and William Moseley Marcia S. O'Kane Sheila Orloff Carl and Eric Peterson Pure Dana Fund Nonie B. Ramsay Robinson Family Fund Yassen and Biz Roussev The Rose Fund at The East Bay Community Foundation Rob and Eileen Ruby Philanthropic Fund of the Jewish Community Federation and Endowment Fund Douglas and Julie Rusch James and Barbara Rutherford Nicolas A. Sayavedra Matthew and Rachel Scholl Seevak Pearson Fund at The East Bay Community Foundation Rick Seiter and Riffi O'Brien Kikuyu U. Shaw Cynthia Shevel and Elaine Selo Hart F. Smith Kong-Meng Tan, MD and May Chen \$10,000 - \$14,999 Colleen Fong and Carl Stempel Marilyn W. Ford Ann C. Foster Fox Family Fund	David Arpi Don Atkinson Adams Lina Au Banks Family Foundation Michel Bertin Karen and Warren Bird Ryan and Annabelle Blackman Vickie Blakeslee and Clive Schlieve Jerry and Mary Ann Boddum Catherine I. Boggs The Breen Family Fund William and Emily Brizendine Bylo Chacon Charitable Fund at Schwab Phyllis Calechman John Canelake Robert J. Carr Richard and Tracey Cassard James Cavaliere III and Susan Cavaliere Alfonso and Lydia Chan Kevin Chang and Sabrina Chan Darren Check The Chow Family Charitable Fund Annie Chuang and Matt Beltramo The Cleaves and Mae Rhea Foundation Troy and Shannon Datcher Sharon Davidson Eugene De Juan Bonney De Long-Cotty M. Quinn Delaney and Wayne Jordan Donald and Susan Wilson Fund DuBose Family Foundation Sheila Duignan and Michael Wilkins Helen Duncan and F. Bowie Paterson James Barnstow and Susan Ensing Jacob and Louise Epstein Robert Feldman, M.D. and Flora Peters Feldman Colleen Fong and Carl Stempel Marilyn W. Ford Ann C. Foster Fox Family Fund	Ellen Frankel and John Crossman The Futures Project Aaron T. Garnett Miriam Gersten Gohlke Elliott and Teresa Goodwin Faith Hall Jessica Hallett Drucilla D. Hamilton Robert and Linda Harris Jon and Connie Hartung Thomas and Mary Ann Hays Linda J. Headrick Paul Herzmark and Sheila McCormick Lisa R. Hirsch Jeffrey and Johanna Ilfeld Patrice Ingram Patsy Ishiyama Andree D. Jones Ben Keller and Helen Fitzmaurice Maureen A. Kennedy The Kenneth Rebecca Fund Erin Kinikin Lisa Kirkland Kurata Family Foundation at Fidelity Charitable James and Kathy Lee Lois Lemire Sally Ann Lewis The Lindsey Family Fund Louis and Anne Abrons Foundation, Inc Steve and Mary Jane Lowenthal Lorraine M. Lupo Dorothy Lurie David and Cecily Majerus Richard Marcus Nancy and Jack Marling The McEwan/Lane Fund at Morgan Stanley Michael McGuire and Cynthia Morton Suzanne and William McLean Mitchell and Lai-Ming Chan Meyer Susan Miller and Jonathan Davis John and Nadine Mills Marianne Mitosinka and George Wick Priscilla Myrick and Thomas Cutillo	Thomas Parenty and Yang Yang The Peterson Family Fund at East Bay Community Foundation Matt Peterson and Bob Bates William and Leslie Piels Eric and Yasuko Powell Judith Proller and Daniel Selleck Sean Quinlan and Karelle Celestin Rasmussen Family Fund Kenneth and Frances Reid Pamela Riley and Denis Collins Bonnie Magid Roditti and Fred Winik Jesse and Joan Rothstein Elaine Farge and Andy Rubini Joan Sarnat and David Hoffman Ken and Margie Sauer Edward and Liliane Schneider Garrett and Cheryl Schwab Mark and Kim Serpa Howard and Joyce Shao Susan M. Sherrerd Peter Sherris and Astrid Lacitis Emily Smith and Katherine Morris Marilyn and Leland Snider The Soghikian Family Foundation at Morgan Stanley Renata Sos and Judith Miles James Spencer Brian Stoler and Elizabeth Bisesi Jardina Inge Svoboda Jeffrey Sykes and Denise Martini Miye Takagi Lauren and T.S. Tate The Upjohn Fund of San Francisco Melissa Tidwell Ama J. Torrance Susan and David Tunnell John Walsh William and Denise Watkins Williams-Malone Foundation Winifred Y. Wood	Denise Yamamoto and Josh Hannah Michael Yoshikami \$5,000 - \$9,999 Dr. Henry Abrons and Dr. Li-Hsia Wang Ken Alex Denise Allen and Mark Hayes Allen H. & Selma W. Berkman Charitable Trust Aloha Ke Akua Ohana Trust Alexander and Maryann Amado Josy Amann Tim Stroshane and Jan Ambrosini Carole D. Anderson Jeffrey Angell and Joan King-Angell Anonymous (31) Judd and Tamar Antin Mukarram and Latha Attari Catherine Aydelotte John W. Bacon Gilbert Badilla Jeff and Ruth Bailey Suzan and John Bateson Lee and Cathleen Battles Joanna Beam The Beier Wright Philanthropy Fund at US Charitable Gift Trust Derek and Rachel Benham Gene Berdichevsky Chandrika and Alok Bhalla Shawn and Leigh Biega Dorothy and John Black Patricia A. Blackwell-Marchant Ricki Blau and William Reeves Anne Bolla Severin Borenstein and Margaret Stewart Ian and Andrea Boyd Christine Brigagliano and Morris Baller Ardra C. Brodale Kathryn Broughton and Mark Martin Donald and Marian Bruns Jim Bullock and Ralph Elder Steve and Alison Burke Lillian Cadenasso Greg and Carolyn Call
---	---	---	--	---	---	--

FINANCIAL CONTRIBUTORS (CONTINUED)

Peter Cardiello and Soyeon Kim	Geoffrey Foster and Nicole Jones	Ann L. Johnson	Sethurathinam Meenakshisundaram	Eric Reynolds and Emilio Seijo	Brett Stineman and Linda Larkin	Mohamed Ziauddin
Brandon and Anna Carr	Susan Fox	Everett and Kristin Johnson	Suzanne Mellard and Lon O'Neill	Kennedy and Kathleen Richardson	Arnold and Emily Stoper	Ami and David Zusman
Terry Carroll and Linda Dardarian	Kevin and Laura Francis	Marie Kalb	Joel Mesnikoff	Marie Riehle and Daniel Altemus	Nancy A. Storch	Olivier Zyngier
Neil Carvajal and Susan McDonough	Valerie Fraser	Ramesh and Shakira Karipineni	David Metz and Rachel Aberbach Metz	Ed G. Roach	Tracy and Joe Campisi	\$2,500 - \$4,999
Joanne F. Casey	Tarric and Remily El-Sayed	Naneen Karraker	The Meyer Family Fund at East Bay Community Foundation	Jason and Donna Roberts	Jill Suttie and Donald Arbitblit	Denise Abrams and David Harrington Fund
Sarah Chamberlain and Thomas Curtis	Bruce and Diane Friend	Katherine Hobbs and Lynn Marie Kessler	Linda and Tim Millar	Shannon Rogers and Rohan Kalbag	Manning Sutton and Hilary Goldman	Martin Abrams
Richard and Lucy Chen	Andrea Frome	Joan King	In memory of Dr. Alan Michael Miller, J.D.	Thomas J. Rothenberg	Evan and Debbie Adams	Evan and Debbie Adams
Jennifer Chiu	Mary Fuller and Katrina Kellogg	Tamara and Kenneth Kolda	Todd Mills and Kim-Dung Nguyen	Nancy Rothman and Lou Lavigne	Charles Addison	Cynthia and Tom Adkisson
Michael Choy and Shannon Moffett	Paul and Eleanor Gertmerian	Korsan Fund at Fidelity Charitable	Kenneth and Janice Milnes	Elizabeth Ruhland and Joshua Miele	Eugene and Ellen Switkes	Ronald Adler, M.D. and Patricia Adler
Ronald and Susan Choy	Katya and Joel Gerwein	Jacques and Marie Lagarde	Pam Moore	Nancy W. Ruskin	Helga Tarver	Richard and Carolyn Aguirre
Christopher Chua	Brian Godwin	Louise Lauferweiler, C.F.A. and Warren Sharp, Ph.D.	Randy Morse	Ruth Arnhold Endowment Fund at the East Bay Community Foundation	Teresa Tauchi and Sam Boonin	Ameena T. Ahmed
Jean M. Circiello	Brian Goldman and Zoe Palitz	Tom LeClair	Michael Moss	Samuel T. Test	Andrea Taylor	Karl R. Aitken
Charles W. Clay	Viola Gonzales and Penn Hughes	Carrie and John P. Lee	Carol and David Moyer	The Elder California Foundation	Ying Mei Tcheou and Jack Cunningham	Alice Akawie and Stuart Pivnick
Barbara Cohen	Lynn Greenberg and Michael Rothschild	Chris Lee and Scott Shaffer	Clifford Nakamoto, D.D.S. and Betty Nakamoto	The Lewis Greenwood Foundation	Samuel T. Test	Susan Albert and Bruce Maximov
Sandy Cohen	The Eric Grosse and Brenda Baker Donor Fund	Theresa Lee and Frederick Lass	Kim Nelson and Warren DeSouza	The O'Dea Family Charitable Fund	Janet and Eduardo Salinas	Jane and Vassilios Alexiadis
Robert and Ingrid Cole	Steve Hallock	Christina Legg Greenberg and Brian Greenberg	Karyn and Jack Newman	Carol and Garret Thunen	Nora Salvador	Julia and Jason Allen
Peter Coletto	W. James and Mary Ann Hannon	Stephanie Leider	Matt Nielson and Yao Liow	The Honorable Jon Tigar and Caroline Avery	Ludwika Schein	Hope and Noah Alper
Christina Coll and Bashir Agah	Thomas Hargrave	Brenda I. Lesh	Christine Noma and Stephen Fong	Tim and Peggy Toppin	Norma J. Schmitz	The Altman 2011 Charitable Lead Annuity Trust
Chip and Rebecca Conradi	Maya Harris and Tony West	Peter Lester and Ann Ludwig	Jonathan Schorr	James Trager and Angela Hwang	Mary Schoen and Carlos Perez	Alejandro Alzugaray
Scott and Valerie Corvin	Ruth Hartman and Gary Wolff	Monica Lewis and Charlie Hogg	Sarah Schuppisser and Michael Bull	Chiaki Treynor	Jonathon Schorr	Denise Anderegg and Martin Leima
Christina Crowley and Peter Hobe	Jamin W. Hawks	Marcus Libkind	The Schwab Family Fund at East Bay Community Foundation	The Lynn and Kent Trust	Sarah Schuppisser and Michael Bull	James Anderson, D.D.S. and Carol Grimm, D.D.S.
Michele Cucullu	William Heil	Suzanne Lilienthal and David Roe	Cecile and Chris Seams	James V. Tyler	Michael and Ann Parker	Richard and Carlene Anderson
Sophia Cui	Susanne Heim	Peter and Tami Linde	Peter Seibel and Lily Huang	Joan Uhler	Ellen J. Pelissero	Bret Andrews and Nancy Ragle
Rachel Cukierman	Joseph Hellerstein and Adene Sacks	Karen P. Long	Gordon Seligson	Carole Ungvasky and Christopher Killian	Maude Pervere and Samuel Miller	Anonymous (56)
Francesca Cunningham and Ann Harvey	Paul Hennessey and Susan Dague	Denise MacGregor-Franco and Jeffrey Franco	Arthur and Mary Jo Shartsis	Bernhard H. Van Lengerich	Morgan Pike and Lori Pettegrew	The Ansel Family Fund
Leonard and Margaret De Somma	Glen and Mary Hentges	Barbara Malina	Joshua Sherfield	Joseph Victor	Seemon and Natalie Pines	Marcia and George Argyris
David DeJong	Ben Hewlett	Patrick Marks and Amanda Schapel	Julia Sherwin and Michael Haddad	Rae Victor	Linda Polse and Janice Corran	Christi Americh
Barbara F. Dengler	Jacqueline Hindawi	Julius Marshall	Eric and Susan Poncelet	Jon and Margaret Sigurdson	Jon and Margaret Sigurdson	Mary Arnold
The Doctor Family	Steven Hogge	James Marsters Jr. and Laura Cheever	Franklin and Elizabeth Silver	Ward and Florence Simon	Ward and Florence Simon	Aditya Arora
Kathleen and Eamonn Dolan	Suzanne Holloway	Thomas Matson	Beecher Foundation	Jacqueline Smalley	Beecher Foundation	Lee Aurich and Helen Hutchison
Richard Masterson and Debra Dove	Laura Holmes and Tyler Odean	Timothy and Camilla McCalmont	Karen and Lawrence Queen	Cherida C. Smith	Katherine G. Welch	Renata Bachelor
Barry and Dori Dubin	Jessica Horowitz and Jeff Wang	Bruce McCarthy and James Macksood	Richard J. Raffanti	Marci L. Smith	Thomas Werges	Ronald and Suzanne Bachman
Angeline and Kurt Edsinger	Gayl Huston and Ralph Pais	E. Thomas and Mary McCarthy	Alan Rager and Shayda Haghgoo	Mary A. Smith	Elizabeth Werter and Henry Trevor	Gabriel Balazs and Lori Souza
Entrekin Foundation	The Frederick J. Isaac	David McClain & Merilyn Wong Fund	Craig Ragg	Lawrence Smyth Jr. and Phillipa Smyth	Patti White and John Sander	Paul and Dana Banchemo
Paul Epstein and Jennifer Traub	Philanthropic Fund of the Jewish Community Federation and Endowment Fund	Bernadette McDonald	Krish and Padma Ramakrishnan	Martha E. Snider	Joseph and Arnette Whitehouse	Paul Banh and Ka Wai Wong
James and Sandra Farrell	Isaac Rose Fund	Rick and Carolyn McFarland	Marc Ramirez	Shelby and Vicki Solomon	Laura Woo	Hanna Bankier
Joe and Tamar Fendel	Ellen A. Jacobs	Christopher McKenzie and Manuela Albuquerque	Philip and Carla Reed	Jacqueline and Chris Sommers	Crystal Woodford and Colin Dentel-Post	Sandy Barbour
Sheralyn Fields	Zachary and Sarah Jarvis	Nick and Liza Mealy	Chuck and Krista Reinhard	Carla Soracco	Karen and Burt Yarkin	Debbie and Daniel Bardon
Michael and Margi Fin	William and Shu-Hui Jeng	Jay and Elizabeth Mechling	Linda Rendle	Stephen Sperber and Roberta Silverstein	Gleb Yushin	Jane Bark
Claude Fischer and Ann Swidler	Miriam John					Alisa A. Barnes
Benjamin Fisher Sr. and Margaret Fisher						Susan F. Barquist
David Fleck						
Brigitte and Louis Fisher						
Erin Flynn and Chloe Atkins						

FINANCIAL CONTRIBUTORS (CONTINUED)

Teri Barr and Charles Stewart	Kathleen J. Carrai	Wayne and Diane Diamond and Family	Sean Fottrell and Penny Tse Fottrell	Garrett Gruener and Amy Slater	Eric Huppert	Henry Kingdon and Jodi Kremiller Kingdon
Annie Barrows and Jeffrey Goldstein	Maureen L. Cassingham	Connie Dias and Donald Parkin	Dana Fox and Paul Langlie	Jeff Gutkin and Helene Blatter	Olivia and Thacher Hurd	Tracy Kirkpatrick and Randy Rogers
Andrew Beahrs	Kara M. Caven	Michael Charlson and Susan Austin	Kathryn Frank and James Blume	Lance and Katherine Gyorfi	Robert and Jean Huston	Patricia E. Klahn
Becker Family	Lydia and Kashif Chaudhry	Michael Di Filippo and Beth Fein	Charles Freiberg and Andrea Alfano	Joanne Hagopian and John Eknoian	RJ Hutton Charitable Trust	Shelley Klop and Robin Packel
Philanthropic Fund	Kenneth Cheitlin and Betsey Keeler Cheitlin	Amy and Lawrence Donovan	Elizabeth Frey	Thomas Halbach	Zach and Ann Hutton	Eric and Angela Korpela
Mike Behnam	Fu-Tung Cheng	Helen and David Dornbusch	Ilona Frieden and Mark Jacobson	Karen Ivy and James Ringland	John and Christine Ireland	Ernest M. Kotlier
Zachary Beile	Whitney and Brett Christopoulos	Mary Ann and Milton Downer	Christopher Fry and Kim Harley	Lisa and Kenny Jackson	Justine and Oren Jacob and Family	Alan Kraut
Martin and Ronna Benjamin	Ann Claesgens	Kathleen Doyle	David Fry and Whitney Morris	Kerry Hamill and Roland Katz	David and Patricia Jacobson	Annis and Nicholas Kukulan
Paul Bennett	Seena Clark	Jennifer and Kyle Dyck	Patricia Fuzesy and Jonathan Krueger	Heather Hanly and Daniel Purcell	Nell Jenkins and Scott Troyer	Ram Kumar
James Benson	Michelle and Mark Claudnic	Holly L. Earl	Bill Gagen, Jr. and Marianne Gagen	Erica Hansen	David and Patricia Jacobson	Tiplada Kunakemakorn
Kimberly Benson	Mary Clemency	Bruce W. Ede	Chris J. Gaither	Marcella and Stephen Hardy	Nell Jenkins and Scott Troyer	Ellen Lake and William Hoerger
Noah and Cachet Berger	Debra Coggins and John Kikuchi	Egan Family Charitable Fund	Carolyn Gee and William Heyward	Alan Harper, Ph.D. and Carol Baird, Ph.D.	Margaret A. Jennings	Patrick S. Lane
Jodie Berger	Danielle and Rufus Coleman	John Ehrlich	Hal and Pat Gelb	Douglas and Anne Jensen	Douglas and Anne Jensen	Steven Lanzisera
Sandra and Geoff Berggren	Robert and Jessica Collett	David and Karen Eichler	Clara Gerdes and Ken Greenberg	Rosalie G. Jing	Carole Joffe and Fred Block	Richard and Joyce Lashof
Arthur S. Berliner	Jesse Collins	David Eifler and Rachel Morello-Frosch	C.R. Gibb	Andrew and Carol Hatcher	Andrea Johnson	Amy Lau
Wray Berrett	Paul Collins	Robin Einhorn	Richard and Sandra Gilbert	Jennifer Hayward Bramhall	Michael Johnson and Elizabeth Glenewinkel	Patricia W. Lau
Travis and Stephanie Bethune	Mikal Condon and Michael Ng	Michael and Molly Eiseman	Family Fund at the East Bay Community Foundation	James Hendriksen and Terisa Chaw	David and Phyllis Johnston	Gabriela Laz
Lisa Biggers	Jane and Steve Conn	Stacie and Kenny Epsman	Erik Gilling	Eugene and Barbara Henry	Irene M. Jones	Daniel and Laura Leaverton
Paul Bixby and Karen Smalley Bixby	Sam Conner	Lisa W. Esherick	John Henry	Joanne Jones	Thomas Jones III and Elisabeth Jones	Mary K. LeBlanc
Sandra Blair and Carol Cohen	Douglas Cooper	Jacqueline Espinoza	Rosemary Henze and Joseph Grieco	Thomas Jones III and Elisabeth Jones	Yatish Joshi	Caron Lee
Lisa and Nigel Blampied	Margaret Corrigan	Ryan and Kirsten Ettl	Ed Herbert and May Fung	Eliot and Philippa Jubelirer	Ben Hermalin and Ruth Konoff	Gorton Lee and Janice Chin
Hadley and Mary Anne Bland	John H. Cortesi	Anne B. Evans	Ben Hermalin and Ruth Konoff	Sam and Patricia Juliano	Cecile and Emmanuel Hernandez	Janis Kahn and Jeffrey Greve
Ann Blessing and Eric Eschen	Joseph and Sandra Costa	Gregory and Charlotte Evans	Cecile and Emmanuel Hernandez	Janis Kahn and Jeffrey Greve	Ed Herbert and May Fung	Rosie and Scott Kane
Michael and Anna Bliss	Carol Counts	Alan Crockett and Gail Grigsby	Lisa Herrinton and Stuart Ozer	Daniel Kane, Jr. and Silvia Sorell	Ben Hermalin and Ruth Konoff	Lisa Herrinton and Stuart Ozer
Shawnda and Rafael Bolon	Chris and Lynn Crook	Chris and Lynn Crook	Lorie Hickerson	Ward and LeAnn Kanowsky	Robert Fabry and Susan Taylor	Anthony and Judith Hitchings
Stephen Bomse and Edie Silber	James Crook Jr. and David Harbison	James Crook Jr. and David Harbison	Richard and Janet Gless	Jane Kaplan and Donatello Bonato	Fairclough Family Fund	Larry Hobel and Diana Staring
Frederick Booker and Blythe Mickelson	Mary and William Cucci	Mary and William Cucci	Susan Goldstein and Andy Kivel	The Kaplan Family	Pelly Fan	Wendy Hoben and Lydia Huang
Bernard R. Boudreaux	Alex Dahlen	Alex Dahlen	Nancy Goler and Kelley Berg	Katherine Kasameyer and Sarah Roberts	Paul and Colleen Farrell	Alan Hobesh and Kerry McLean
Linda Braly and Kevin Wilson	Elizabeth Dalrymple and John Kelson	Elizabeth Dalrymple and John Kelson	Jon and Mio Good	Harold and Joan Lewis	Michael and Maria Fein	William C. Hogan
Lisa Braver Moss and Mark Moss	Chris and Karen Dalton	Chris and Karen Dalton	Cynthia Gorney Sokol and William Sokol	The Lewis Family	Julia Feldman-Decoudreaux and David Burge	Helen Holmlund
Nancy L. Breslin	Joshua and Mary Bright	Joshua and Mary Bright	Gottbehuet Reiner Fund	Moses Libitzky and Susan Solomon-Libitzky	Mary and Sidney Ferguson	Kara Holzwarth
Joshua and Mary Bright	Rob and Marcea Brimmer	Rob and Marcea Brimmer	Deborah L. Gould	Igor Liskovets and Bianca Ling	David Finger and Sylvia Wikler-Finger	Jeffrey and Judy Greenhouse
Tina Broder	Heather Brown	Heather Brown	Leah and Logan Granger	Eric Lloyd	Michael and Barbara Hoversen	Richard and Jeana Hopper
Jimmie Brown	Nicole Brown-Graham and Ardis Graham	Nicole Brown-Graham and Ardis Graham	Ellen Greenberg and Duncan Watry	Ellie and McClure Kelly	Michael and Barbara Hoversen	Frances Houle and William Hinsberg
Ruth Decker	Ruth Decker	Ruth Decker	Jeffrey and Judy Greenhouse	Kathleen Kelly	Michael and Barbara Hoversen	Michael and Barbara Hoversen
Scott Denman	Elissa J. Dennis	Elissa J. Dennis	Gordon Greenwood	Craig Kelso and Judith Roth Kelso	Michael and Barbara Hoversen	Michael and Barbara Hoversen
Kathryn Dernham	Pamela Dernham and Gregory Linden	Pamela Dernham and Gregory Linden	Julie B. Griffith	Michael Kent and Rebecca Rozen	Michael and Barbara Hoversen	Michael and Barbara Hoversen
Carla Buffington	Moti Bycel and Danielle Davidson	Moti Bycel and Danielle Davidson	Thomas and Gretchen Griswold	Anthony Kesich	Michael and Barbara Hoversen	Michael and Barbara Hoversen
Barbara B. Caine	Nicholas and Nancy Kathryn deVries	Nicholas and Nancy Kathryn deVries	Andrea Gross and Steve Herz	Frank and Rosaline Kiang	Michael and Barbara Hoversen	Michael and Barbara Hoversen
Clay Campaigne	Jaspal and Reetinder Dhillon	Jaspal and Reetinder Dhillon	Melanie Grosscheider-Monkowski and Adam Monkowski	Allen and Hannah King	Michael and Barbara Hoversen	Michael and Barbara Hoversen
Steven Campbell	Jack L. Fong	Jack L. Fong	Robert K. Grossman		Michael and Barbara Hoversen	Michael and Barbara Hoversen
The Campbell Family Fund	Doris J. Foster	Doris J. Foster			Michael and Barbara Hoversen	Michael and Barbara Hoversen

LEGACY GIFTS

*The Food Bank is truly grateful to those who have pledged support for the future of our mission through a legacy gift. The following generous individuals have joined our **Will to End Hunger** legacy society by committing to fuel our efforts for generations to come.*

Charles and Christiana Macfarlane	Sharon A. Mullen	Kevin Prindiville	Curtis Scribner	Jeff and Jennifer Tarn	Catherine Whiteside and Peter Mikkelsen	Fredrick and Mary Wooster
Robert Mack and Bernadette Reiss	James and Lindsey Murray	Kathelijn and Jan Rabaey	Louise Sefton and Arlyn Johns	Carolyn Tawasha and James Baldocchi	Edwin and Ellen Whitman	Eric and Deborah Woychik
Nicole Maguire and Nate Byron	John and Barbara Nagle	Nicholas and Star Rabinowitz	Peter Seidl and Karen Katz	Jennifer Taylor and Phillip Trujillo	Amy and Kirby Wilcox	Bobby Yearby Jr. and Robin Yearby
Laura Mahanes and Steven Weissman	David Nakamura	Henry Ralston and Patricia Litton	Joseph V Selby	Ruthann and Carol Taylor	Claudia Williams	June and Thomas Yee
Anna and Alex Makler	Laurie Nash	Michael and Susan Rancer	Martha Sellers and Luigi Semenzato	Tiffany and Jerreau Taylor	Crystal Williams	Derek and Jill Yegian
Laura N. Malik	Wally Naylor	Victor Rauch and Ingrid Madsen	Stephen Senter and Deborah Hurst Senter	Michelle Taymuree	Sean C. Williamson	Olujimi Yoloye and Sharon Anderson-Yoloye
Thomas Malone and Katrina Shelton-Malone	Robin and James Nebel	Richard Raushenbush and Barbara Giuffre	Emily Sexton	Cora M. Tellez	Bobbie and John Wilson	Aaron S. Young
Marc Manason	Melissa Nelken and Ronald Lee	James M. Redovian	Andrea and Neal Shabashov	Deirdre A. Terry	Karlene Wilson	Robert Youngs and Susan Cohen
Steven Mandelberg	Nepheli Foundation	Mark E. Reilly	Marjorie Shapiro and Ian Hinchliffe	Elizabeth Thagard	Edward and Hazel Winslow	Charles and Jane Zaloudek
Judith Margulis Ph.D. and Jeffrey Kessel	Ron Nestor	Renewal by Andersen	Amalia Shedro	Jill M. Thayer	Jacqueline Wnukowski	Steve Zieff and R. Elaine Leitner
R. Thomas Martell	Mark Nevins and Joyce Pardo Nevins	Ronald and Mary Rettig-Zucchi	Deborah S. Shefler	Brady Thomas	Judith H. Wofsy	
Lillian Martin	Karl Nichols and Sherry Hu-Nichols	Edward M. Reyes	Aamir Sheikh	Matthew Thomas	John and Lisa Wall	
Margaret L. Mathias	Anna Nomura and Josh McKeever	James and Ruth Reynolds	Cynthia Shen	Robert B. Thompson	Charles Wollenberg	
Laura D. Mattos	Colleen Noonan	Kim and Steve Richardson	William and Judith Sherry	TIAA Charitable	Nicole Wong and Edward Dua	
Elizabeth McClellan	Marianne O'Connell	Nicholas Riegels and Nardine Saad-Riegels	Makiko Shinoda	Patricia Tokunaga and Jeffrey Moad	John Woo	
Mara McClellan	Ann M. O'Connor	Trygve Ristroph	Patrick and Betty Shinoda	Robert and Judith Toll	Jennifer Woolf and James McCarrick	
Charles and Carol McCullough	Richard O'Donnell	George and JoAnne Robb	Sara Snider	Oleg A. Tomashevsky		
Ray and Stephanie McFadden	Nicole Offerdahl	Richard and Nancy Robbins	Greg and Susan Sickal	Robert Townsend		
Kathleen McGovern and Michael Daly	Claire Oldani	Nancy J. Roche	Jonathan and Sarah Simon	Tom and Mindy Trinh		
John and Karen McGuinn	Dina Older Aguilar and Samuel Libow	Amnon and Katie Rodan	Gurmeet Singh and Gurjit Kaur	Charles K. Tuomainen		
Robert and Marilyn McKenzie	Kristina Omari	Peter Roeper and Martha Harnly	Maureen Sirhall and Richard Rogers	Alana Turner		
Charles McKinley and Martha Schaffer	Barbara O'Neal and Patrick Alvarez	Heli Roiha and Terry McKelvey	Gail L. Skoff	John Turner and Allison Pratt		
Bruce and Barbara McLeod	David and Mary O'Neill	Ursula Rolfe and Monroe Strickberger	Mark Sloan	Michael Ubell and Paula Hawthorn		
Thomas McMahon	The Sally Outis Memorial Fund	Elaine Rosenthal	Nancy Smith	Lin Ure Cheyer and Adam Cheyer		
Kathleen Meagher and Harvey Sohnen	Bruce and Merry Owen	Martin Rosenthal and Patricia James	Owen and Erma Smith	Melinda and Vahid Vahedi		
Vijay Mehrotra and Jennifer Black	Anthony and Christine Pagano	Lynne Royer and Bruce Saldinger	Sylvia Smith and Stanley Kowalski	Mary Ann Valdez		
Vasanti Mehta	Ronda C. Park	Peter Rukin and Sharon Djemal	Laurie A. Soman	Andrew And Kathleen Varlow		
Bryce Mendelsohn	Catherine Parkin and Maurice Mitchell	Teresa D. Russett	Scott and Ruth Spear	Brian and Barbara Vaughn		
Theresa and Mary Mendoza	Clarence and Nancy Parkison	Joanne and Howard Ruud	Robert and Ann Spears	Eliza Veronda		
Molly Mentzer	Manjulaben Patel	Francis Ryan and Judith Levitan	Beth A. Spease	Joy Villafranca and Scott Wikstrom		
Daniel Miller	Steven and Cherie Jo Patenaude	Jean Ryan	Sarah Stadler and Zach Cowan	Luke Wachter		
Larry Miller and Mary Kelly	Jeffrey Pector and Shelley Coppock	Thomas Sager and Eugenie Scott	Matthew Steele	Joan and Jon Wactor		
Gregory and Patricia Mintz	Peter Pervere and Georgia Cassel	Gunnar E. Salumaa	Philip and Jean Stein	Harvey and Leslie Wagner		
Witt Monts and Lily Shih	Ethan Petersen and Carmalyn Lubawy	Lauren Salvo	Mary E. Stephens	Carol A. Walb		
Carmen J. Moore Charitable Trust	Chad Peterson	Anjali Samani	Enda and Philip Sterne	Germaine LaBerge		
John and Janet Moore	Caroline and Craig Peterson	Devin Sandoz and Lisa Fotheringham	Joel and Ellen Stettner	Gail Wallace and Francois Korn		
G. Robert Morris and Carole Lowenberg	John and Sharon Piekarski	Carol Savio	Michele Stillwell-Parvensky and Ryan Tierney	Thomas and Winifred Walters		
Jeffrey and Simona Morris	Yuliy Pisetsky	William and Susan Scalice	Beth Strachan and Dan Neuschafer	Shally Wang		
Kris Morrow	William J. Pitz	George Scharffenberger	Rune Stromsness	Eric W. Wasiolek		
Moses Family Charitable Fund	Dorothy Ponton and Erik Scheelke	Peter Scheibel	John and Donna Strugar-Fritsch	Peter and Michelle Weeks		
Andrew and Mary Moyce	Claire Potstada	Steven Schiller and Kristine Kaiser	Rigel Stuhmiller	Anne Weills and Daniel Siegel		
James and Margaret Moyers	Warren and Jane Pottebaum	Susan Schwartz	Maxim Sulimov	Timothy Wendt and Mary Solecki		
		Mark and Susan Schnert	The Honorable John Sutter and Elouise Sutter	Bonnie and Scott Wentworth		
			Odessa Sutton	Charles and Annelle Westbrook		
			Nancy S. Sweetland	Brett A. White		
			Max and Barbara Tabak			

VIRTUAL FOOD DRIVE

The Food Bank appreciates donations of any amount. Due to space limitations, only the top 25 virtual drives are listed.

C510 East Bay Dirt Classic
4D Molecular Therapeutics
Alameda County
Albany Responds Covid-19
Alta Bates Summit Medical Center
Compass Real Estate-Easy Bay
Cornerstone Sf 24 Hour Challenge
Cub Scout Pack 1015
e.l.f. Cosmetics
Edison Elementary
Five9 Women in Tech San Ramon
Kaiser Permanente Division of Research
Keller Williams Alameda, Castro Valley, Oakland
Lam Research
Lennon's Virtual Food Drive
Mark's 50th Challenge
Molecular Foundry At Berkeley Lab
Palo Alto Alumni Kappa Alpha Psi
Piedmont High School
PUSD Elementary Schools
Quiring General, LLC
Revance Therapeutics, Inc
Simpson Strong- The Home Office
Softbank Group
Wilson Sonsini- EBCE Fundraising Drive

VIRTUAL FOOD DRIVE

The Food Bank appreciates donations of any amount. Due to space limitations, only the top 25 virtual drives are listed.

General / Year Round Drives	School
Berkeley Bowl	Quarry Lane School, Tassajara Road
Castro Valley Library	Stratford School, Osgood Rd.
Alameda County, Public Works	Castro Valley High School
Meeta Yyas	Lea's Christian School
Dublin Library	Stratford School, Pleasanton
Cape and Cowl Comics	St. Mary's College High School
Fremont Main Library	California School for the Deaf
Alameda County, Information Technology Department	St. Leander School
Alameda County, SSA Enterprise Office	Albany High School
	Dougherty Elementary School

High Holy Days

	Summer
Temple Sinai	
Temple Beth Abraham	Alameda County Fair
Kehilla Community Synagogue	Food Drive Day
Congregation Beth El	Workday
Congregation Netivot Shalom	USDA FSIS OFO
Temple Beth Torah	Social Security
Temple Beth Shalom	Administration, San Leandro
Chochmat HaLev	Social Security Administration, Hayward

Holiday

Office Depot	Mukerjee Annual Food Drive
Remaxx Accord, Castro Valley	Social Security Administration, Fremont
ACE USA/ESIS Inc.	Oakland Acupuncture Project
East Bay BMW	
Martin Luther King Jr. Middle School	
Gene's Fine Foods	
San Lorenzo Japanese Christian Church	
United Brokers Real Estate	
Lam Research	
Grace Bible Church	

Note: Due to the COVID-19 pandemic, there is no data for the LETTER CARRIERS FOOD DRIVE or LENTEN FOOD DRIVE

School

Quarry Lane School,
Tassajara Road
Stratford School,
Osgood Rd.
Castro Valley High
School
Lea's Christian School
Stratford School,
Pleasanton
St. Mary's College High
School
California School for
the Deaf
St. Leander School
Albany High School
Dougherty Elementary
School

Summer

Alameda County Fair	EAT Club
Food Drive Day	Food Finders
Workday	Foods Co - Store #534
USDA FSIS OFO	Forager Project LLC
Social Security	Fra' Mani Handcrafted
Administration, San	Meats (Fra' Mani Salumi)
Leandro	Geopak Naturally LLC
Social Security	Girl Scouts Of NorCal
Administration,	Greenleaf
Hayward	Grocery Outlet - Home
Crunch	Office
Fortune Builders	Harvest Food Products
Mukerjee Annual Food	Co., Inc
Drive	Hello Fresh
Social Security	Hendrick Automotive
Administration,	Group
Fremont	Impossible Foods Inc.
Oakland Acupuncture	Joel & Patty Weinstein
Project	

Mi Rancho Tortilla Factory
Newport Meat Northern CA
Nona Lim
Organic Spices Inc.
OXIGEN Beverages USA
Inc.
Pathwater
Peet's Coffee & Tea
Performance Foodservice
Petit Pot
Pitco Foods
Premier Nutrition
Corporation
Progeny Coffee LLC
Purity Organic
RALEYS
Render Foods LLC
Revolution Foods
Safeway Inc.
Safeway Milk Plant
Salesforce
Savory Creations
Seaside Refrigerated
Transport
Semifreddi's Bakery
Social Good Fund 501c3
(AKA: Give With Lily)
Southwest Airlines
Sugar Bowl Bakery
Sukhi's Gourmet Indian
Foods
Suzimix Inc.
Sysco Corporation
The Church Of Jesus Christ
Of Latter-Day Saints
Triunfo Foods
U.S. Foodservice Inc.
U.S. Trading Co.
Vicolo Wholesale
Vistar/VSA (Multi-Foods)
Whole Foods Market
(Distribution Center)
World's Best Cheeses
West Inc.

Wayne Ainsworth and
Elizabeth Yagle
Roger Anderson and
Joanne Lombardi
Jeffrey Angell and Joan
King-Angell
Lee Aurich and Helen Hutchison
Dan Barki
Anna C. Barnard and
Belinda Stradley
Suzan and John Bateson
Anne and Michael Becker
Toby C. Berger
Gloria L. Bowles
Gretchen B. Brosius
Donald E. Buchholz
Trent Byle and Andrea Robinson
Phyllis Calechman
Alfred and Sharon Camisa
Sharyn Carroll
Harry Chomsky and Amy Apel
Susan F. Ciriclio
Sally E. Clausen
Robin D. Compton
Margaret Cornwall
Florence Culp
Anne Curran
Barbara Darrow-Blake and
Steve Blake
Deena Davis and Mordechai Olcha
Yetta and Thomas DeHart
Valerie Doyle
Elena D. Duplessis
Natalie S. Elkind
Anjali Englund
Dana Fox
Joan Gorrell
Chia W. Hamilton
Aileen Herrmann
Leigh Illion
Shirley A. Jewell
Robert Kaiser and Lois Snow
Bridget Keenan
David P. Kramer
Mae O. Liu
Donald L. Mack
Vicki Martinson
Mary and Keith McAllister
Robert McCarrick
Scott and Ingrid Mealer
Stephen and Emily Mendel
Gregory and Patricia Mintz

Ted and Jacqueline Monk
Norma M. Mosley-Lampley
Richard and Carrie Motamedi
Clifford Nakamoto, D.D.S. and
Betty Nakamoto
Marianne Noland
Nancy J. Novick
Antonio and Amparo Ozuna, Jr.
Rick Patterson
Gladys Perez-Mendez
Elizabeth Pigford
Jeanette Marie Pontacq
Virginia S. Preston
Bernadette Raftery
Michael and Susan Rancer
Wayne A. Rebiejo
James and Ruth Reynolds
Elizabeth Rinehart
Barbara Ritz
Abelardo Rosas
Sandra Rosenberg
P. K. Rountree
Allen A. Rusk
Marguerite A. Ryan
Roussel Sargent
Beth and David Sawi
Dan Scarola
Leonard Schwab and Rita Brenne
Paulette Setzer and William
Whitehead
Narayandas Shah
Andrea Shabashob
Patrice and David Shulik
Susan Simpson and Steve Crimi
Maureen Sirhal and Richard
Rogers
Nicole Slaughter
Teresa Sloop
Toshi T. Suzuki
Ying Mei Tcheou and
Jack Cunningham
Sharon Toth
Marlene Vogelsang
Keith and Andrea Vinson
Watson Trust at the East Bay
Community Foundation
Kim Wayne
C. Searle Whitney
Dawn and Steven Willoughby
Nance Wilson and Clifton Schor
Jurek and Dain Zarzycki
Ami and David Zusman

If you have named ACCFB in your estate plans and have not yet informed us, or if you are interested in learning about legacy gifts and our **Will to End Hunger** legacy society, please contact Anjali Englund, Major Gifts Officer, at 1-510-875-7845.

**94% of all donations goes
directly to our programs**
(includes in-kind donations)

THANK YOU TO OUR COVID-19 EMERGENCY RESPONSE PARTNERS

Alameda County
Alameda County Fairgrounds
Alameda County Public Health Department
Alameda County Sheriff
Alameda Unified
Albany Unified
Amazon
Berkeley Unified
California Conservation Corps
California State Guard
Castro Valley Unified
Chabot College
City of Hayward
City of Oakland
City of San Leandro
Civicorps
Civil Air Patrol
Emeryville Unified
Fremont Unified

Hayward Unified
Livermore Unified
Lyft
New Haven Unified
Oakland Unified
Oaklandish
Pleasanton Unified
Prologis
Raymond Handling Concepts Corporation
San Leandro Unified
San Lorenzo Unified
Task Rabbit
The Red Cross
TriCity Volunteers
Uber
Union City Unified
Wells Fargo

FOOD RECOVERY PROGRAM DONORS

The Food Bank greatly appreciates all food donations. Due to space limitations, only donations of 5,000 pounds or more are listed.

Arizmendi Bakery
Berkeley Natural Grocery
Big Lots!
Byte Foods
Smart FoodService
Costco
Crafty Delivers
Food Maxx
Foods Co.
Jetro Cash & Carry
Lucky

Raley's
Safeway
Smart & Final
Sprouts Farmers Market
Target
A Taste of Denmark
Thistle
Trader Joe's
Walmart
Whole Foods

IN-KIND DONORS

Beijing One Heart Sphere Charity Foundation
Marcy and Jef Billetter
Buddhist Tzu Chi Foundation
Julia G. Burch
California Association of Food Banks
Cholita Linda
Congregation Beth Emek
Consulate General of the People's Republic of China in San Francisco
Andrew Cramer
DHR Investment Counsel, Inc
Diablo Publications
Ruth Foresler
Gap Inc.
Girl Scouts of Northern California
Julie A. Hollinger
Shannon Lee-Rutherford and Damien Resch
Media Matters SF, LLC
MVP Visuals
OSIsoft
Pap  Material Handling
Peet's Coffee & Tea
Raymond Handling Concepts Corporation
Reyes Holdings
Roplast Industries
Serpico Landscaping, Inc.
Smart & Final #401
Spire Solutions
Sutter Oakland Cardiology
Sharon and Cimarron Taylor
TransPak
Mark Turgeon
Le Nguyen Vuong My and Michael Strauss
Workday Foundation

THANKS TO OUR LEADING CORPORATE PARTNERS





















For fourteen consecutive years, the Food Bank has been awarded Charity Navigator’s highest rating — Four Stars — ranking us among the **top 1 percent** of charities nationwide.



YOUR INVESTMENT IN OUR RESPONSE

Alameda County Community Food Bank — founded in 1985 — has a long history of supporting our community through disasters of all types.

COVID-19, however, presented a complex crisis unlike any we have ever faced: Arriving like a natural disaster – swiftly and powerfully, with little warning — and persisting like the worst of recessions, where many of us may never fully recover from the economic impact.

In the early months of the pandemic, unemployment in Alameda County increased 5-6 times and we estimate up to *half* of the County’s 1.67 million residents were at risk of hunger. As we move into FY21, one thing is clear: We will be serving an unprecedented need, resulting from the economic fallout of this crisis, for years to come.

Thanks to an incredible outpouring of community support at the pandemic’s outset, we ended FY20 with a budget surplus. The first few months of our response presented challenges — including food shortages, competition with grocers for key items, and partner agency closures — which caused our spending to trail fundraising. Once these challenges were overcome, our spending picked up considerably. Monthly food costs, alone, nearly tripled from April 2020 (the first full month of the pandemic) to July 2020, the first month of FY21. Costs had more than quadrupled by October.

The economic effects of COVID-19 will extend far beyond the health crisis. To meet still-rising demand, we expect to provide 53 million pounds

of food in FY21 — a 34 percent increase from FY20; and 64 percent more than the last full fiscal year before COVID. As donated food and government commodities are decreasing as a percent of our food procurement, we’re purchasing a much larger share. **For FY21, we estimate an additional \$1.5 million/month in expenses**, most of which are related to our response and recovery efforts.

The next emergency is both inevitable and unpredictable as to its timing and severity. As such, the ACCFB Board of Directors has designated a \$20 million reserve for Emergency Operations to ensure we are fully equipped to nourish the community during times of unexpected, significant, and protracted spikes in need.

Alameda County Community Food Bank is firmly committed to our value of Transparency. Our FY20 financial statements are available on the following page; complete, audited statements are available by request or by visiting www.accfb.org/financials.

Thank you for trusting us with this important work and joining us in the fight against hunger.



Amy Donovan
Chief Financial Officer

FINANCIAL STATEMENTS

Statement of Financial Position

(As of June 30, 2020)

ASSETS

Cash and marketable securities	33,542,743
Grants receivable	2,313,167
Promises to give	1,518,857
Program revenue & other receivables	92,818
Inventory (Note 1)	2,090,325
Prepaid expenses and deposits	290,200
Property and equipment, net	10,296,667
Total Assets	\$50,144,776

LIABILITIES AND NET ASSETS

Liabilities

Accounts payable	998,525
Accrued compensated absences	501,857
Deferred revenue	57,331
Loan payable	1,467,100
Total Liabilities	\$3,024,813

Net Assets

Unrestricted	1,000,000
Board-designated net assets	43,677,032
Donor restricted	2,442,931

Total Net Assets \$47,119,963

Total Liabilities and Net Assets \$50,144,776

CHANGE IN NET ASSETS

Change in net assets, operating (Note 2)	22,969,684
Unrealized loss on investments	(1,478)
Net donor restricted revenue	(699,902)
Net assets, beginning of year	24,851,659
Net assets, end of year	\$47,119,963

Note 1: Feeding America, the national food bank network, in FY20 valued donated food commodities at \$1.74 per pound and USDA food commodities at \$1.49 per pound.

Note 2: The Food Bank recognizes donated and USDA commodities as a contribution and resulting inventory. The increase in net assets is primarily due to increases in donations in response to the pandemic and is designated to cover costs associated with related increase in community need.

Hard copies of the annual audit are available upon request; digital copies can be accessed on the **About Us** menu of our website, accfb.org, under **Financials**. Every effort has been made to ensure the completeness and accuracy of the information contained in this report. Please contact our Development Department at 1-510-635-3663 ext. 336 with any corrections.

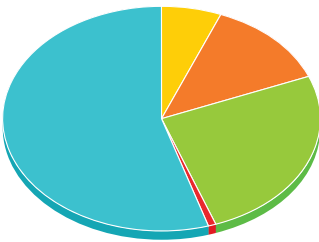
Statement of Operating Activities

(Year ended June 30, 2020)

ANNUAL SUPPORT AND REVENUE

Government revenue	6,255,474
Foundation and corporate giving	13,119,753
Individual contributions	25,521,954
Special events contributions	756,176
Program revenue	556,623
Interest and other	253,955
Donated commodities	56,262,344

Total Support and Revenue \$102,726,280



- Food donations 73%
- Government contracts 5%
- Grants 7%
- Cash contributions 14%
- Program and other 1%

ANNUAL OPERATING EXPENSES

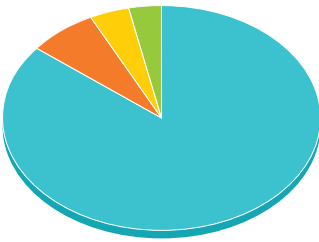
Program Services

Food distribution (Note 2)	68,301,586
Nutrition education, hunger education, community outreach, research, volunteer training	5,597,653

Supporting Services

Resource development/fundraising	3,214,699
Management and general	2,642,658

Total Expenses \$79,756,596



- Food distribution 86%
- Nutrition, hunger education, community outreach, research, volunteer training 7%
- Resource development/fundraising 4%
- Management and general 3%



ALAMEDA COUNTY
COMMUNITY
FOOD BANK

7900 Edgewater Drive, Oakland, CA 94621
1-510-635-3663 | accfb.org

MEMBER OF
FEEDING
AMERICA

